



Main Street
Cleator
Cumbria
CA23

Offers in Excess of £92,000

bettermove

Main Street Cleator

Bettermove are proud to present this 3 bedroom terraced house in Cleator, available with no forward chain.

The property benefits from double glazing, and gas central heating throughout, with on street parking available.

The council tax band is A.

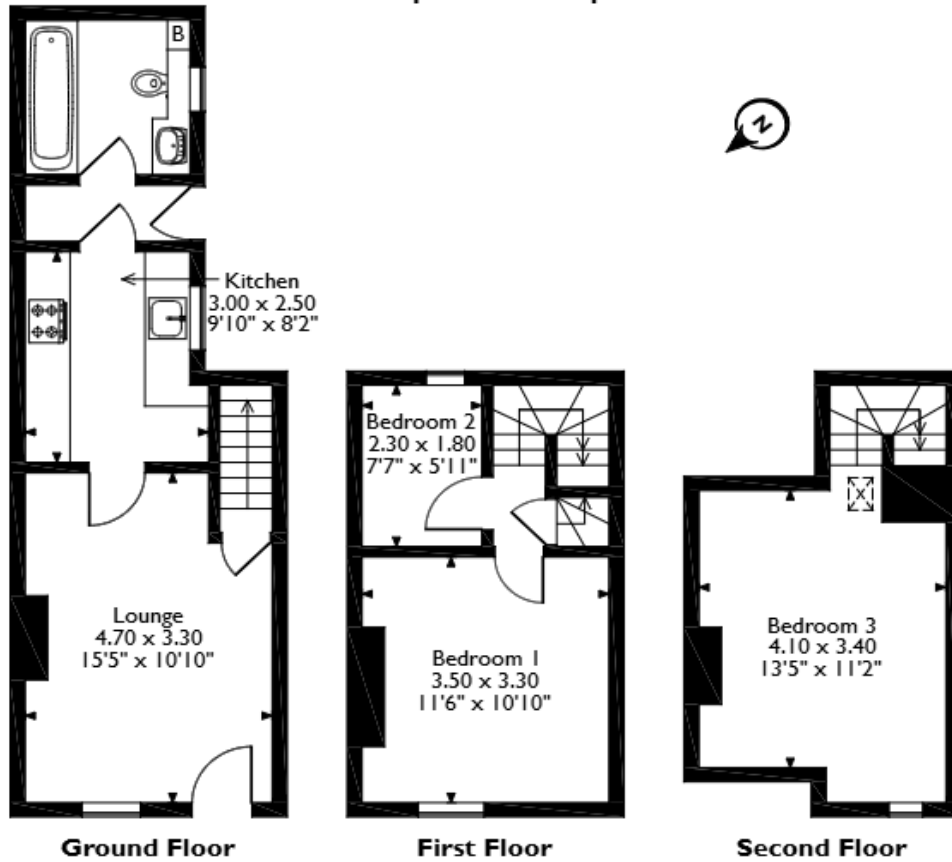
The interior of this beautifully presented property comprises a spacious living room, fitted kitchen, and family bathroom on the ground floor. The first floor consists of two bedrooms, including one double, and one single, with third bedroom located on the second floor. The exterior boasts a private rear garden, perfect for enjoying the summer months.

Located in the sought after of Cleator, the property is close to a range of amenities, including shops, supermarkets, restaurants and pubs. Excellent transport connections can be found from St Bees Train Station, a variety of local bus routes, and quick access to the A595.

This exciting opportunity should not be missed. All enquiries can be made through Bettermove.



Main Street, Cleator
Approximate Gross Internal Area
67 Sq M/721 Sq Ft



Ground Floor

First Floor

Second Floor

Please note that the location of doors, windows and other items are approximate and this floorplan is to be used for illustrative purposes only. Unauthorized reproduction is prohibited.



20-22 Bridge End, Leeds, LS1 4DJ
t: 0330 004 0050 e: hello@bettermove.co.uk
www.bettermove.co.uk