



**Consort Street
Mountain Ash
Mid Glamorgan
CF45**

Offers in Excess of £158,000

bettermove

Consort Street

Mountain Ash

Bettermove are proud to present this 3 bedroom semi-detached house in Mountain Ash.

The property benefits from double glazing, and gas central heating throughout, with on street parking available, as well as the garage.

The council tax band is B.

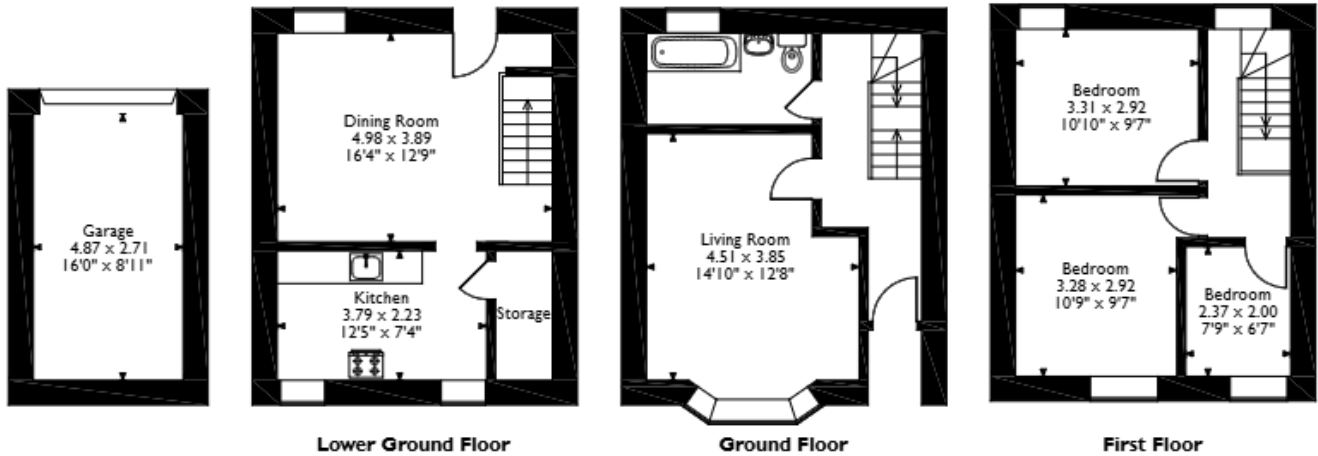
The interior of this beautifully presented property is situated across three floors, and comprises a dining room and fitted kitchen on the lower ground floor. The ground floor consists of a spacious living room, and the family bathroom, with the three bedrooms, including two doubles, and one single, located on the first floor. The exterior boasts a garage, ideal for additional storage, or car parking space, and a private rear garden, with both patio and lawn areas, and providing stunning views, perfect for enjoying the summer months.

Located in the popular town of Mountain Ash, the property is close to a range of amenities, including shops, supermarkets, restaurants and pubs. Excellent transport connections can be found from Mountain Ash Train Station, a variety of local bus routes, and quick access to the A470, leading to the M4, and central Cardiff.

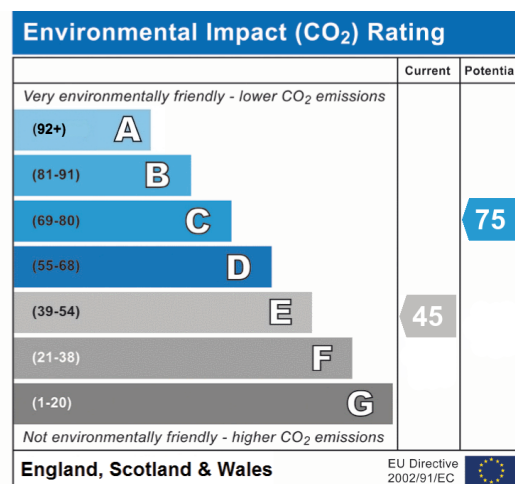
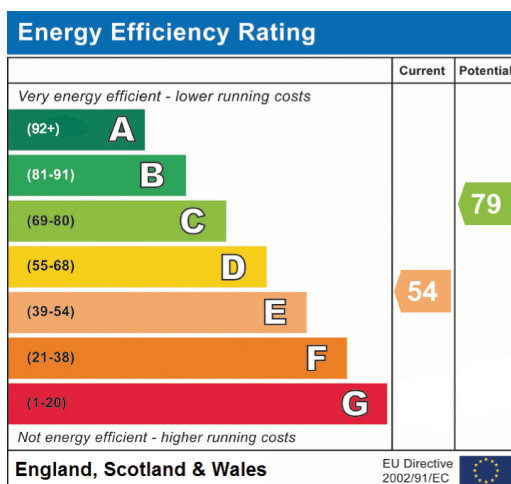
This exciting opportunity should not be missed. All enquiries can be made through Bettermove.



Consort Street, Mountain Ash
 Approximate Gross Internal Area
 Main House = 95 Sq M/1022 Sq Ft
 Garage = 13 Sq M/140 Sq Ft
 Total = 108 Sq M/1162 Sq Ft



Please note that the location of doors, windows and other items are approximate and this floorplan is to be used for illustrative purposes only. Unauthorized reproduction is prohibited.





20-22 Bridge End, Leeds, LS1 4DJ
t: 0330 004 0050 e: hello@bettermove.co.uk
www.bettermove.co.uk

Please Note: These particulars, whilst believed to be accurate are set out as a general outline only for guidance and do not constitute any part of an offer or contract. Intending purchasers should not rely on them as statements of representations of fact, but must satisfy themselves by inspection or otherwise as to their accuracy. No person in this firm's employment has the authority to make or give any representation or warranty in respect of the property.