



**Windmill Close  
Uttoxeter  
Staffordshire  
ST14 7NW**

**Offers in Excess of £386,000**

**bettermove**



# Windmill Close

## Uttoxeter

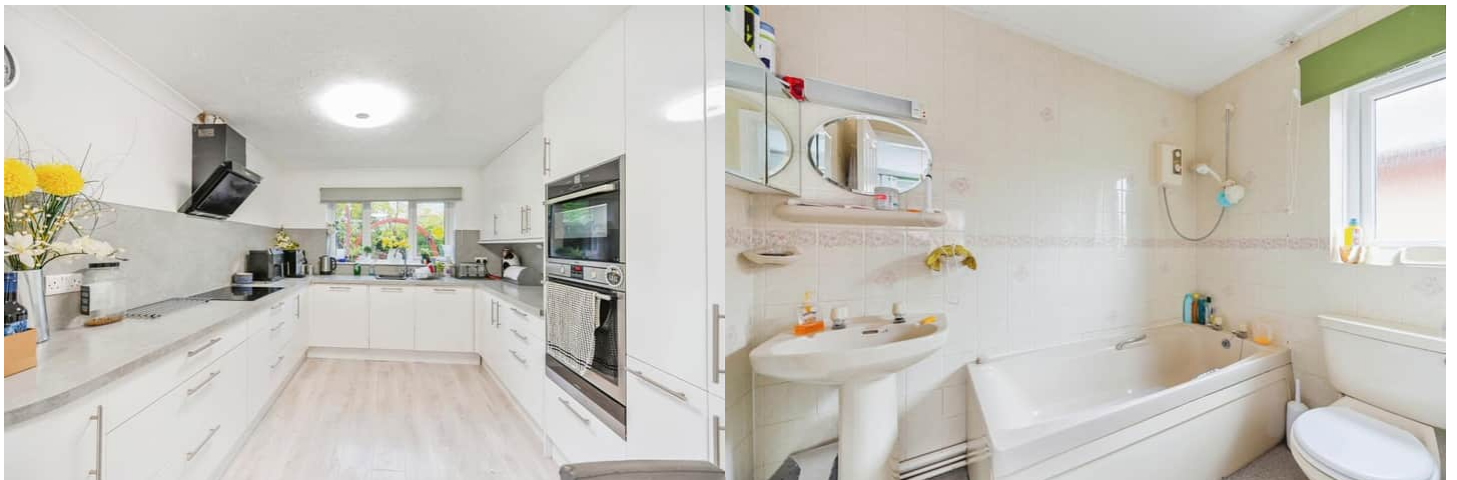
Bettermove are proud to present this 3 bedroom Detached Bungalow in the sought after area of Uttoxeter.

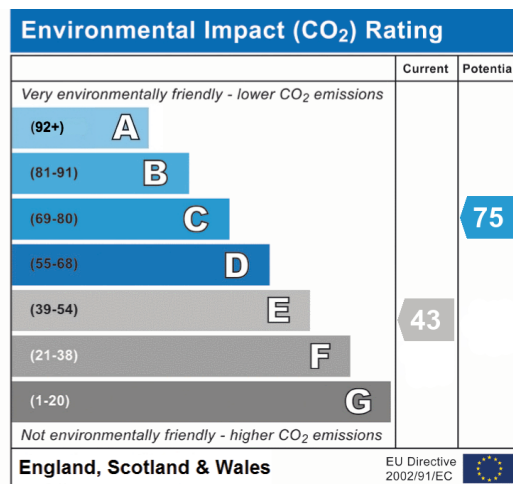
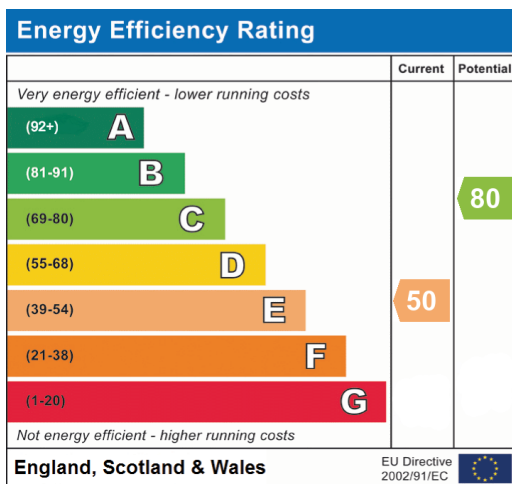
The property benefits from double glazing, gas central heating throughout and has off street parking available via the driveway and garage. The council tax band is E.

The interior of this property comprises a spacious living room, the fitted kitchen, the family bathroom and three bedrooms with the master bedroom benefiting from an ensuite bathroom. The exterior boasts a private rear garden, perfect for enjoying the summer months.

Located in the popular town of Uttoxeter, the property is close to a range of amenities, including shops, supermarkets, restaurants and pubs. Excellent transport connections can be found from the A50, Uttoxeter Train Station and many local bus routes.

This exciting opportunity should not be missed! All enquiries can be made through Bettermove on 0330 004 0050.









20-22 Bridge End, Leeds, LS1 4DJ  
t: 0330 004 0050 e: [hello@bettermove.co.uk](mailto:hello@bettermove.co.uk)  
[www.bettermove.co.uk](http://www.bettermove.co.uk)