



Uttley Close
Sheffield
South Yorkshire
S9

Offers in Excess of £151,000

bettermove 

Uttley Close Sheffield

Bettermove are proud to present this 2 bedroom terraced house in Sheffield.

The property benefits from double glazing, and gas central heating throughout, with two parking spaces available.

The council tax band is A.

The interior of this presented property comprises a spacious living room, and fitted kitchen on the ground floor. The first floor consists of two double bedrooms and the family bathroom. The exterior boasts a private, low maintenance rear garden, perfect for enjoying the summer months.

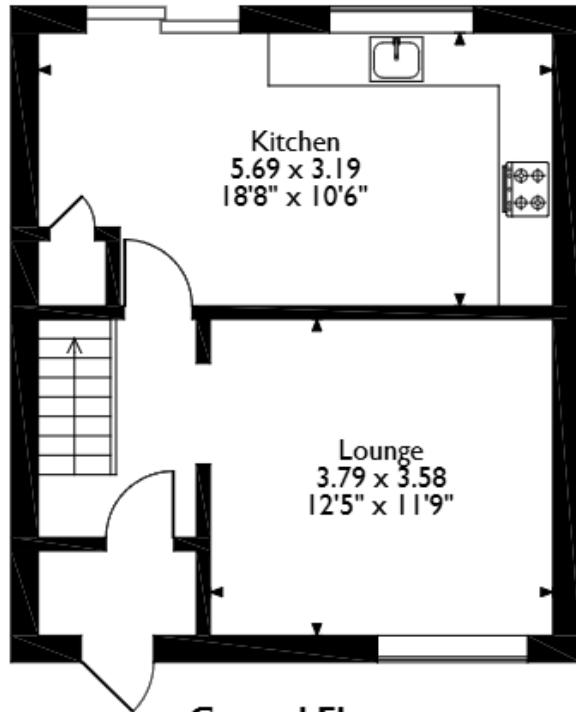
Located in the popular city of Sheffield, the property is close to a range of amenities, including shops, supermarkets, restaurants and pubs. Excellent transport connections can be found from Darnall Train Station, Attercliffe Tram Stop, a variety of local bus routes, and quick access to the M1.

This exciting opportunity should not be missed. All enquiries can be made through Bettermove.

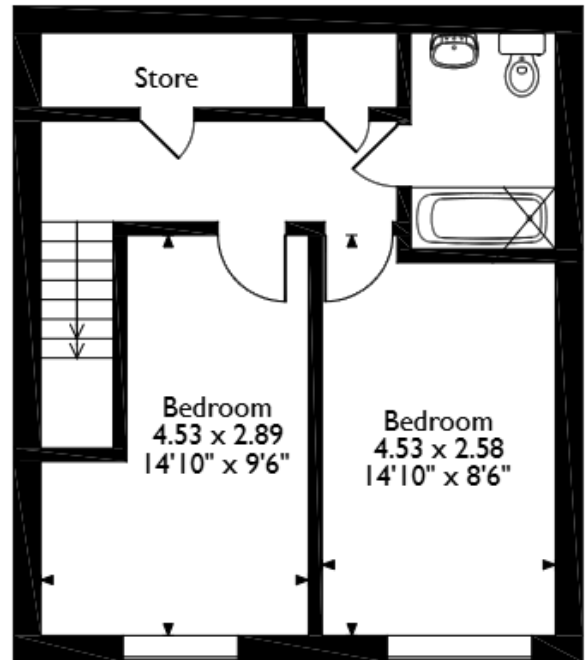


Uttley Close, Sheffield

Approximate Gross Internal Area 78 Sq M/840 Sq Ft



Ground Floor



First Floor

Please note that the location of doors, windows and other items are approximate and this floorplan is to be used for illustrative purposes only. Unauthorized reproduction is prohibited.

Energy Efficiency Rating		
	Current	Potential
Very energy efficient - lower running costs		
(92+) A		
(81-91) B		
(69-80) C		
(55-68) D		
(39-54) E		
(21-38) F		
(1-20) G		
Not energy efficient - higher running costs		
	72	77
England, Scotland & Wales		
EU Directive 2002/91/EC		

Environmental Impact (CO ₂) Rating		
	Current	Potential
Very environmentally friendly - lower CO ₂ emissions		
(92+) A		
(81-91) B		
(69-80) C		
(55-68) D		
(39-54) E		
(21-38) F		
(1-20) G		
Not environmentally friendly - higher CO ₂ emissions		
	73	76
England, Scotland & Wales		
EU Directive 2002/91/EC		



20-22 Bridge End, Leeds, LS1 4DJ
t: 0330 004 0050 e: hello@bettermove.co.uk
www.bettermove.co.uk

Please Note: These particulars, whilst believed to be accurate are set out as a general outline only for guidance and do not constitute any part of an offer or contract. Intending purchasers should not rely on them as statements of representations of fact, but must satisfy themselves by inspection or otherwise as to their accuracy. No person in this firm's employment has the authority to make or give any representation or warranty in respect of the property.