



Hartington Street
Manchester
M14

Offers In Excess Of £205,000

bettermove

Hartington Street Manchester

Bettermove are proud to present this 3 bedroom terraced in Manchester, available with no forward chain.

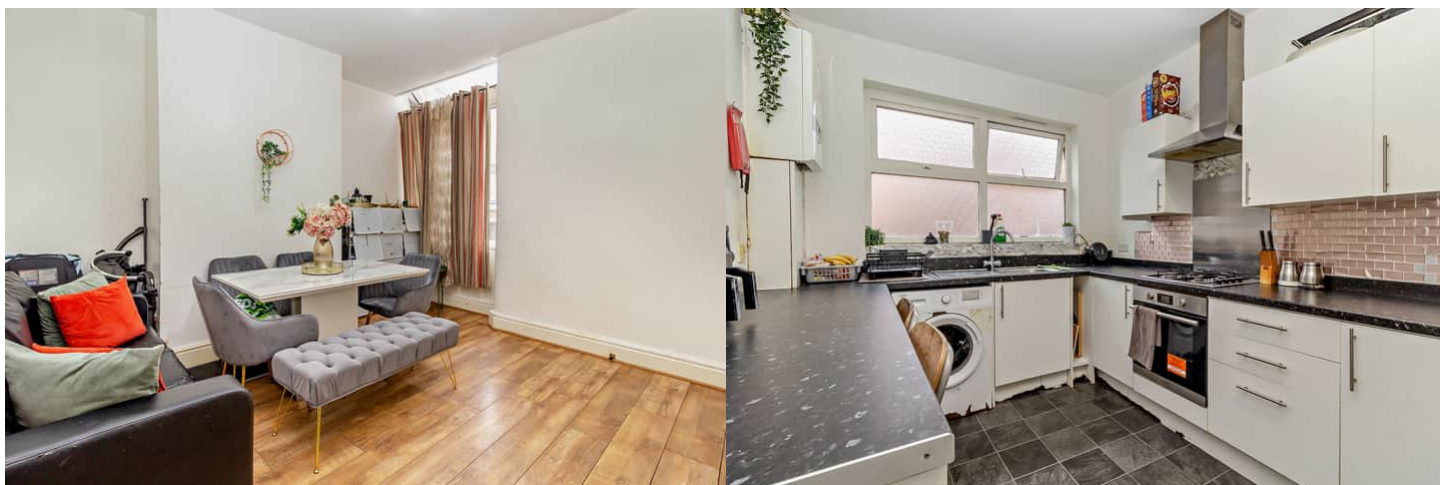
The property is currently tenanted and it will be sold with tenants in situ for immediate investment. Rental yields can be obtained through Bettermove.

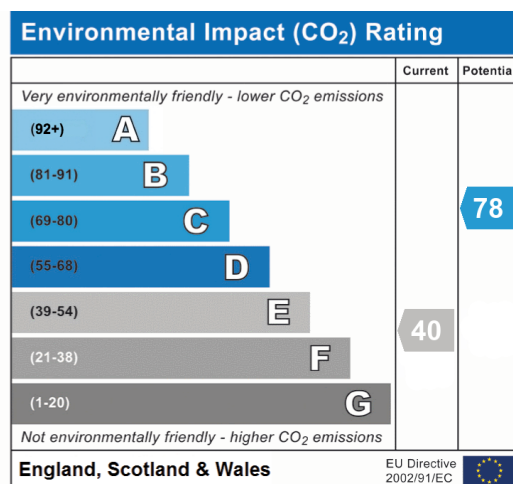
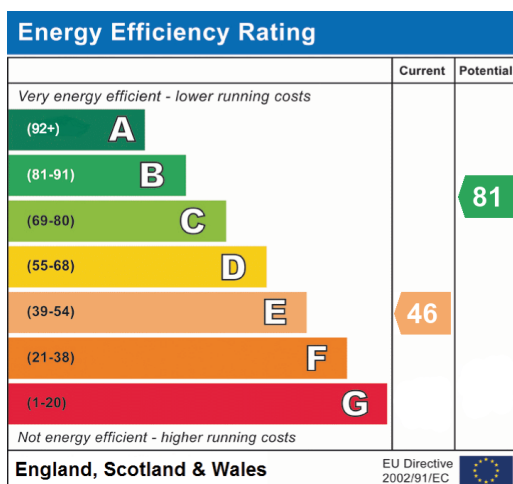
The property benefits from double glazing, gas central heating throughout and has off street parking available.

The council tax band is A.

The interior of this beautifully presented property comprises a spacious living room, dining room and fitted kitchen on the ground floor. The first floor consists of 3 bedrooms and the family bathroom. The exterior boasts a private rear yard.

Located in the popular city of Manchester, the property is close to a range of amenities, including shops, supermarkets,







20-22 Bridge End, Leeds, LS1 4DJ
t: 0330 004 0050 e: hello@bettermove.co.uk
www.bettermove.co.uk