



**7 Gowy Walk  
Winsford  
Cheshire  
CW7 3HZ**

**Offers in Excess of £105,000**

**bettermove**



# Gowy Walk

## Winsford

Bettermove are proud to present this 3 bedroom End of Terrace House in Winsford, available with no forward chain.

The property benefits from double glazing, gas central heating throughout and has ample parking available nearby. The council tax band is A.

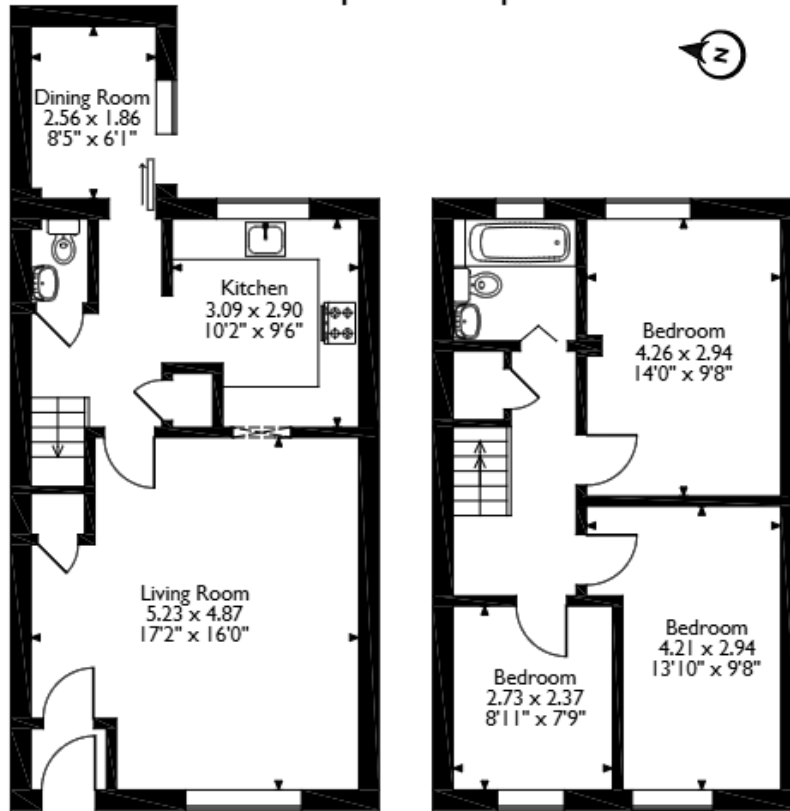
The interior of this property comprises a spacious living room, dining room, the fitted kitchen and a convenient WC on the ground floor. The first floor consists of three bedrooms and the family bathroom. The exterior boasts a private rear courtyard and front garden.

Located in the popular town of Winsford, the property is close to a range of amenities, including shops, supermarkets, restaurants and pubs. Excellent transport connections can be found from the A54, Winsford Train Station and many local bus routes.

This exciting opportunity should not be missed! All enquiries can be made through Bettermove on 0330 004 0050.



**Gowy Walk, Winsford**  
**Approximate Gross Internal Area**  
**88 Sq M/947 Sq Ft**



**Ground Floor**

**First Floor**

Please note that the location of doors, windows and other items are approximate and this floorplan is to be used for illustrative purposes only. Unauthorized reproduction is prohibited.

Energy Efficiency Rating		
	Current	Potential
Very energy efficient - lower running costs		
(92+) <b>A</b>		
(81-91) <b>B</b>		
(69-80) <b>C</b>		
(55-68) <b>D</b>		
(39-54) <b>E</b>		
(21-38) <b>F</b>		
(1-20) <b>G</b>		
Not energy efficient - higher running costs		
	71	77
England, Scotland & Wales		
EU Directive 2002/91/EC		

Environmental Impact (CO <sub>2</sub> ) Rating		
	Current	Potential
Very environmentally friendly - lower CO <sub>2</sub> emissions		
(92+) <b>A</b>		
(81-91) <b>B</b>		
(69-80) <b>C</b>		
(55-68) <b>D</b>		
(39-54) <b>E</b>		
(21-38) <b>F</b>		
(1-20) <b>G</b>		
Not environmentally friendly - higher CO <sub>2</sub> emissions		
	73	77
England, Scotland & Wales		
EU Directive 2002/91/EC		





20-22 Bridge End, Leeds, LS1 4DJ  
t: 0330 004 0050 e: [hello@bettermove.co.uk](mailto:hello@bettermove.co.uk)  
[www.bettermove.co.uk](http://www.bettermove.co.uk)