



Coopers Lane  
Evesham  
Worcestershire  
WR11

Offers in Excess of £161,000

bettermove

# Coopers Lane

## Evesham

Bettermove are proud to present this 2 bedroom terraced cottage in Evesham, available with no forward chain.

The property is currently tenanted and it will be sold with tenants in situ for immediate investment. Rental yields can be obtained through Bettermove.

The property benefits from double glazing, and gas central heating throughout, Parking is available locally or on-street, spaces may be available to rent.

The council tax band is C.

This is a leasehold property with 973 years remaining on the lease.

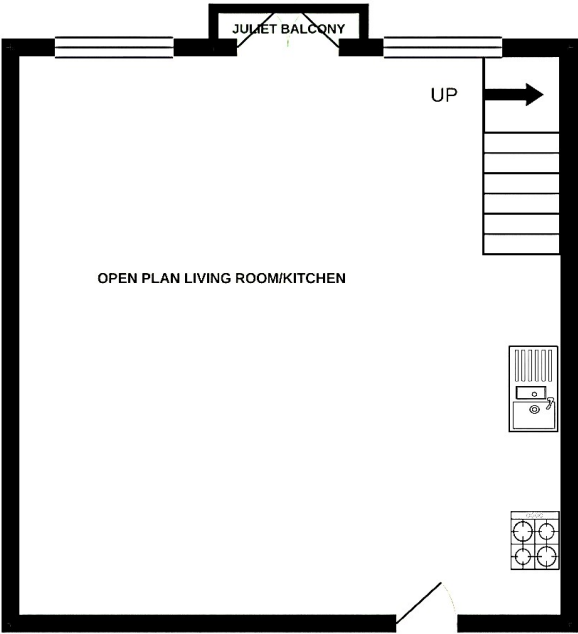
The interior of this beautifully presented property comprises a spacious open-plan living and kitchen area on the ground floor, with a Juliet balcony. The first floor consists of two bedrooms and the family bathroom. The exterior boasts a communal garden, perfect for enjoying the summer months.

Located in the popular town of Evesham, the property is close to a range of amenities, including shops, supermarkets, restaurants and pubs. Excellent transport connections can be found from Evesham Train Station, a variety of local bus routes, and quick access to the A46, leading to the M5.

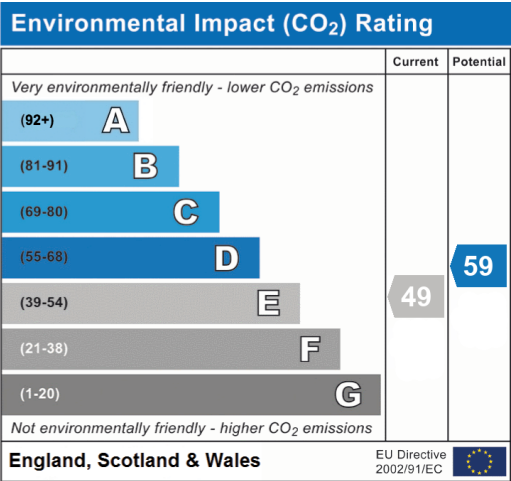
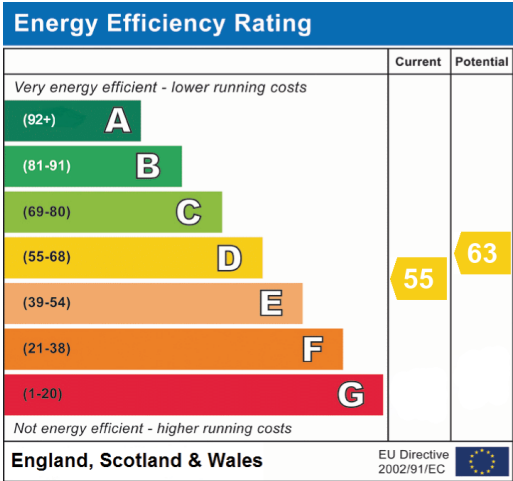
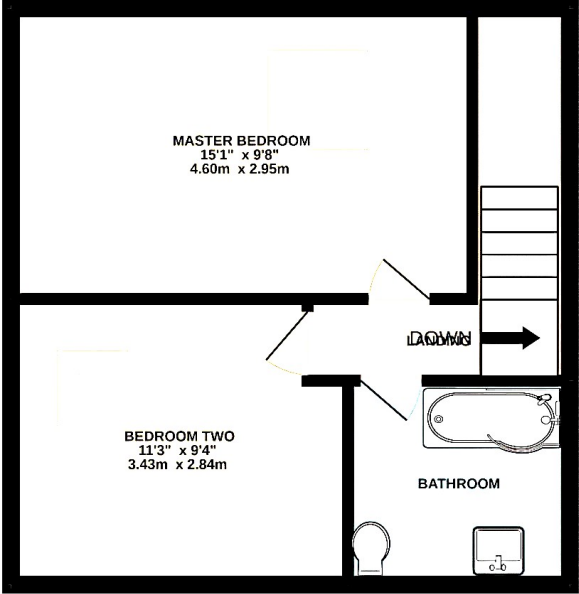
This exciting opportunity should not be missed. All enquiries can be made through Bettermove.



GROUND FLOOR  
350 sq.ft. (32.5 sq.m.) approx.



1ST FLOOR  
350 sq.ft. (32.5 sq.m.) approx.





20-22 Bridge End, Leeds, LS1 4DJ  
t: 0330 004 0050 e: [hello@bettermove.co.uk](mailto:hello@bettermove.co.uk)  
[www.bettermove.co.uk](http://www.bettermove.co.uk)