



Alexander Square
Eastleigh
Hampshire
SO50

Offers in Excess of £160,000

bettermove

Alexander Square Eastleigh

Bettermove are proud to present this 2 bedroom flat in Eastleigh. Available with no forward chain.

The property benefits from double glazing, electric central heating throughout and has off street parking available via residents parking.

The council tax band is B.

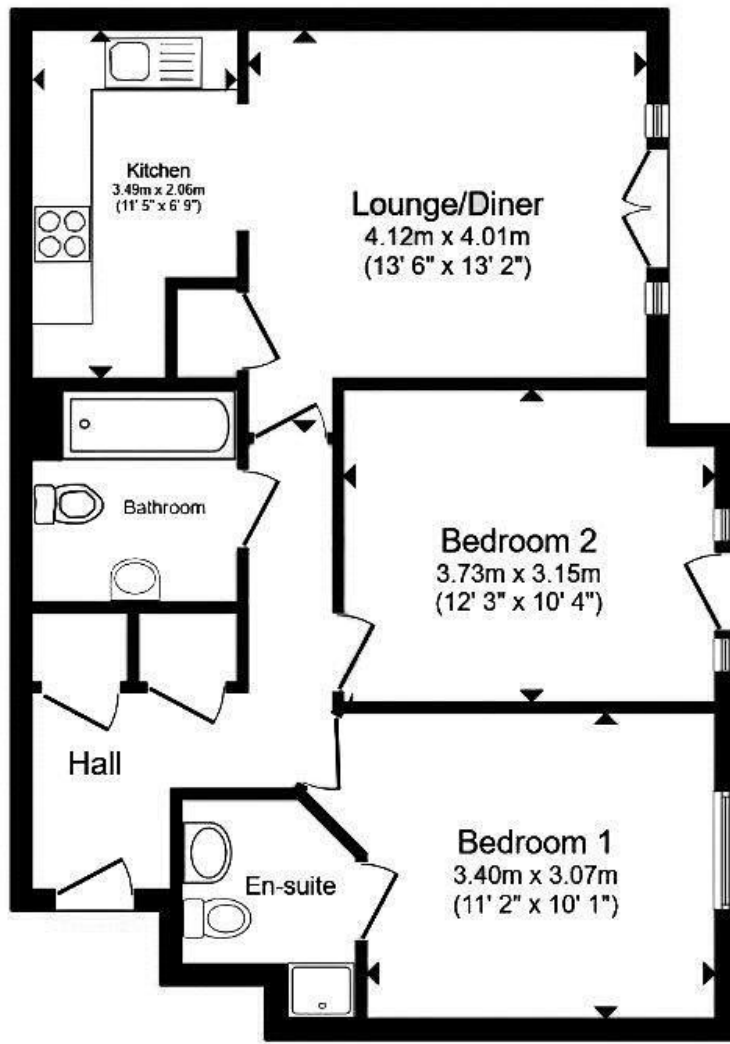
This is a leasehold property with 138 years remaining on the lease; the ground rent is £311pa and the service charge is £1,948pa.

The interior of this beautifully presented property comprises a spacious living room, dining room and fitted kitchen, as well as the 2 bedrooms and the family bathroom.

Located in the popular town of Eastleigh, the property is close to a range of amenities, including shops, supermarkets, restaurants and pubs. Excellent transport connections can be found from Eastleigh train station, various routes and the M3 and the M27.

This exciting opportunity should not be missed. All enquiries can be made through Bettermove.





Energy Efficiency Rating		
	Current	Potential
Very energy efficient - lower running costs		
(92+) A		
(81-91) B		
(69-80) C		
(55-68) D		
(39-54) E		
(21-38) F		
(1-20) G		
Not energy efficient - higher running costs		
	74	75
England, Scotland & Wales		
EU Directive 2002/91/EC		

Environmental Impact (CO ₂) Rating		
	Current	Potential
Very environmentally friendly - lower CO ₂ emissions		
(92+) A		
(81-91) B		
(69-80) C	82	83
(55-68) D		
(39-54) E		
(21-38) F		
(1-20) G		
Not environmentally friendly - higher CO ₂ emissions		
England, Scotland & Wales		
EU Directive 2002/91/EC		



20-22 Bridge End, Leeds, LS1 4DJ
t: 0330 004 0050 e: hello@bettermove.co.uk
www.bettermove.co.uk