



Knottgrass Road
Locks Heath
Southampton
Hampshire
SO31

Offers In Excess Of £300,000

bettermove

Knottgrass Road Southampton

Bettermove are proud to present this 4 bedroom terraced house in Locks Heath.

The property benefits from double glazing, and gas central heating throughout, with off street parking available to the rear of the property, as well as on street parking.

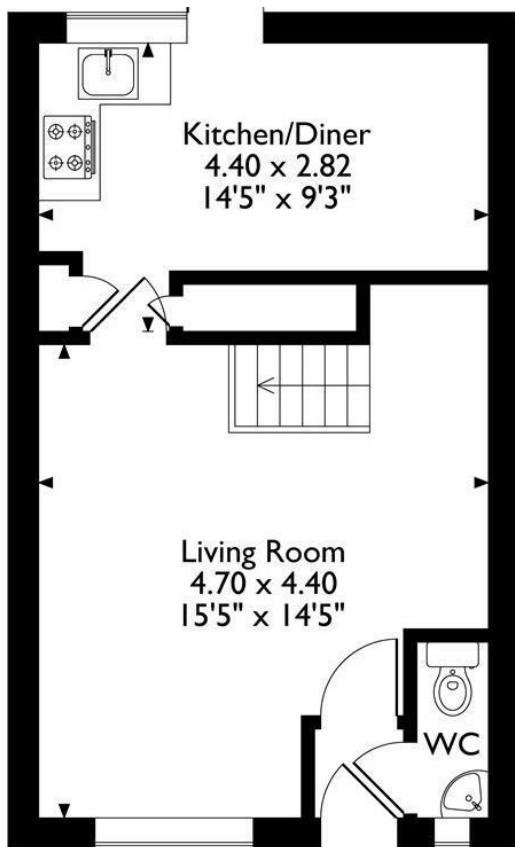
The council tax band is C.

The interior of this beautifully presented property comprises a spacious living room, fitted kitchen/diner, and WC on the ground floor. The first floor consists of four bedrooms, including three doubles, and one single, alongside the family bathroom. The exterior boasts a lawned front garden, and a private rear garden, with both patio and artificial lawn areas, perfect for enjoying the summer months.

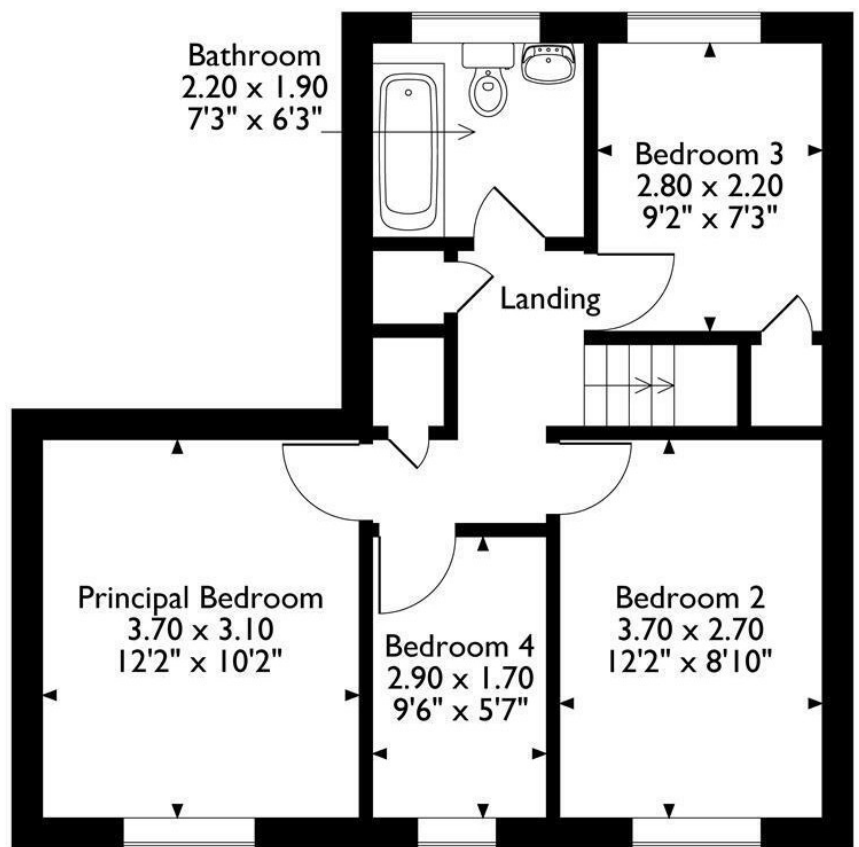
Located in the popular suburb of Locks Heath, Southampton, the property is close to a range of amenities, including shops, supermarkets, restaurants and pubs. Excellent transport connections can be found from Swanwick Train Station, a variety of local bus routes, and quick access to the M27.

This exciting opportunity should not be missed. All enquiries can be made through Bettermove.

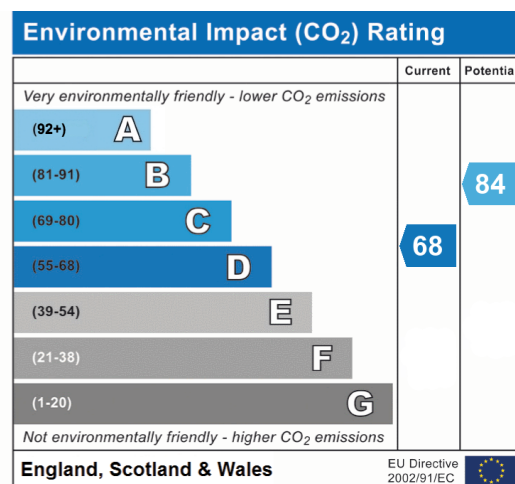
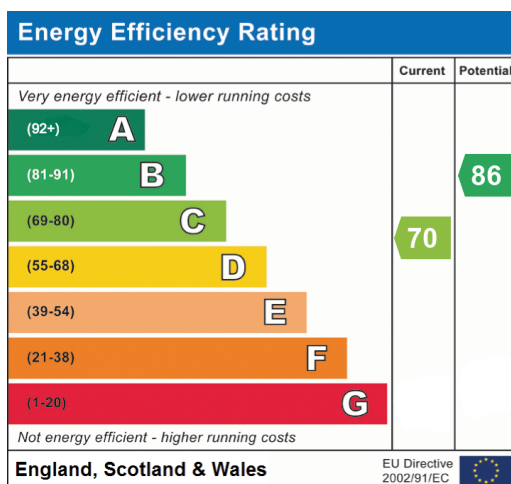




Ground Floor



First Floor





20-22 Bridge End, Leeds, LS1 4DJ
t: 0330 004 0050 e: hello@bettermove.co.uk
www.bettermove.co.uk