



Charters Crescent
South Hetton
Durham
DH6

Offers in Excess of £116,000

bettermove

Charters Crescent Durham

Bettermove are proud to present this 2 bedroom semi-detached house in South Hetton.

The property benefits from double glazing, and gas central heating throughout, with has off street parking available via the driveway.

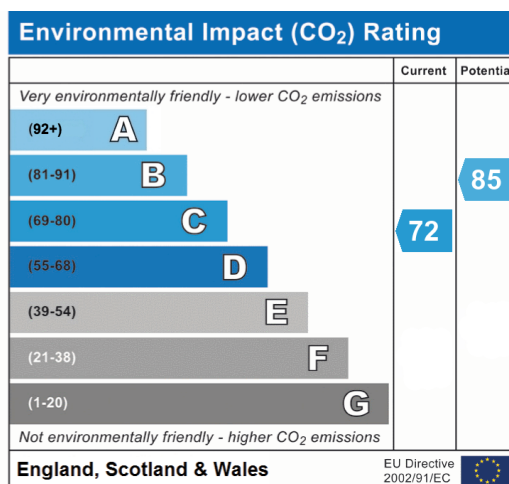
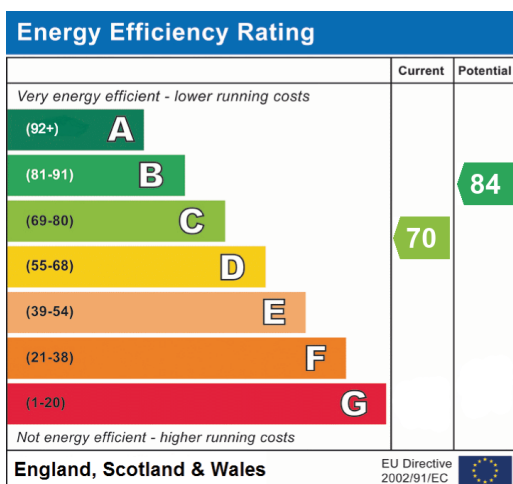
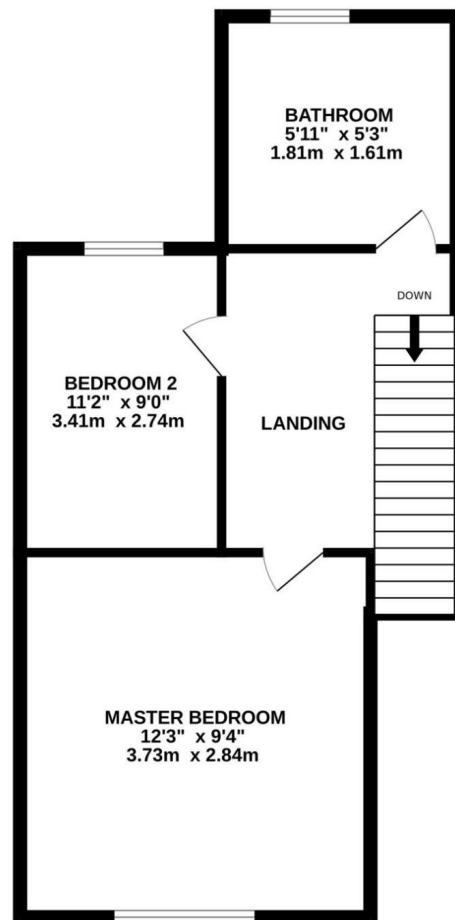
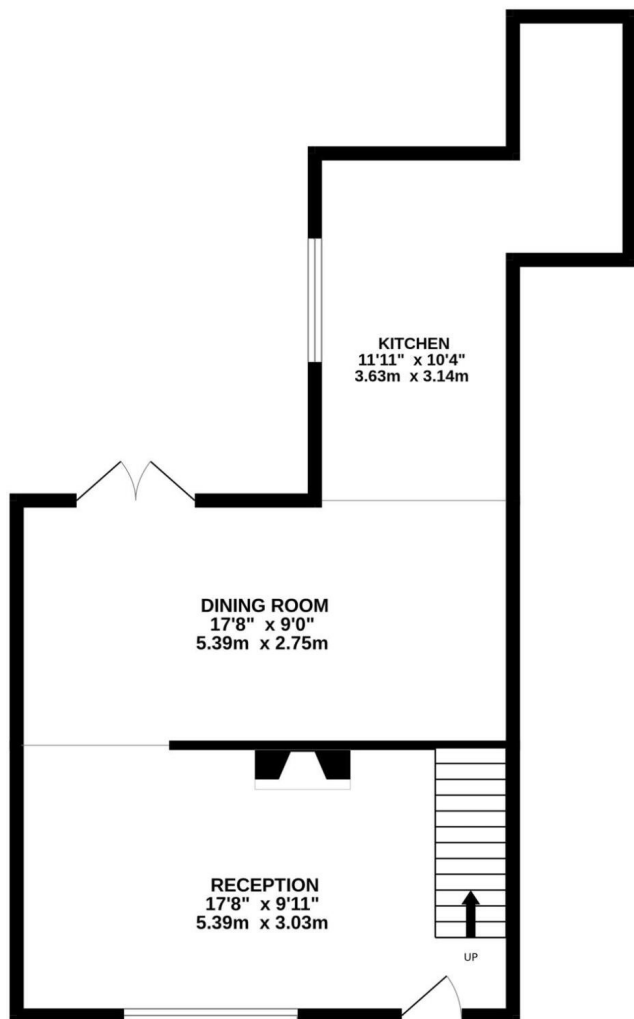
The council tax band is A.

The interior of this beautifully presented property comprises an open plan layout, with a spacious living room, dining room and fitted kitchen on the ground floor. The first floor consists of two generous double bedrooms and a contemporary bathroom. The exterior boasts a summerhouse, and a private rear garden, perfect for enjoying the summer months.

Located in the sought after village of South Hetton, Durham, the property is close to a range of amenities, including shops, supermarkets, restaurants, pubs, and schools. Excellent transport connections can be found from Horden Train Station, a variety of local bus routes, and quick access to the A1(M).

This exciting opportunity should not be missed. All enquiries can be made through Bettermove.







20-22 Bridge End, Leeds, LS1 4DJ
t: 0330 004 0050 e: hello@bettermove.co.uk
www.bettermove.co.uk

Please Note: These particulars, whilst believed to be accurate are set out as a general outline only for guidance and do not constitute any part of an offer or contract. Intending purchasers should not rely on them as statements of representations of fact, but must satisfy themselves by inspection or otherwise as to their accuracy. No person in this firm's employment has the authority to make or give any representation or warranty in respect of the property.