



Corbett Avenue
Tywyn
Gwynedd
LL36

Offers in Excess of £412,000

bettermove

Corbett Avenue

Tywyn

Bettermove are proud to present this 6 bedroom Edwardian Townhouse in Tywyn.

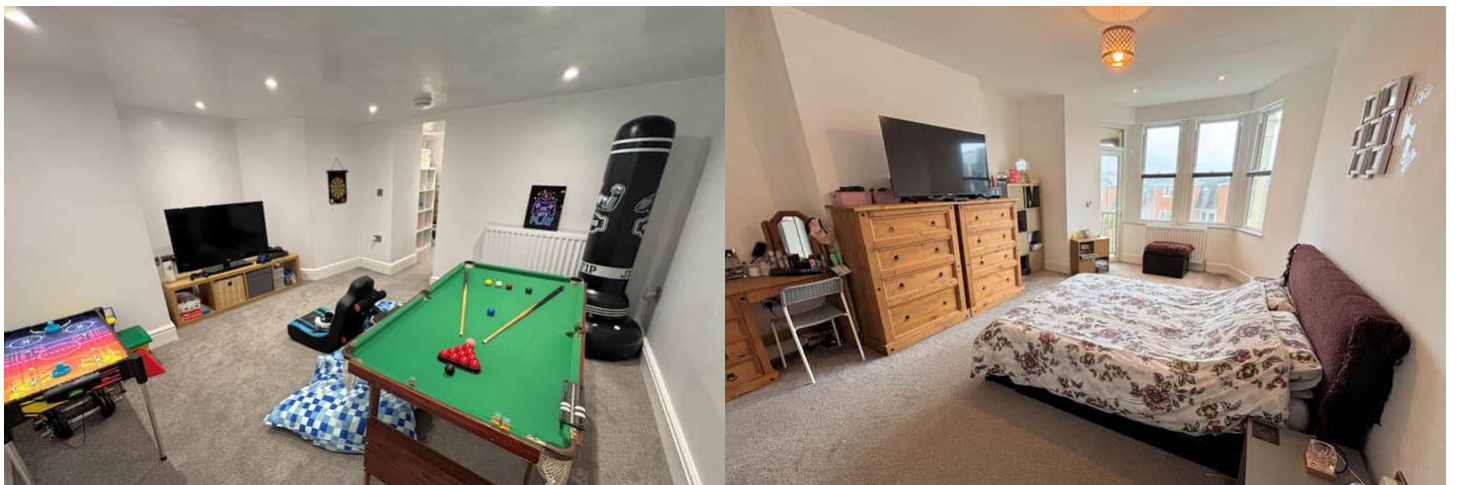
The property benefits from double glazing, and gas central heating throughout, with has off street parking available via the garage, as well as ample on street parking.

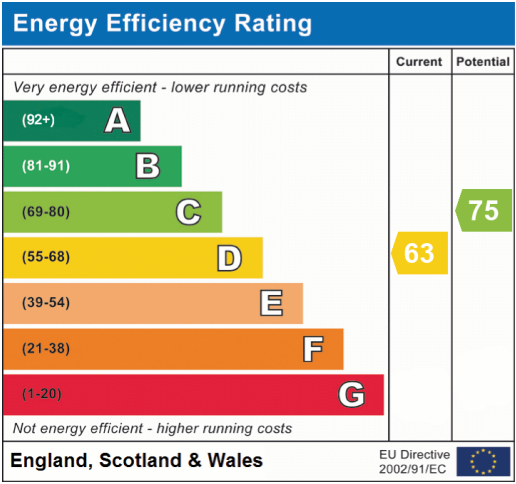
The council tax band is E.

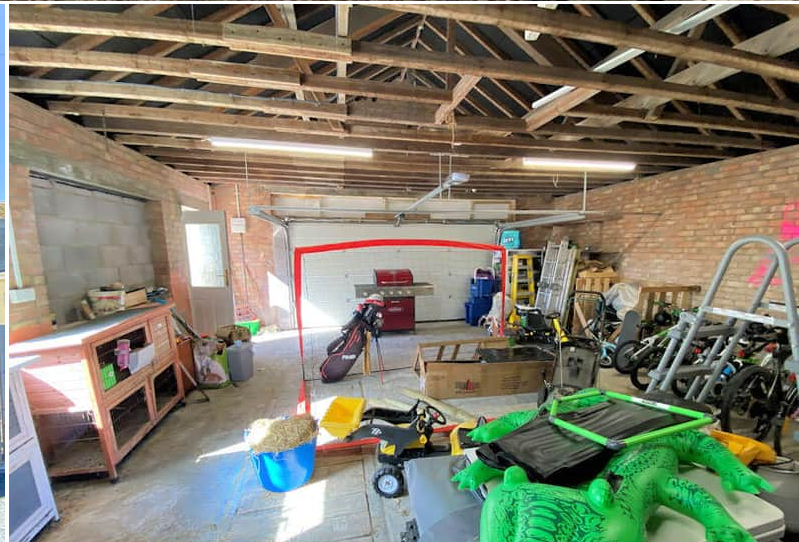
The interior of this property has been fully renovated in recent years. The property offers a spacious kitchen diner, utility room, ground floor shower cloakroom and two large reception rooms. There are six double bedrooms over two floors, including two en-suite bedrooms, plus a family bathroom. Additional features include a converted cellar games room, enclosed front and rear gardens, and a double detached garage/workshop.

Located in the popular coastal town of Tywyn, the property is close to a range of amenities, including shops, supermarkets, restaurants, schools, and a short distance to the seafront. Excellent transport connections can be found from Tywyn Train Station, a variety of local bus routes, and quick access to the A487.

This exciting opportunity should not be missed. All enquiries can be made through Bettermove.







20-22 Bridge End, Leeds, LS1 4DJ
t: 0330 004 0050 e: hello@bettermove.co.uk
www.bettermove.co.uk