



Hedley Drive
Brimington
Chesterfield
Derbyshire
S43

Offers in Excess of £410,000

bettermove

Hedley Drive Chesterfield

Bettermove are proud to present this 5 bedroom detached house in Brimington.

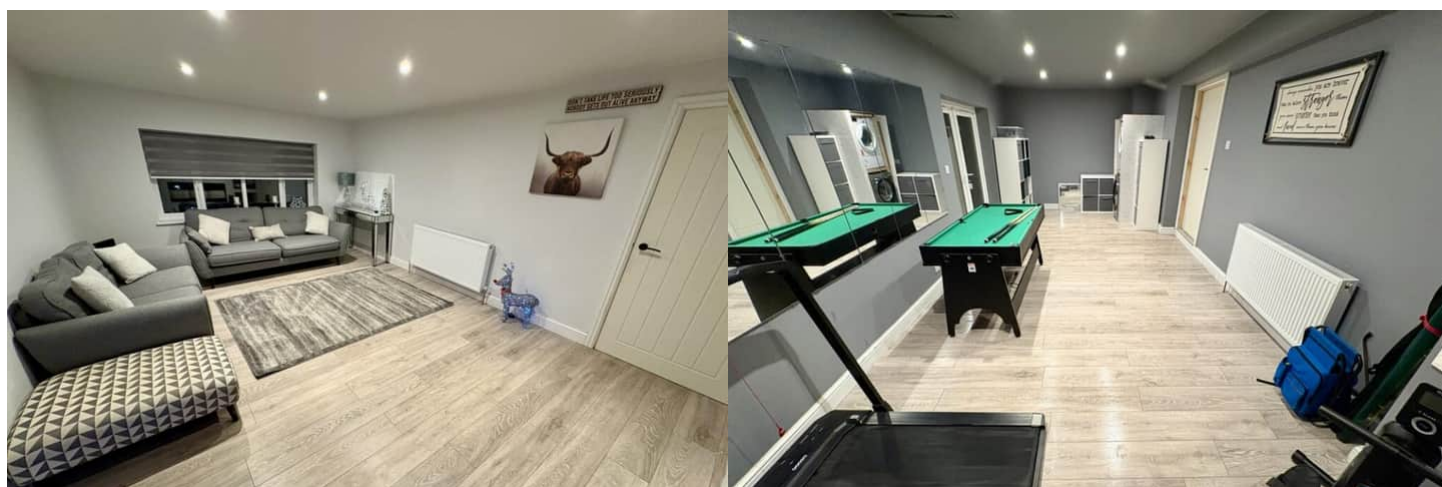
This property benefits from double glazing, log burner and gas central heating throughout, with off road parking available via the driveway.

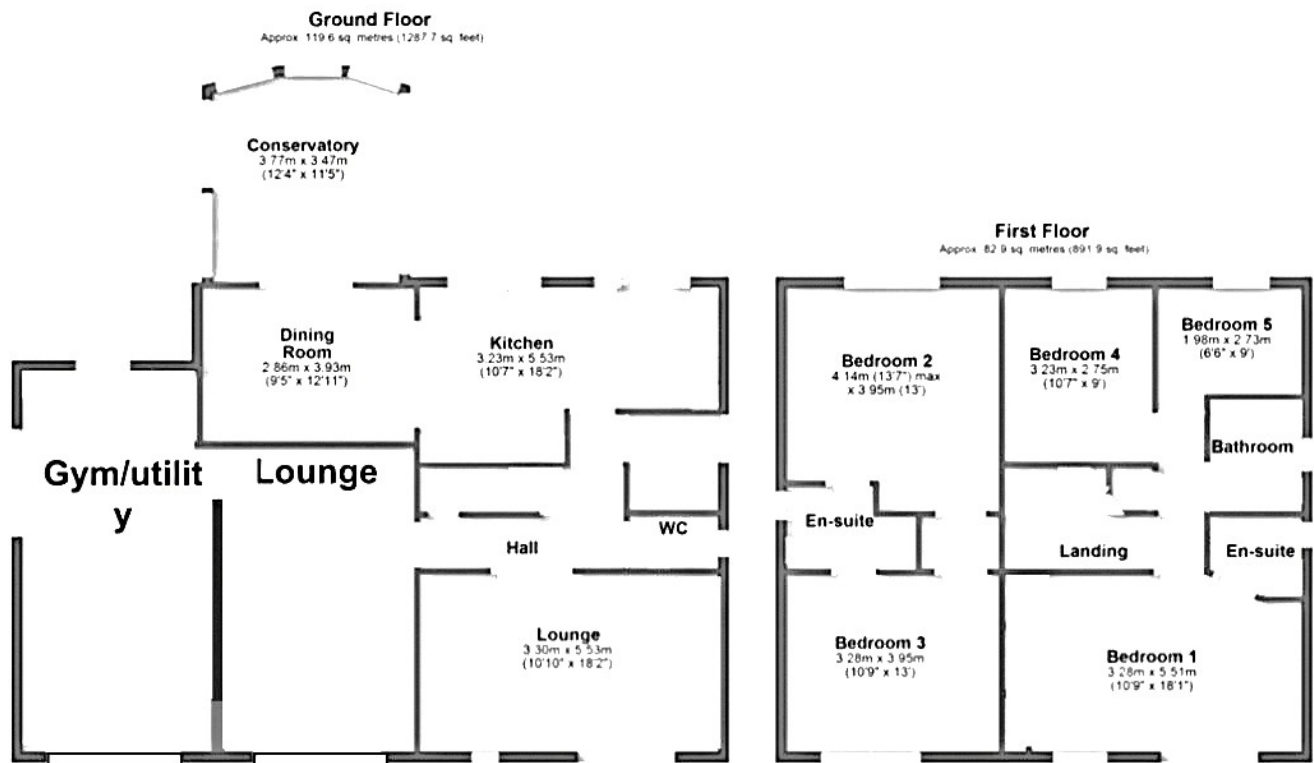
The council tax band is D.

The interior of this beautifully presented property comprises a spacious living room, open plan kitchen diner, WC, and conservatory, with the double garage being converted into a gym/utility room and second living room. Upstairs, the first floor consists of five bedrooms, including the master bedroom, with private en-suite, bedrooms two and three are connected by a Jack and Jill bathroom, alongside the family bathroom, with the smallest bedroom ideal for an office or nursery. Outside, the property boasts a private rear garden, with both patio and lawn areas, perfect for enjoying the summer months.

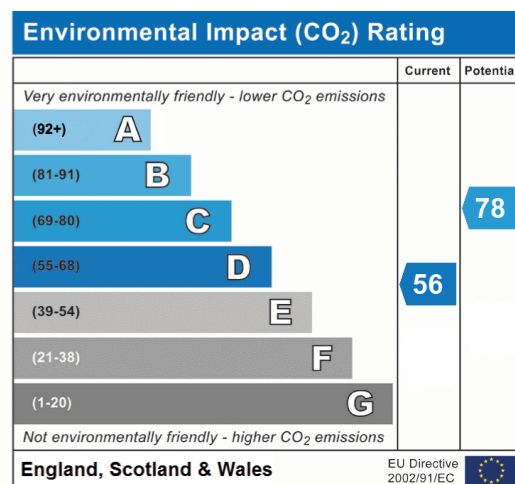
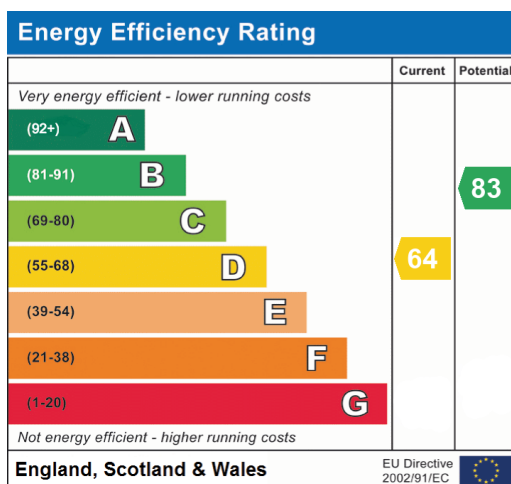
Located in the sought after village of Brimington, Chesterfield, the property is close to a range of amenities, including shops, supermarkets, restaurants, pubs, and schools. Excellent transport links can be found from Chesterfield Train Station, a variety of local bus routes, and quick access to the M1.

This exciting opportunity should not be missed! All enquiries can be made through Bettermove.





Total area: approx. 202.5 sq. metres (2179.5 sq. feet)





20-22 Bridge End, Leeds, LS1 4DJ
t: 0330 004 0050 e: hello@bettermove.co.uk
www.bettermove.co.uk