



Fryatt Street
Barry
Vale of Glamorgan
CF63

Offers In Excess Of £142,000

bettermove

Fryatt Street

Barry

Bettermove are proud to present this 2 bedroom terraced house in Barry.

The property benefits from double glazing, gas central heating throughout and has on street parking available.

The council tax band is B.

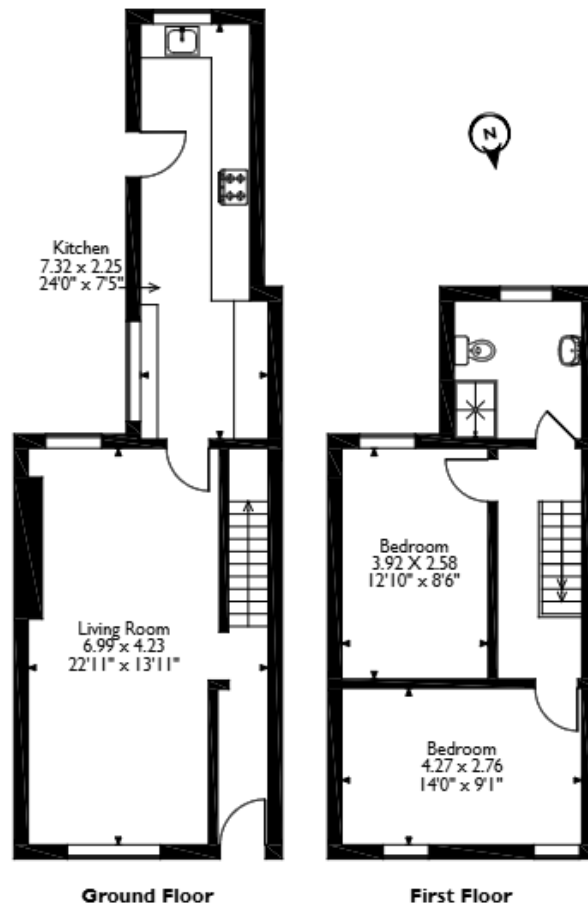
The interior of this well presented property comprises a spacious living room, dining room and fitted kitchen on the ground floor. The first floor consists of 2 bedrooms and the family bathroom. The exterior boasts a private rear garden, perfect for enjoying the summer months.

Located in the popular town of Barry, the property is close to a range of amenities, including shops, supermarkets, restaurants and pubs. Excellent transport connections can be found from Barry Docks train station (1.3 miles), various bus routes and the M4.

This exciting opportunity should not be missed. All enquiries can be made through Bettermove.



Fryatt Street, Barry
Approximate Gross Internal Area
80 Sq M/861 Sq Ft



Please note that the location of doors, windows and other items are approximate and this floorplan is to be used for illustrative purposes only. Unauthorised reproduction is prohibited.



20-22 Bridge End, Leeds, LS1 4DJ
t: 0330 004 0050 e: hello@bettermove.co.uk
www.bettermove.co.uk