



Butterson Road
Rhyl
Denbighshire
LL18

Offers in Excess of £189,000

bettermove

Butterton Road

Rhyl

Bettermove are proud to present this 6 bedroom terraced house in Rhyl, available with no forward chain.

This property benefits from double glazing, and gas central heating throughout, with on street parking available.

The council tax band is C.

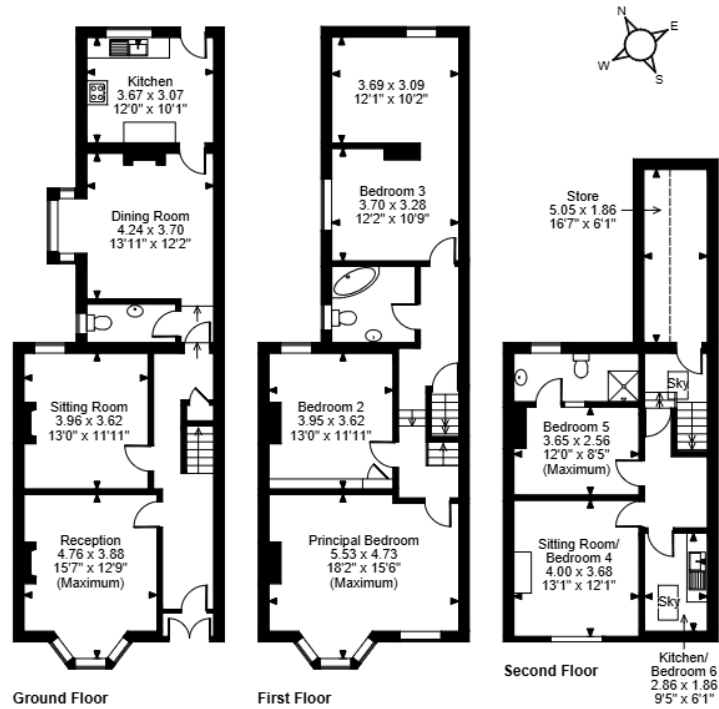
The interior of this well-presented home offers generous and versatile accommodation arranged over three floors. The ground floor comprises two reception rooms, dining room, fitted kitchen, and a WC. On the first floor are four well-proportioned bedrooms served by a family bathroom. The second floor provides highly flexible living space, which can be configured as two additional bedrooms or utilised as a self-contained apartment, complete with a living room, bedroom, fitted kitchen, and shower room. Outside, the property boasts a private rear garden, perfect for enjoying the summer months.

Located in the popular coastal town of Rhyl, the property is close to a range of amenities, including shops, supermarkets, restaurants, pubs, schools, and a short distance to the seafront. Excellent transport links can be found from Rhyl Train Station, a variety of local bus routes, and quick access to the North Wales Expressway.

This exciting opportunity should not be missed! All enquiries can be made through Bettermove.



Butterton Road, Rhyl
Approximate Gross Internal Area
2295 Sq Ft/213 Sq M



FOR ILLUSTRATIVE PURPOSES ONLY - NOT TO SCALE
The position & size of doors, windows, appliances and other features are approximate only.
□ □ □ Denotes restricted head height
© ehous. Unauthorised reproduction prohibited. Drawing ref. dig/8676042/NGS



20-22 Bridge End, Leeds, LS1 4DJ
t: 0330 004 0050 e: hello@bettermove.co.uk
www.bettermove.co.uk