



School Walk
Burntwood
Staffordshire
WS7

Offers in Excess of £265,000

bettermove

School Walk

Burntwood

Bettermove are proud to present this 4 bedroom semi-detached house in Burntwood.

This property benefits from double glazing, and gas central heating throughout, with off road parking available via the driveway.

The council tax band is C.

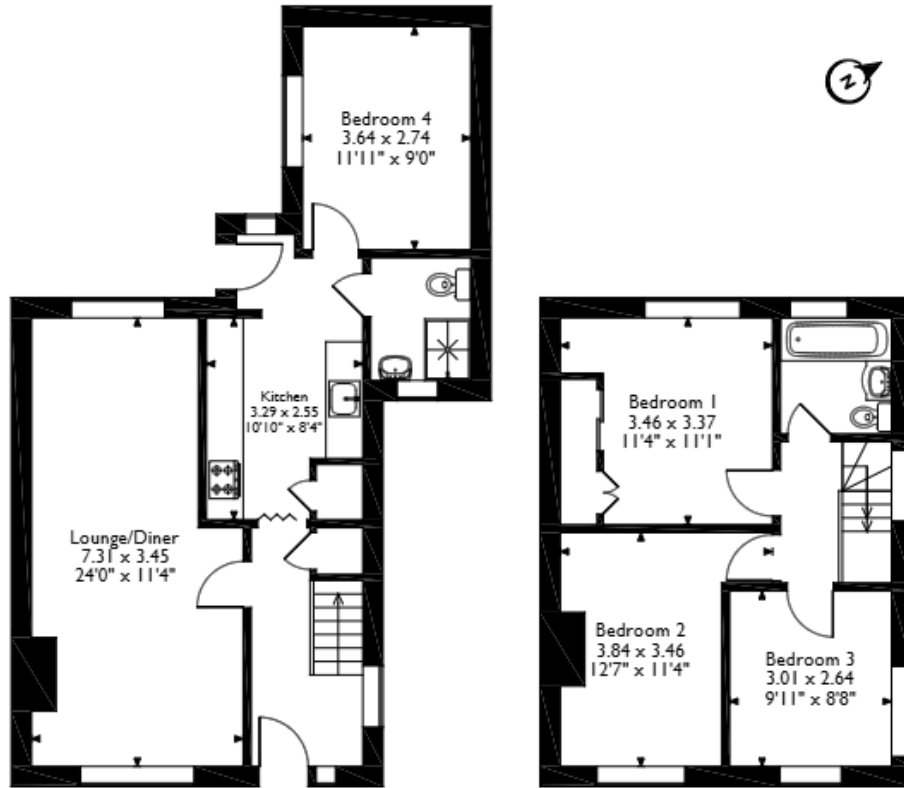
The interior of this well presented property comprises a spacious living/dining area, fitted kitchen, shower room, and the fourth bedroom on the ground floor. The first floor consists of the further three bedrooms, and the family bathroom. The exterior boasts a front, lawned garden and driveway, and a private rear garden, with both lawn and patio areas, perfect for enjoying the summer months.

Located in the popular town of Burntwood, the property is close to a range of amenities, including shops, supermarkets, restaurants, pubs, and schools. Excellent transport links can be found from Hednesford (4.3 miles), and Cannock (5.2 miles) train stations, a variety of local bus routes, and quick access to the M6 Toll.

This exciting opportunity should not be missed! All enquiries can be made through Bettermove.



School Walk, Burntwood, Staffordshire
Approximate Gross Internal Area
95 Sq M/1023 Sq Ft



Ground Floor

First Floor

Please note that the location of doors, windows and other items are approximate and this floorplan is to be used for illustrative purposes only. Unauthorized reproduction is prohibited.



20-22 Bridge End, Leeds, LS1 4DJ
t: 0330 004 0050 e: hello@bettermove.co.uk
www.bettermove.co.uk