



Shire Gate
Chelmsford
Essex
CM2

Offers In Excess Of £220,000

bettermove

Shire Gate Chelmsford

Bettermove are proud to present this 2 bedroom apartment in Chelmsford, available with no forward chain.

This property benefits from double glazing, and gas central heating throughout.

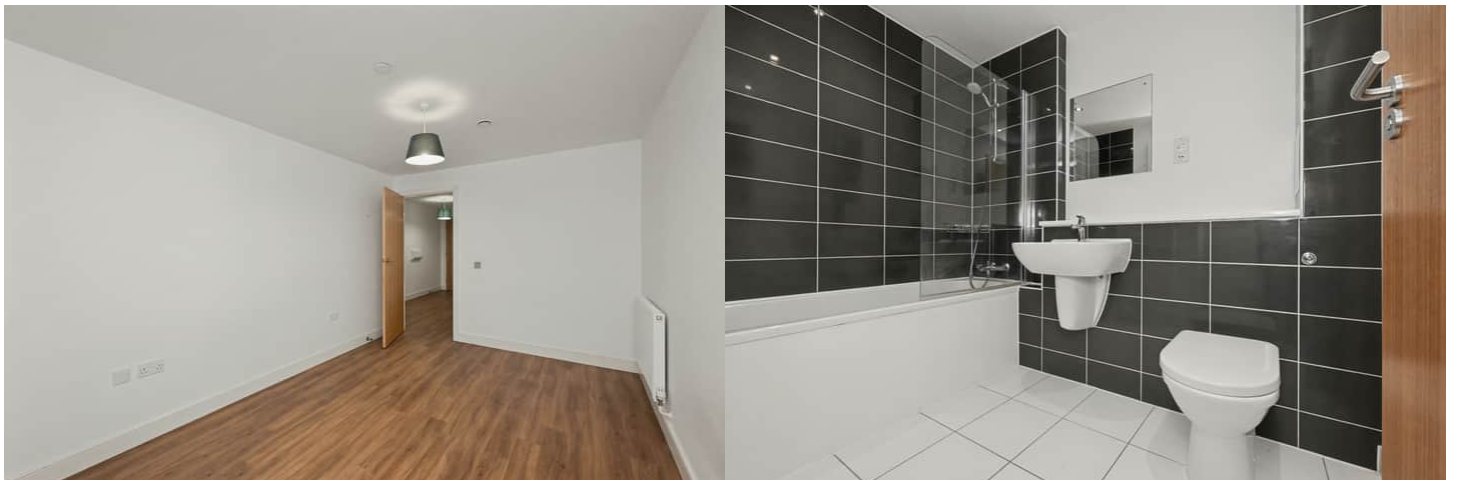
The council tax band is D.

This is a leasehold property with 139 years remaining on the lease.

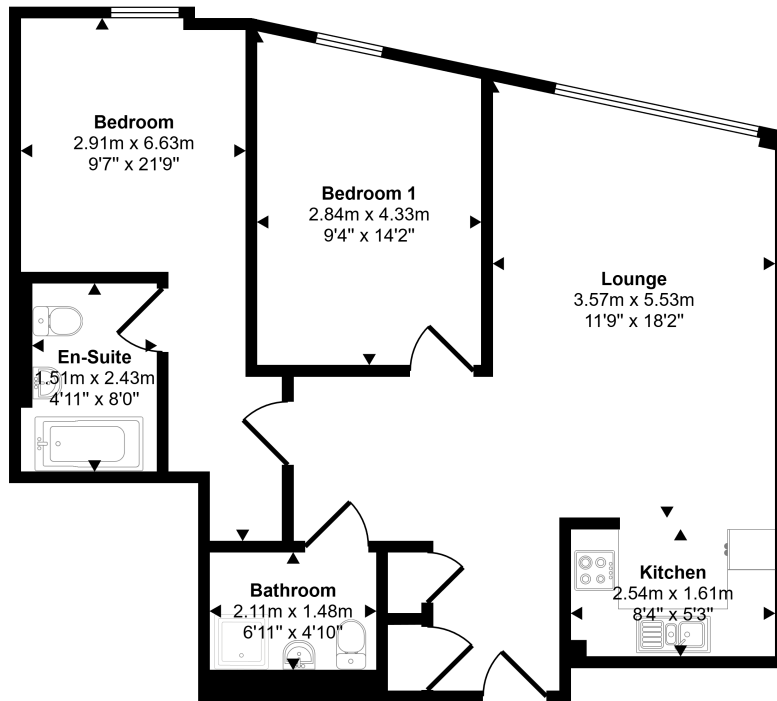
The interior of this beautifully presented property comprises a large, spacious living room, fitted kitchen, two double bedrooms, with the master bedroom benefitting from a private en-suite, alongside the family bathroom.

Located in the popular city of Chelmsford, the property is close to a range of amenities, including shops, supermarkets, restaurants, and pubs. Excellent transport links can be found from Chelmsford Train Station, a variety of local bus routes, and quick access to the A12.

This exciting opportunity should not be missed! All enquiries can be made through Bettermove.



Approx Gross Internal Area
68 sq m / 732 sq ft



Floorplan

Whilst every attempt has been made to ensure the accuracy of the floor plan contained here, measurements of doors, windows, rooms and any other items are approximate and no responsibility is taken for any error, omission, or mis-statement. The measurements should not be relied upon for valuation, transaction and/or funding purposes. This plan is for illustrative purposes only and should be used as such by any prospective purchaser or tenant.

Energy Efficiency Rating		
	Current	Potential
Very energy efficient - lower running costs		
(92+) A		
(81-91) B		
(69-80) C		
(55-68) D	69	69
(39-54) E		
(21-38) F		
(1-20) G		
Not energy efficient - higher running costs		
England, Scotland & Wales		
	EU Directive 2002/91/EC	

Environmental Impact (CO ₂) Rating		
	Current	Potential
Very environmentally friendly - lower CO ₂ emissions		
(92+) A		
(81-91) B		
(69-80) C	74	74
(55-68) D		
(39-54) E		
(21-38) F		
(1-20) G		
Not environmentally friendly - higher CO ₂ emissions		
England, Scotland & Wales		
	EU Directive 2002/91/EC	



20-22 Bridge End, Leeds, LS1 4DJ
t: 0330 004 0050 e: hello@bettermove.co.uk
www.bettermove.co.uk