



95 Moor Lane  
York  
YO24 2QX

Offers in Excess of £740,000

bettermove



# Moor Lane York

Bettermove are proud to present this 5 bedroom detached house in York.

This property benefits from double glazing, and gas central heating throughout, with ample off road parking available, alongside a garage.

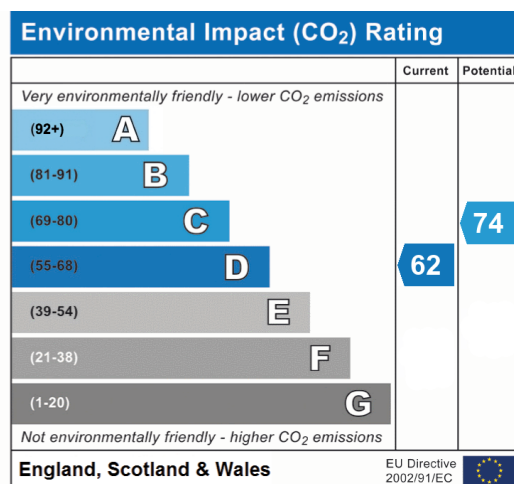
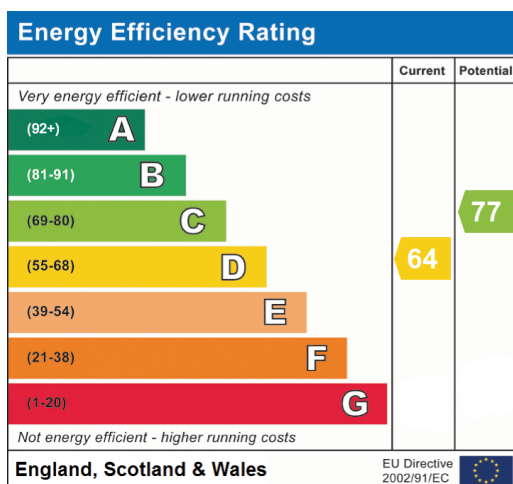
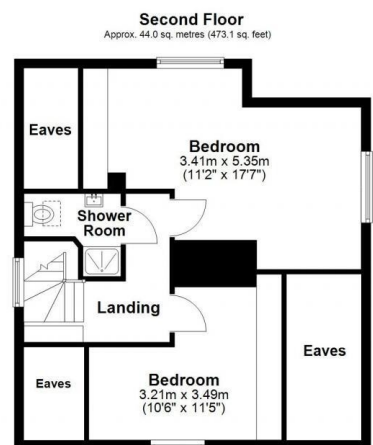
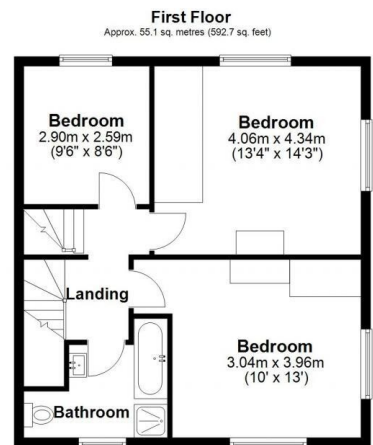
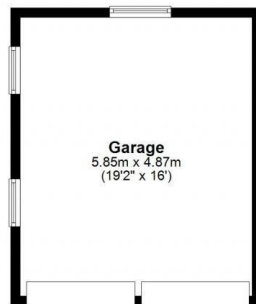
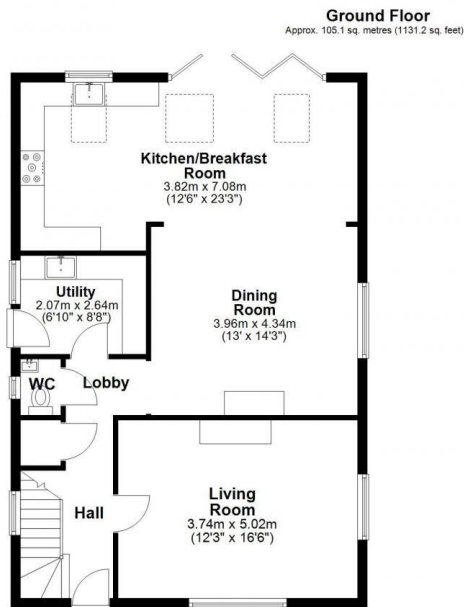
The council tax band is E.

The interior of this beautifully presented property is situated across three floors. The ground floor comprises a spacious, open plan, L-shaped kitchen/living/diner, with bi-fold doors to the rear, second reception room, utility and WC. The first floor consists of three double bedrooms, and the family bathroom. The further two double bedrooms, and a shower room, are located on the second floor. Externally, the property boasts a south facing rear garden, with open views of surrounding fields, perfect for enjoying the summer months.

Located in the popular city of York, the property is close to a range of amenities, including shops, supermarkets, restaurants, pubs, and schools. Excellent transport links can be found from York Train Station (2.4 miles), a variety of local bus routes, and quick access to the A64.

This exciting opportunity should not be missed! All enquiries can be made through Bettermove.









20-22 Bridge End, Leeds, LS1 4DJ  
t: 0330 004 0050 e: [hello@bettermove.co.uk](mailto:hello@bettermove.co.uk)  
[www.bettermove.co.uk](http://www.bettermove.co.uk)

Please Note: These particulars, whilst believed to be accurate are set out as a general outline only for guidance and do not constitute any part of an offer or contract. Intending purchasers should not rely on them as statements of representations of fact, but must satisfy themselves by inspection or otherwise as to their accuracy. No person in this firm's employment has the authority to make or give any representation or warranty in respect of the property.