



Moor Bottom Road  
Halifax  
West Yorkshire  
HX2

Offers In Excess Of £234,000

bettermove

# Moor Bottom Road Halifax

Bettermove are proud to present this 3 bedroom semi-detached house in Halifax.

This property benefits from double glazing, and gas central heating throughout, with off road parking available via the driveway.

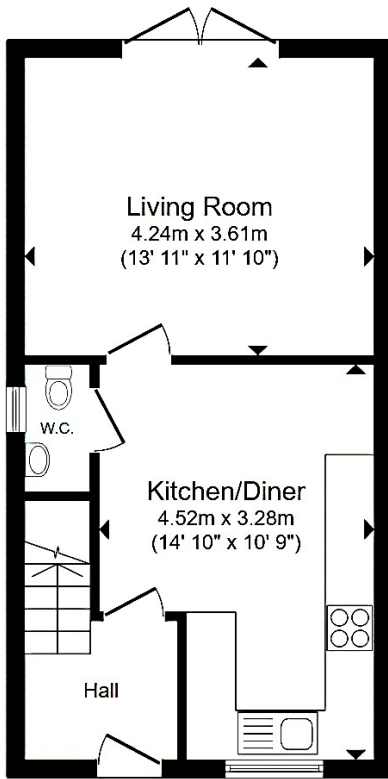
The council tax band is C.

The interior of this beautifully presented property is situated over three floors, and comprises a spacious living room, fitted kitchen/diner and WC on the ground floor. The first floor consists of two bedrooms, and a family bathroom, with the master bedroom, and private en-suite located on the second floor. The outside boasts a private rear garden, with both lawn and raised decking areas, perfect for enjoying the summer months.

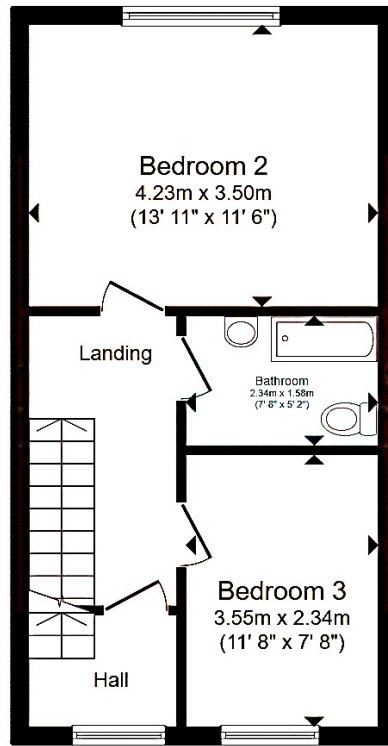
Located in the popular town of Halifax, the property is close to a range of amenities, including shops, supermarkets, restaurants, pubs, and schools. Excellent transport links can be found from Halifax Train Station (3.6 miles), a variety of local bus routes, and close access to the M62.

This exciting opportunity should not be missed! All enquiries can be made through Bettermove.

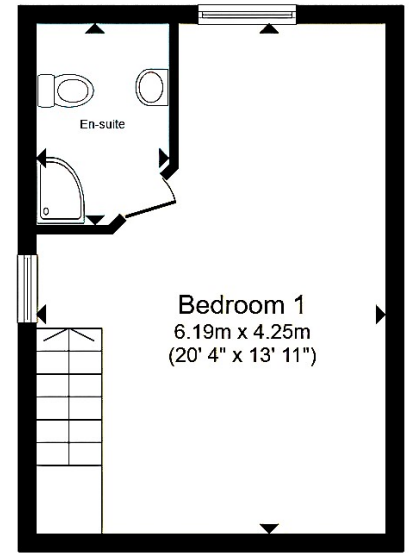




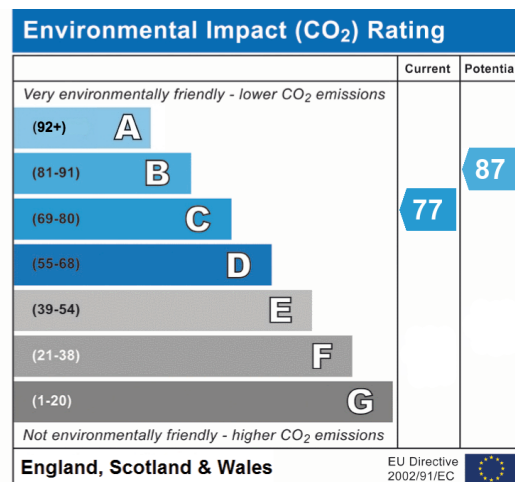
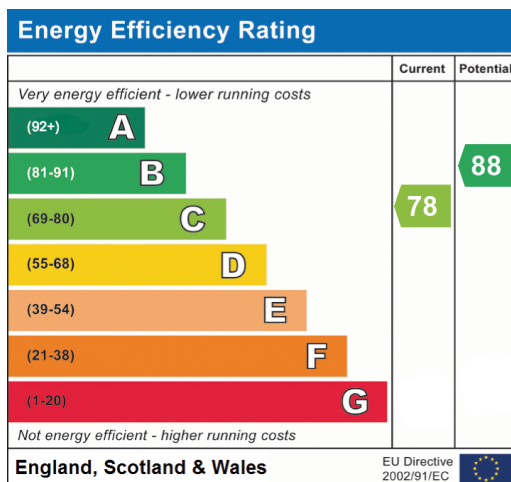
**Ground Floor**



**First Floor**



**Second Floor**







20-22 Bridge End, Leeds, LS1 4DJ  
t: 0330 004 0050 e: [hello@bettermove.co.uk](mailto:hello@bettermove.co.uk)  
[www.bettermove.co.uk](http://www.bettermove.co.uk)

Please Note: These particulars, whilst believed to be accurate are set out as a general outline only for guidance and do not constitute any part of an offer or contract. Intending purchasers should not rely on them as statements of representations of fact, but must satisfy themselves by inspection or otherwise as to their accuracy. No person in this firm's employment has the authority to make or give any representation or warranty in respect of the property.