



**Crabapple Close
Wymondham
Norfolk
NR18**

Offers In Excess Of £406,000

bettermove

Crabapple Close

Wymondham

Bettermove are proud to present this 5 bedroom detached house in Wymondham. Available with no forward chain.

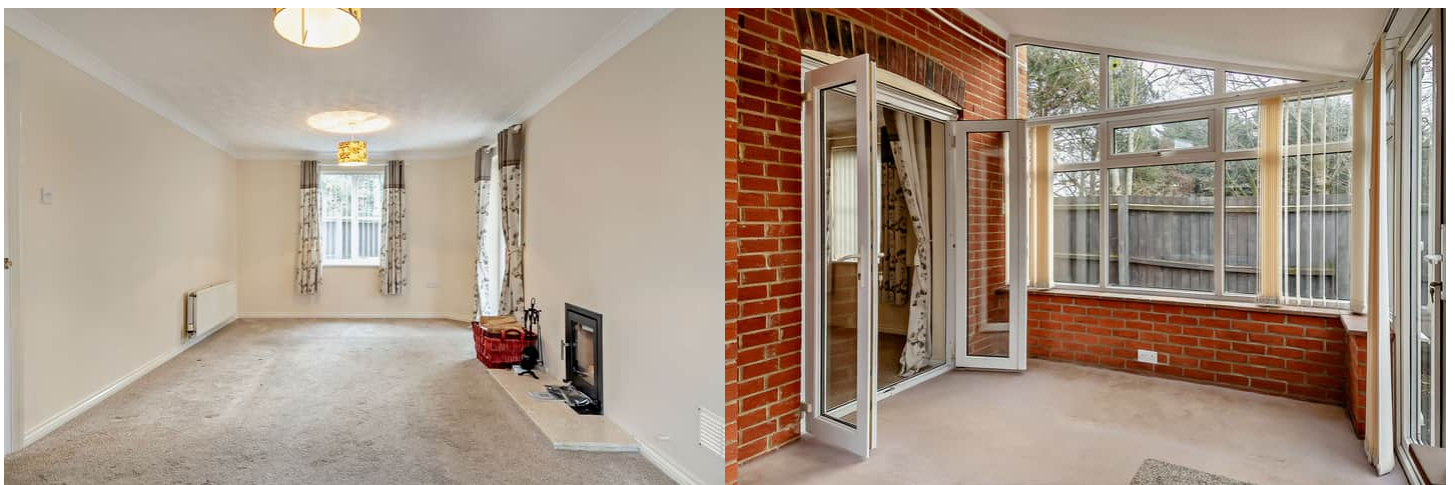
The property benefits from double glazing, gas central heating throughout and has off street parking available via the driveway .

The council tax band is D.

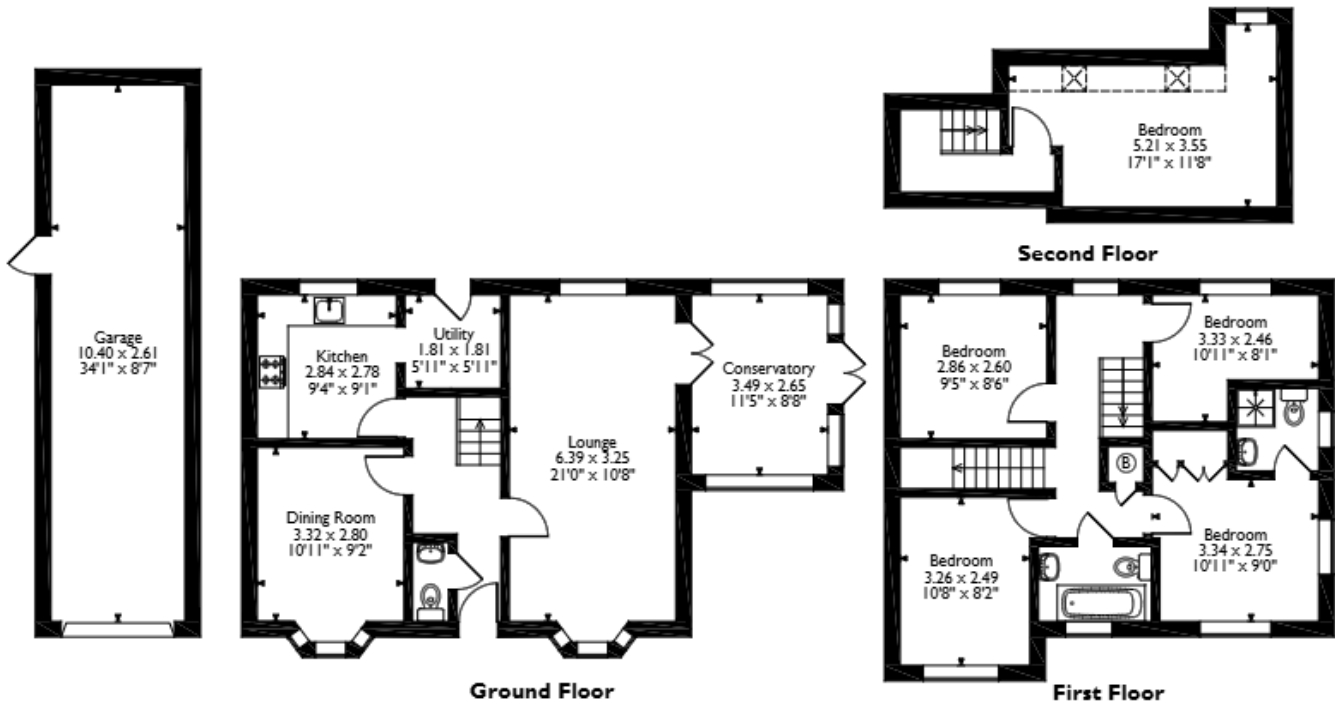
The interior of this well presented property comprises a spacious living room, dining room, fitted kitchen and the conservatory on the ground floor. The first floor consists of 5 bedrooms and the family bathroom. The exterior boasts a private rear garden, perfect for enjoying the summer months

Located in the popular town of Wymondham, the property is close to a range of amenities, including shops, supermarkets, restaurants, pubs and schools. Excellent transport connections can be found from Wymondham train station (1.5 miles), various bus routes and the A11.

This exciting opportunity should not be missed. All enquiries can be made through Bettermove.



Crabapple Close, Wymondham
 Approximate Gross Internal Area
 Main House = 133 Sq M/1431 Sq Ft
 Garage = 27 Sq M/291 Sq Ft
 Total = 160 Sq M/1722 Sq Ft



Please note that the location of doors, windows and other items are approximate and this floorplan is to be used for illustrative purposes only. Unauthorized reproduction is prohibited.

Energy Efficiency Rating		
	Current	Potential
Very energy efficient - lower running costs		
(92+) A		
(81-91) B		
(69-80) C		
(55-68) D		
(39-54) E		
(21-38) F		
(1-20) G		
Not energy efficient - higher running costs		
	69	78
England, Scotland & Wales		
	EU Directive 2002/91/EC	

Environmental Impact (CO ₂) Rating		
	Current	Potential
Very environmentally friendly - lower CO ₂ emissions		
(92+) A		
(81-91) B		
(69-80) C		
(55-68) D		
(39-54) E		
(21-38) F		
(1-20) G		
Not environmentally friendly - higher CO ₂ emissions		
	74	76
England, Scotland & Wales		
	EU Directive 2002/91/EC	



20-22 Bridge End, Leeds, LS1 4DJ
t: 0330 004 0050 e: hello@bettermove.co.uk
www.bettermove.co.uk