



**Whitfield Street
Birkenhead
Merseyside
CH42**

Offers In Excess Of £128,000

bettermove

Whitfield Street

Birkenhead

Bettermove are proud to present this 3 bedroom terraced house in Birkenhead, available with no forward chain.

This is currently a tenanted property and will be sold with tenants in situ for immediate investment. Rental yields can be obtained through Bettermove.

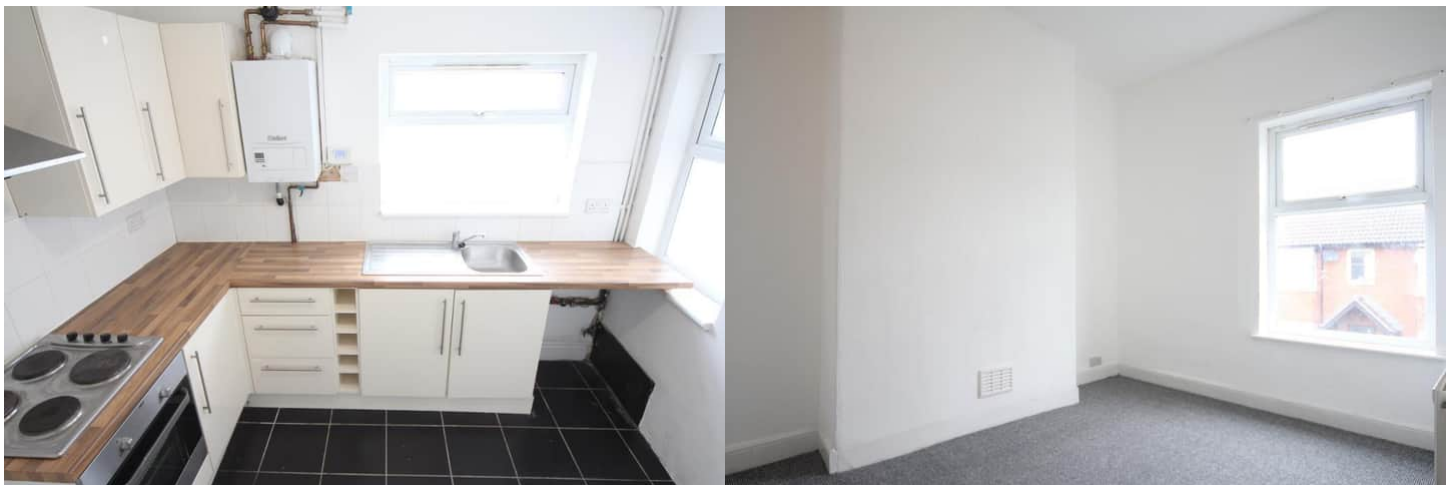
This property benefits from double glazing, and gas central heating throughout, with on street parking available.

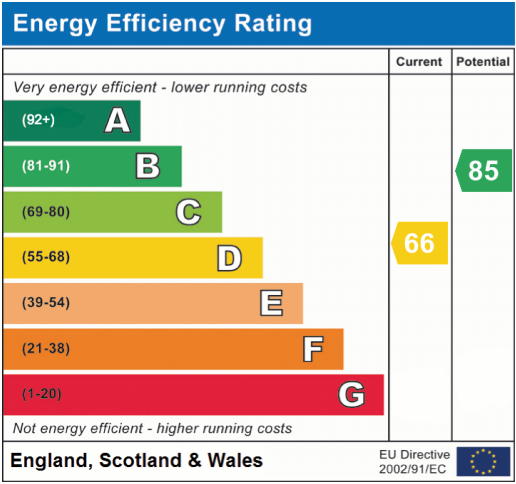
The council tax band is A.

The interior of this beautifully presented property comprises a spacious living room, dining room, and fitted kitchen on the ground floor. Upstairs, you'll find three bedrooms, including two doubles and a single, alongside the family bathroom. The exterior boasts a private rear garden, perfect for enjoying the summer months.

Located in the popular town of Birkenhead, the property is close to a range of amenities, including shops, supermarkets, restaurants, pubs, and schools. Excellent transport links can be found from Birkenhead Central Train Station, giving links on the MerseyRail, a variety of local bus routes, and quick access to the M53, and A41.

This exciting investment opportunity should not be missed! All enquiries can be made through Bettermove.







20-22 Bridge End, Leeds, LS1 4DJ
t: 0330 004 0050 e: hello@bettermove.co.uk
www.bettermove.co.uk