



Lynwood Gardens  
Croydon  
Surrey  
CR0

Offers In Excess Of £465,000

bettermove



# Lynwood Gardens

## Croydon

Bettermove are proud to present his 4 bedroom terraced house in Croydon.

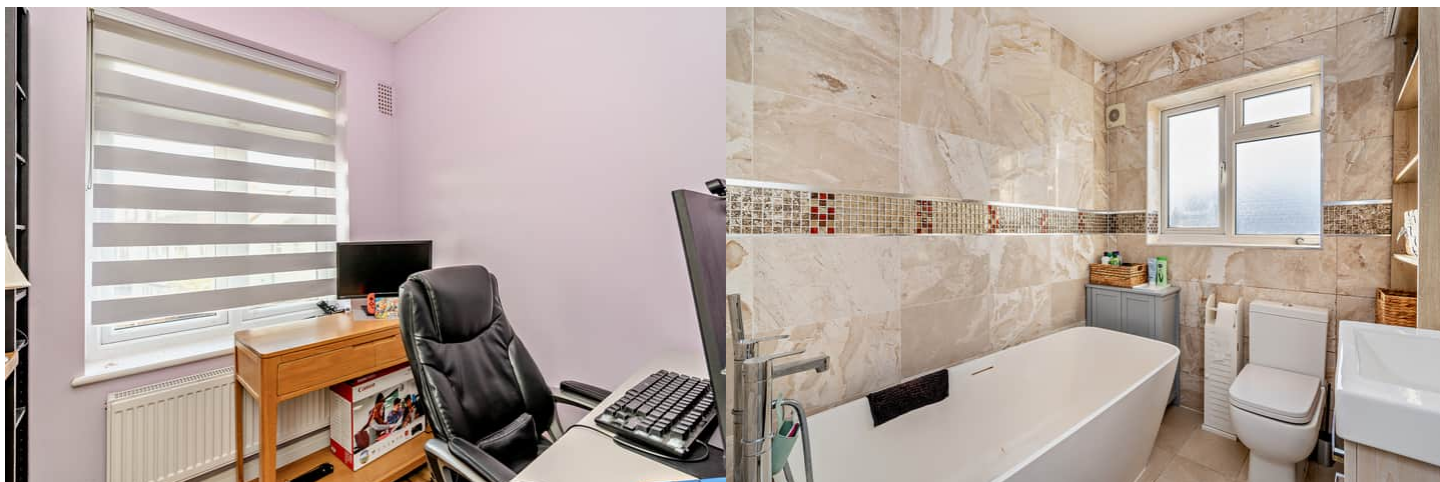
This property benefits from double glazing, and gas central heating throughout, with on street parking available.

The council tax band is D.

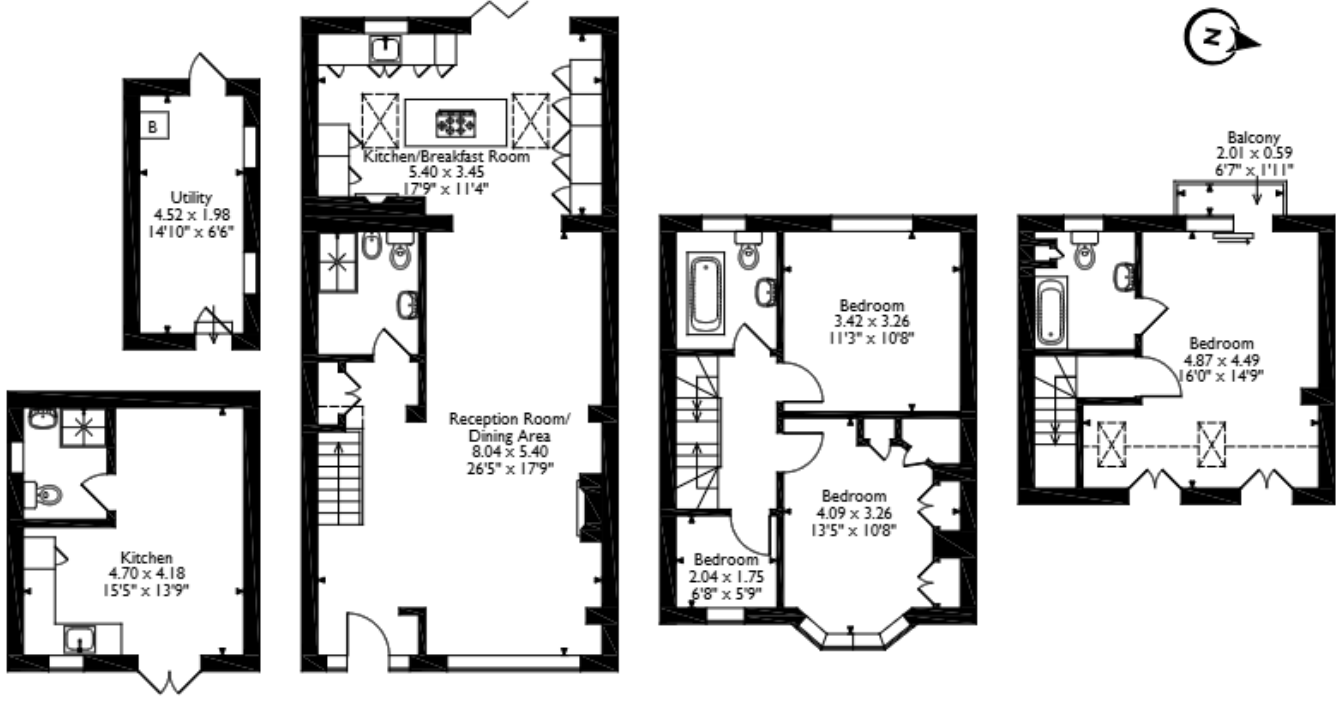
This beautifully presented property is situated across three floors, the ground floor comprises a spacious, open-plan living/dining area, shower room and fitted kitchen/breakfast room which also includes underground heating. Upstairs, you'll find three bedrooms, and a family bathroom, with the master bedroom, with private en-suite and a Juliette balcony located on the second floor. Externally, the property boasts a utility room, a separate outbuilding, which is ideal as an office space or additional storage, with a second shower room, and a private rear garden, perfect for enjoying the summer months.

Located in the popular town of Croydon, the property is close to a range of amenities, including shops, supermarkets, restaurants, pubs, and grammar schools. Excellent transport links can be found from Waddon Station (6 minute walk), a variety of local bus routes, and quick access to the A23.

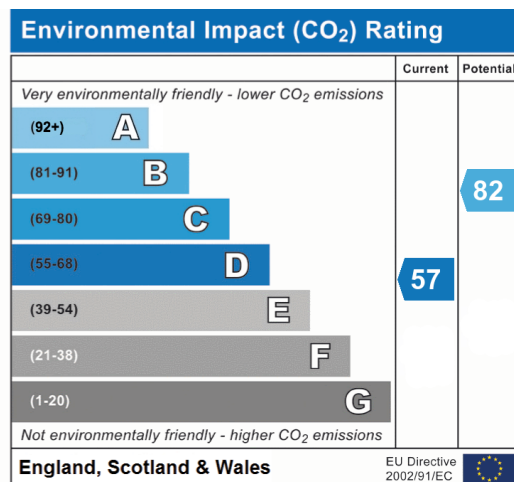
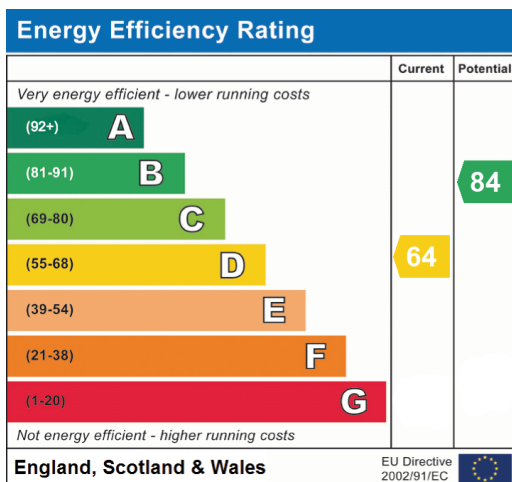
This exciting opportunity should not be missed! All enquiries can be made through Bettermove.



Lynwood Gardens, Croydon  
 Approximate Gross Internal Area  
 Main House = 126 Sq M/1357 Sq Ft  
 Outbuildings = 30 Sq M/323 Sq Ft  
 Total = 156 Sq M/1680 Sq Ft



Please note that the location of doors, windows and other items are approximate and this floorplan is to be used for illustrative purposes only. Unauthorized reproduction is prohibited.







20-22 Bridge End, Leeds, LS1 4DJ  
t: 0330 004 0050 e: [hello@bettermove.co.uk](mailto:hello@bettermove.co.uk)  
[www.bettermove.co.uk](http://www.bettermove.co.uk)