



Warwick Road  
Basingstoke  
Hampshire  
RG23

Offers in Excess of £272,000

bettermove



# Warwick Road

## Basingstoke

Bettermove are proud to present this 3 bedroom terraced house in Basingstoke.

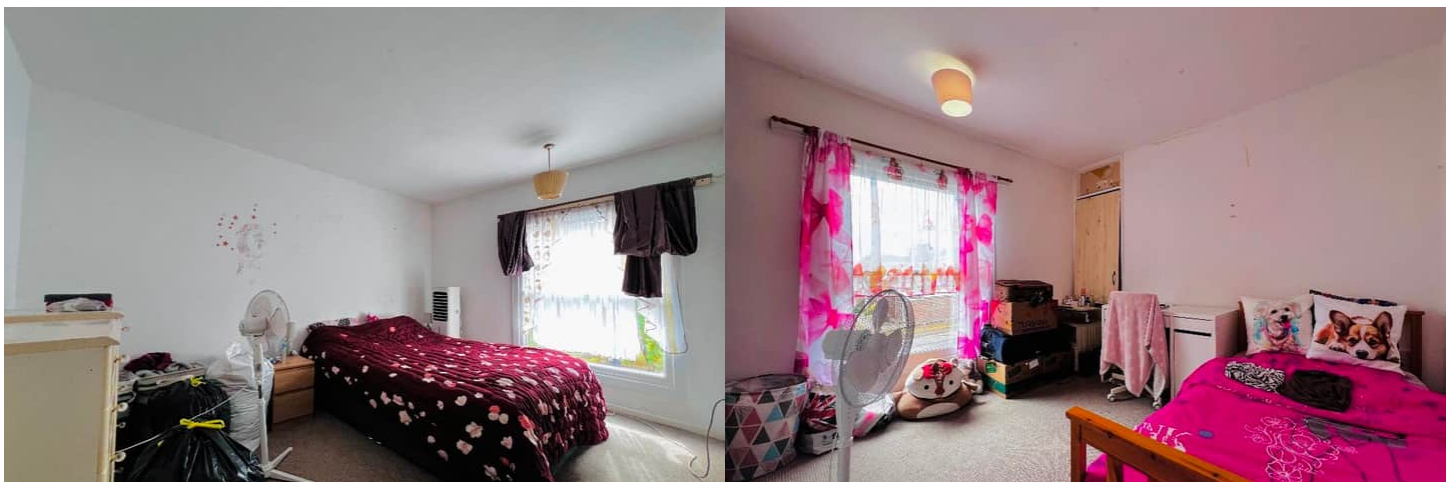
The property benefits from double glazing, central electric heating throughout and has on street parking available.

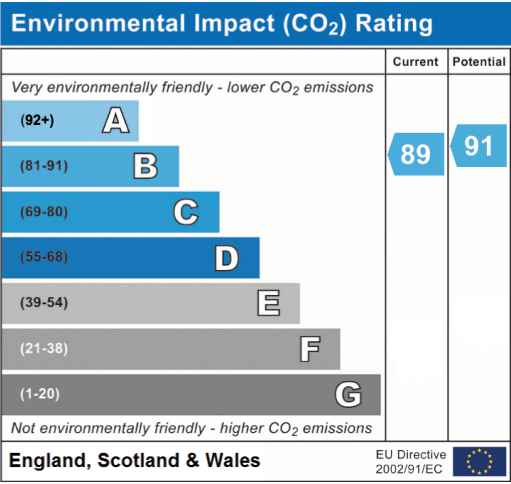
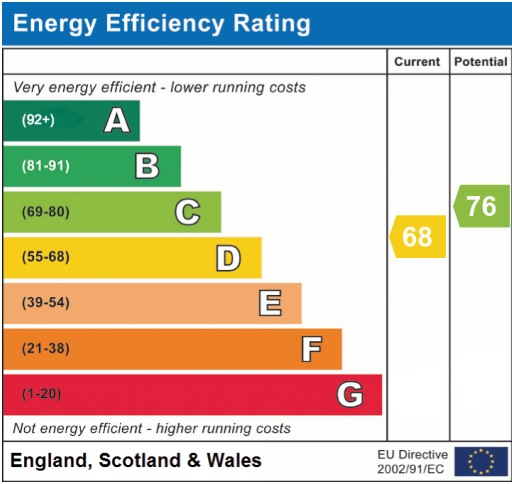
The council tax band is C.

The interior of this well presented property comprises a spacious living room, dining room and fitted kitchen on the ground floor. The first floor consists of 3 bedrooms and the family bathroom. The exterior boasts a private rear garden, perfect for enjoying the summer months.

Located in the popular town of Basingstoke, the property is close to a range of amenities, including shops, supermarkets, restaurants and pubs. Excellent transport connections can be found from Basingstoke train station (2.5 miles), various bus routes and the M3.

This exciting opportunity should not be missed. All enquiries can be made through Bettermove.









20-22 Bridge End, Leeds, LS1 4DJ  
t: 0330 004 0050 e: [hello@bettermove.co.uk](mailto:hello@bettermove.co.uk)  
[www.bettermove.co.uk](http://www.bettermove.co.uk)