



**Binfields Close
Chineham
Basingstoke
Hampshire
RG24**

Offers in Excess of £86,000

bettermove

Binfields Close Basingstoke

Bettermove are proud to present this 1 bedroom retirement flat in Chineham, welcoming over 55's and cash buyers only, available with no forward chain.

This property benefits from double glazing, and electric heating throughout, with parking available for residents.

The council tax band is A.

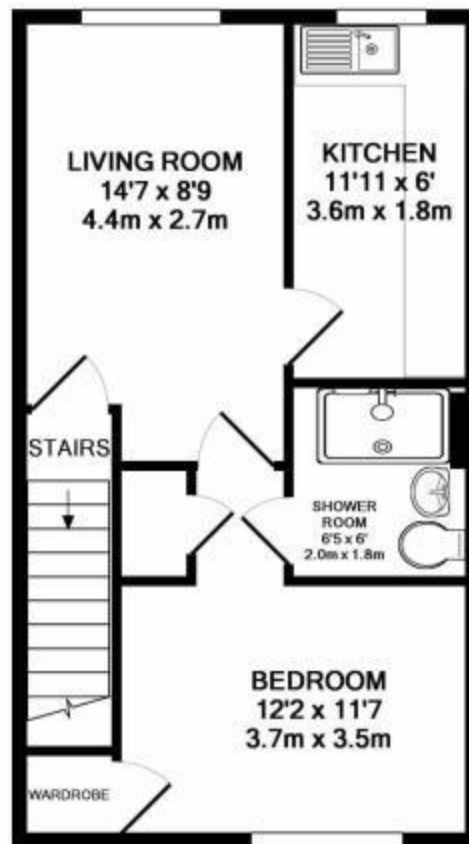
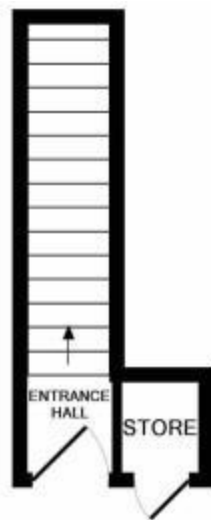
This is a leasehold property with 60 years remaining on the lease; the ground rent and service charge, combined, is £170.00 per month, including maintenance and buildings insurance.

The interior of this first floor property requires some modernisation throughout, and comprises a spacious living room, fitted kitchen, one double bedroom with built in wardrobes, and a shower room. Outside, the property boasts communal gardens, perfect for enjoying the summer months.

Located on a quiet cul-de-sac, in the village of Chineham, Basingstoke, the property is close to a range of amenities, including shops, supermarkets, restaurants, and pubs. Excellent transport links can be found from Basingstoke Train Station (2.8 miles), a variety of local bus routes, and quick access to the M3.

This exciting opportunity should not be missed! All enquiries can be made through Bettermove.





Energy Efficiency Rating		
	Current	Potential
Very energy efficient - lower running costs		
(92+) A		
(81-91) B		
(69-80) C		
(55-68) D	68	76
(39-54) E		
(21-38) F		
(1-20) G		
Not energy efficient - higher running costs		
England, Scotland & Wales	EU Directive 2002/91/EC	

Environmental Impact (CO ₂) Rating		
	Current	Potential
Very environmentally friendly - lower CO ₂ emissions		
(92+) A		
(81-91) B		
(69-80) C		
(55-68) D		61
(39-54) E	50	
(21-38) F		
(1-20) G		
Not environmentally friendly - higher CO ₂ emissions		
England, Scotland & Wales	EU Directive 2002/91/EC	

20-22 Bridge End, Leeds, LS1 4DJ
t: 0330 004 0050 e: hello@bettermove.co.uk
www.bettermove.co.uk