



South Street  
Bridport  
Dorset  
DT6

Offers in Excess of £418,000

bettermove



# South Street Bridport

Bettermove is proud to present this 3-bed, 2-bath Grade II\* listed detached property in Bridport, welcoming cash buyers only.

The Chantry is the oldest secular building in Bridport, largely constructed in the late 13th/early 14th centuries on the site of a watchtower believed to have existed since prior to the Norman Conquest. It became a priest's house in 1362 and was consecrated a place of worship until 1547 when Edward VI dissolved the chantries.

From then it was a private residence until the last tenant left in 1972. The property was restored by the Vivat Trust in 1980's, and since that time has been both a private home and holiday accommodation.

The Chantry boasts dual aspect in all the main rooms, gardens front and back and a wealth of historic features including a piscina, the columbarium and a garderobe.

The building is currently in need of some remedial work and modernisation. Recent expert historic building and drainage - surveys are available on request.

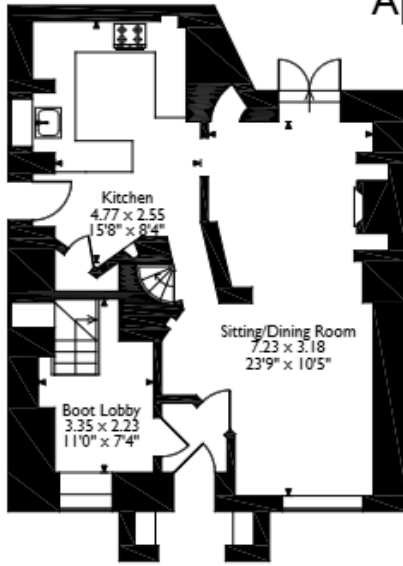
The Chantry represents a unique opportunity to own a beautiful Mediaeval home in the heart of vibrant Bridport,

This bustling Market town lies at the Western edge of Dorset on the Jurassic coast. Known as "The eventful town" it hosts a bi-weekly street market as well as many parades, fairs and festivals, and has a thriving arts and entertainment scene. The beach at West bay is 30 minutes on foot, and open space and countryside walks abound. It has excellent amenities including shops, supermarkets, restaurants, pubs and schools.

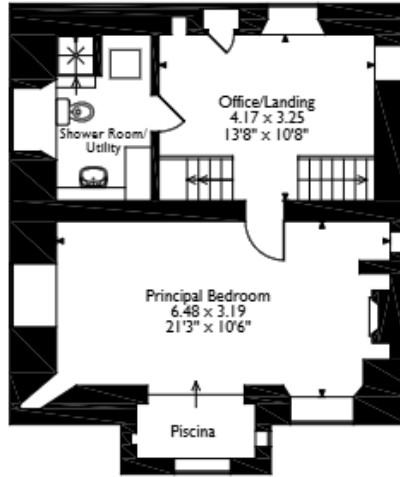
Connections to the rail network can be made at Dorchester South and Axminster.



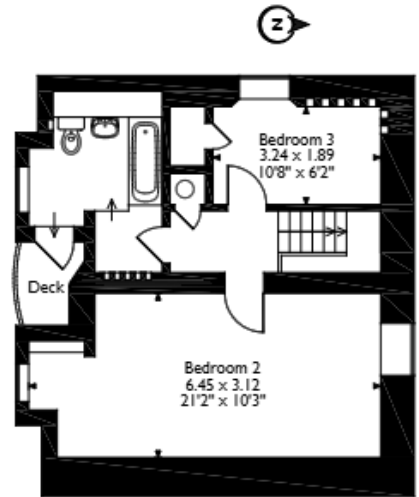
South Street, Bridport  
Approximate Gross Internal Area  
143 Sq M/1539 Sq Ft



**Ground Floor**



**First Floor**



**Second Floor**

Please note that the location of doors, windows and other items are approximate and this floorplan is to be used for illustrative purposes only. Unauthorized reproduction is prohibited.





20-22 Bridge End, Leeds, LS1 4DJ  
t: 0330 004 0050 e: [hello@bettermove.co.uk](mailto:hello@bettermove.co.uk)  
[www.bettermove.co.uk](http://www.bettermove.co.uk)