



Woodward Avenue
Hereford
HR2

Offers In Excess Of £225,000

bettermove

Woodward Avenue Hereford

Bettermove are proud to present this 3 bedroom semi-detached house in Hereford, available with no forward chain.

This is currently a tenanted property and can be sold tenanted or vacant on possession. Rental yields can be obtained through Bettermove.

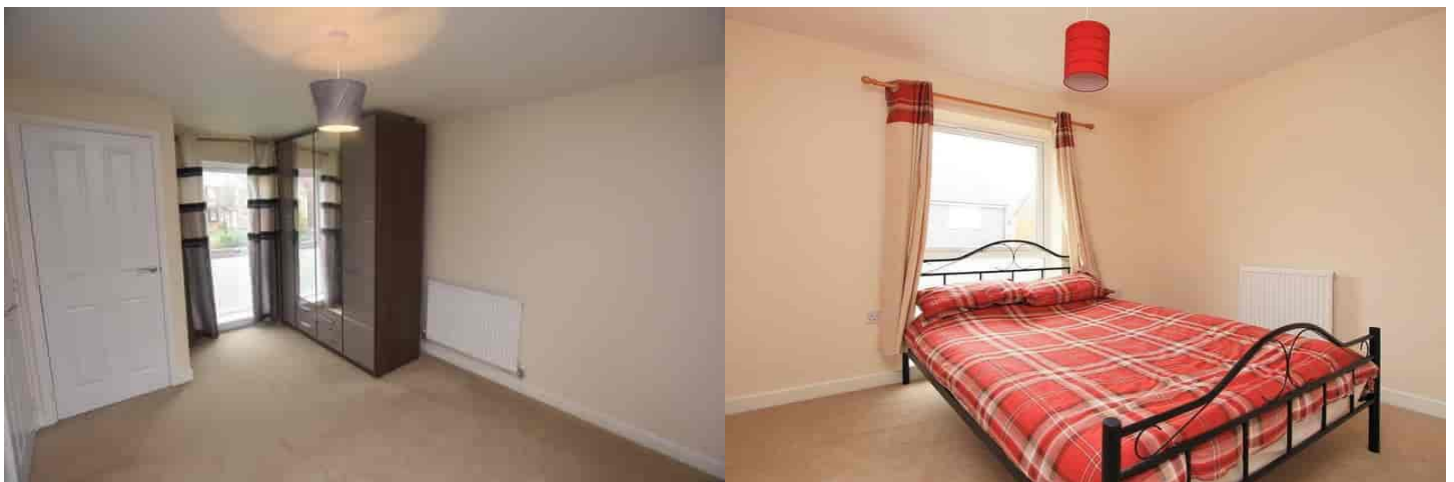
The property benefits from double glazing and gas central heating throughout, with off road parking available via the driveway.

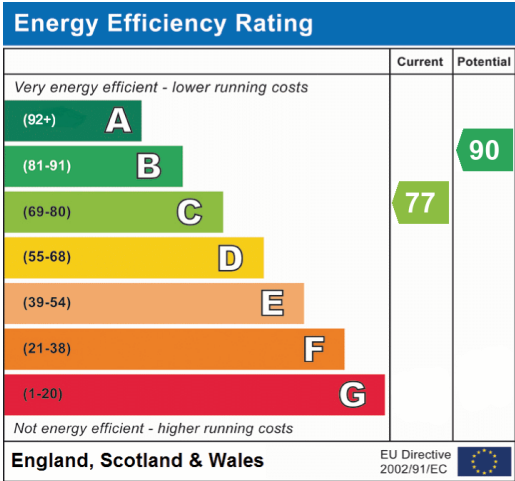
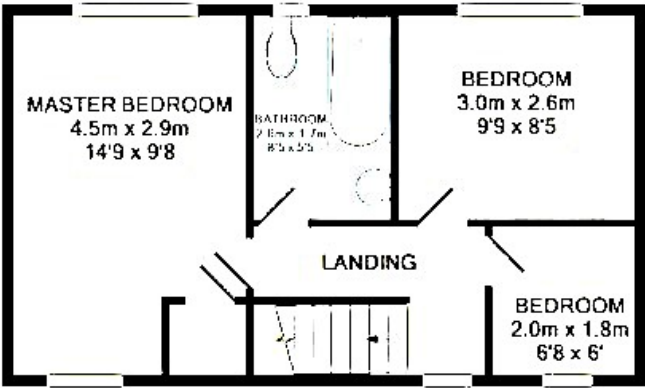
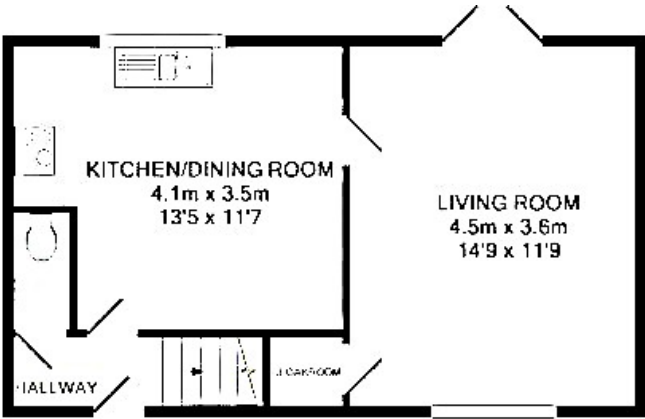
The council tax band is B.

The interior of this beautifully presented property comprises a spacious living room, open plan kitchen/diner and WC on the ground floor. Upstairs, you'll find three bedrooms, including two doubles and one single, and the family bathroom. The exterior boasts a private rear garden, with both lawn and patio areas, perfect for enjoying the summer months.

Located in the popular city of Hereford, the property is close to a range of amenities, including shops, supermarkets, restaurants, pubs and schools. Excellent transport links can be found from Hereford Railway Station, a variety of local bus routes, and quick access to the A49.

This exciting opportunity should not be missed! All enquiries can be made through Bettermove.







20-22 Bridge End, Leeds, LS1 4DJ
t: 0330 004 0050 e: hello@bettermove.co.uk
www.bettermove.co.uk