



**St Andrews Road  
Bridport  
Dorset  
DT6**

**Offers in Excess of £228,000**

**bettermove**



# St Andrews Road

## Bridport

Bettermove are proud to present this 2 bedroom Grade II Listed, semi-detached house in Bridport, available with no forward chain.

This property benefits from gas central heating throughout and single glazing, with on street parking available.

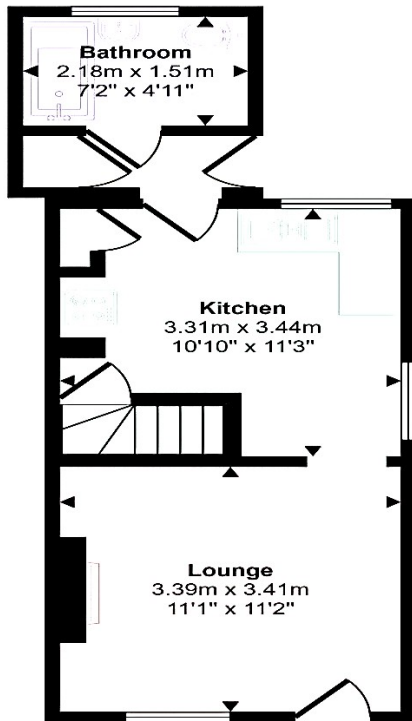
The council tax band is B.

This charming home offers a spacious and well-designed interior, perfect for comfortable family living. On the ground floor, you'll find a generous lounge ideal for relaxing or entertaining, a well-appointed fitted kitchen, and a modern family bathroom. Upstairs features two generously sized bedrooms, while a large loft room provides a potential third bedroom. Outside, the property benefits from a private rear courtyard, a lovely, low-maintenance space perfect for outdoor dining or unwinding during the warmer months.

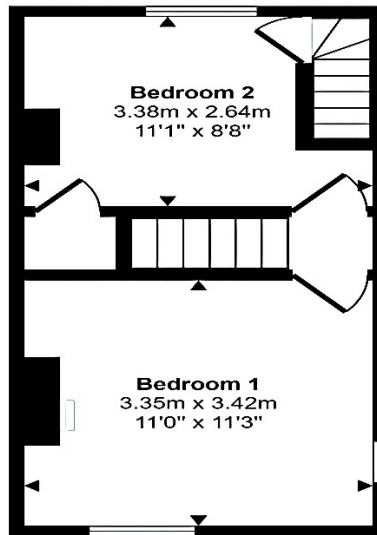
Located in the popular town of Bridport, the property is close to a range of amenities, including shops, supermarkets, restaurants, pubs, schools and a short distance to the seafront. Excellent transport links can be found from Maiden Newton Railway Station, local bus routes, and quick access to the A35.

This exciting opportunity should not be missed! All enquires can be made through Bettermove.

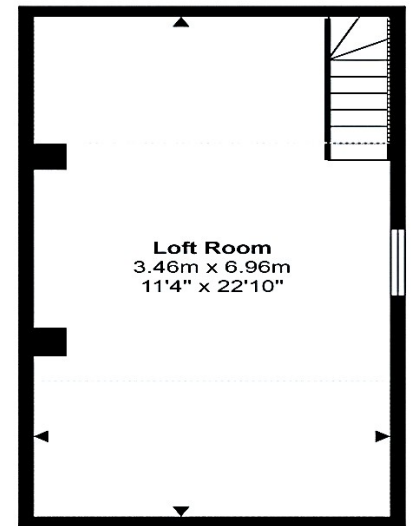




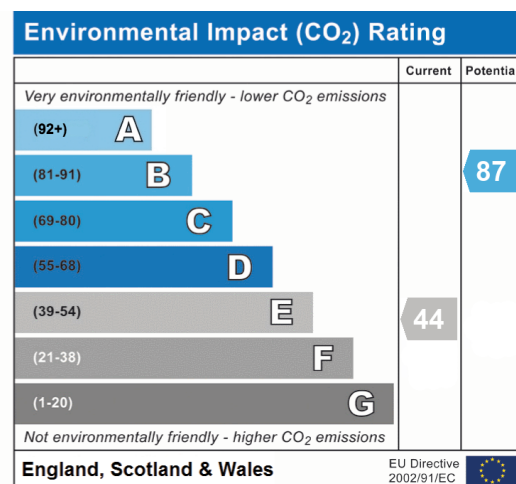
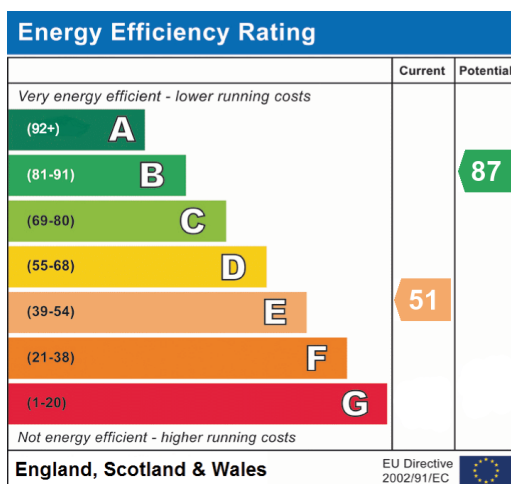
Ground Floor



First Floor



Second Floor







20-22 Bridge End, Leeds, LS1 4DJ  
 t: 0330 004 0050 e: [hello@bettermove.co.uk](mailto:hello@bettermove.co.uk)  
[www.bettermove.co.uk](http://www.bettermove.co.uk)