



**Chad Street  
Colne  
Lancashire  
BB8**

**Offers in Excess of £105,000**

**bettermove**

# Chad Street Colne

Bettermove are proud to present this 2 bedroom terraced house in Colne, available with no forward chain.

This property benefits from double glazing and gas central heating throughout, with on street parking available.

The council tax band is A.

This is a leasehold property with 883 years remaining on the lease.

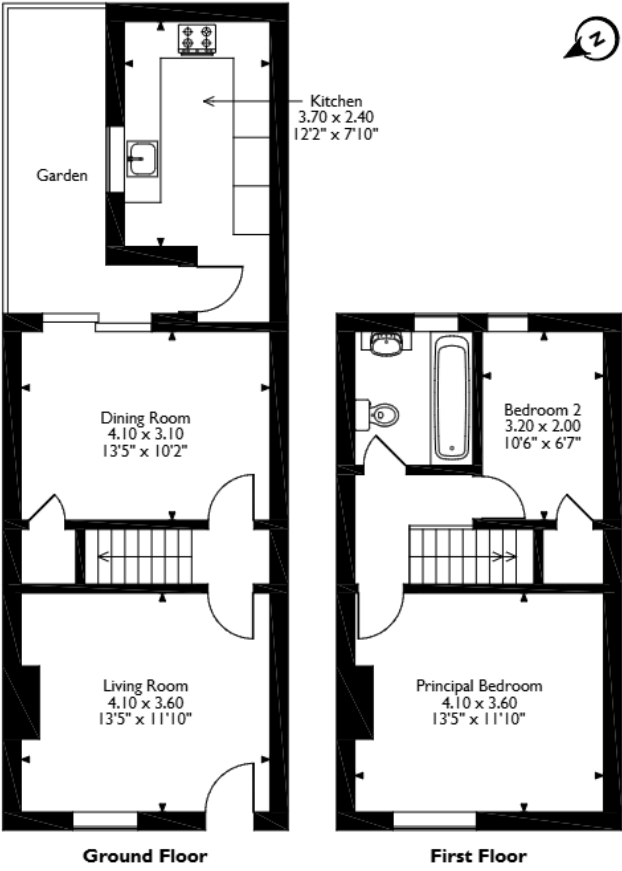
The interior of this beautifully presented property comprises a spacious living room, dining room and fitted kitchen. The first floor consists of two bedrooms and the family bathroom. The exterior boasts a private rear yard, perfect for enjoying the summer months.

Located in the popular town of Colne, the property is close to a range of amenities, including shops, supermarkets, restaurants, pubs and schools. Excellent transport links can be found from Colne Railway Station, a variety of local bus routes, and quick access to the M65.

This exciting opportunity should not be missed! All enquiries can be made through Bettermove.



Chad Street, Colne, Lancashire  
Approximate Gross Internal Area  
75 Sq M/807 Sq Ft



Please note that the location of doors, windows and other items are approximate and this floorplan is to be used for illustrative purposes only. Unauthorized reproduction is prohibited.

Energy Efficiency Rating		
	Current	Potential
Very energy efficient - lower running costs		
(92+) <b>A</b>		<b>86</b>
(81-91) <b>B</b>		
(69-80) <b>C</b>		
(55-68) <b>D</b>	<b>64</b>	
(39-54) <b>E</b>		
(21-38) <b>F</b>		
(1-20) <b>G</b>		
Not energy efficient - higher running costs		
England, Scotland & Wales		EU Directive 2002/91/EC

Environmental Impact (CO <sub>2</sub> ) Rating		
	Current	Potential
Very environmentally friendly - lower CO <sub>2</sub> emissions		
(92+) <b>A</b>		<b>84</b>
(81-91) <b>B</b>		
(69-80) <b>C</b>		
(55-68) <b>D</b>	<b>59</b>	
(39-54) <b>E</b>		
(21-38) <b>F</b>		
(1-20) <b>G</b>		
Not environmentally friendly - higher CO <sub>2</sub> emissions		
England, Scotland & Wales		EU Directive 2002/91/EC



20-22 Bridge End, Leeds, LS1 4DJ  
t: 0330 004 0050 e: [hello@bettermove.co.uk](mailto:hello@bettermove.co.uk)  
[www.bettermove.co.uk](http://www.bettermove.co.uk)