



**Broomfield Road
Welwyn
Hertfordshire
AL6**

Offers In Excess Of £440,000

bettermove

Broomfield Road Welwyn

Bettermove are proud to present this 3 bedroom semi-detached house in Welwyn.

This property benefits from double glazing and gas central heating throughout, with off road parking available via the driveway.

The council tax band is D.

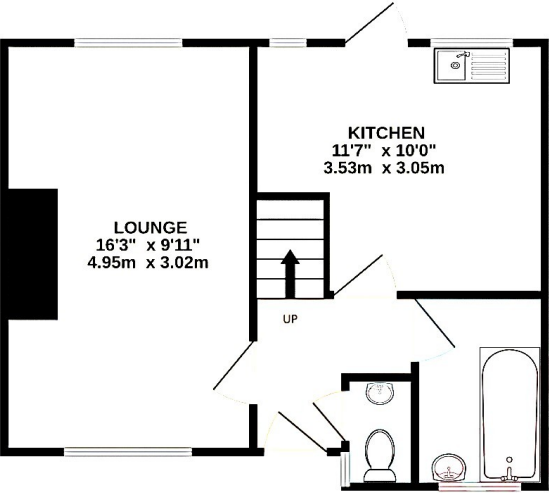
The interior of this well presented property comprises a spacious living room, fitted kitchen, family bathroom and separate WC on the ground floor. The first floor consists of two double bedrooms and a third bedroom, ideal for a study or child's bedroom. The exterior boasts a private rear garden, with both lawn and patio areas, perfect for enjoying the summer months.

Located in the quiet village of Welwyn, the property is close to a range of amenities, including shops, supermarkets, restaurants, pubs and schools. Excellent transport links can be found from Welwyn North Railway Station, a variety of local bus routes, and quick access to the A1(M).

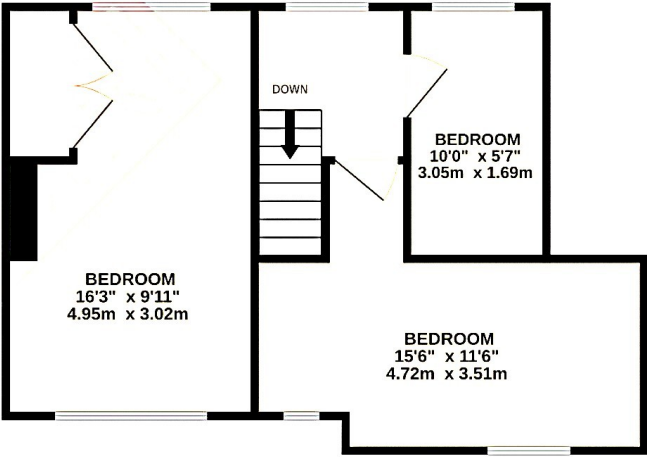
This exciting opportunity should not be missed! All enquiries can be made through Bettermove.



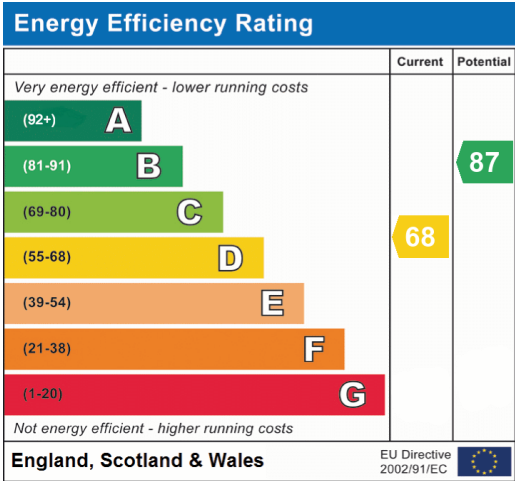
GROUND FLOOR
350 sq.ft. (32.5 sq.m.) approx.



1ST FLOOR
386 sq.ft. (35.8 sq.m.) approx.



TOTAL FLOOR AREA : 735 sq.ft. (68.3 sq.m.) approx.





20-22 Bridge End, Leeds, LS1 4DJ
t: 0330 004 0050 e: hello@bettermove.co.uk
www.bettermove.co.uk

Please Note: These particulars, whilst believed to be accurate are set out as a general outline only for guidance and do not constitute any part of an offer or contract. Intending purchasers should not rely on them as statements of representations of fact, but must satisfy themselves by inspection or otherwise as to their accuracy. No person in this firm's employment has the authority to make or give any representation or warranty in respect of the property.