



**Queens Square
Highbridge
Somerset
TA9 3EZ**

Offers In Excess Of £285,000

bettermove

Queens Square Highbridge

A MODERN and SPACIOUS home in Highbridge with AMPLE gardens/outdoor space, MUST be viewed to appreciate! Call for details!

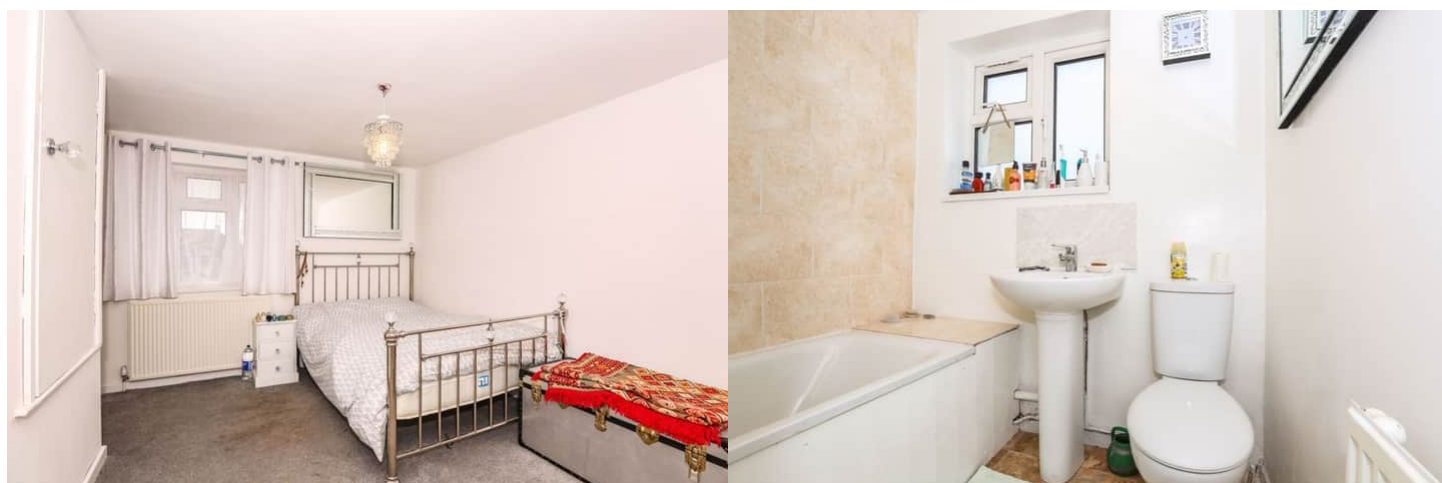
Bettermove are pleased to present this charming five bedroom end of terrace house for sale in Highbridge.

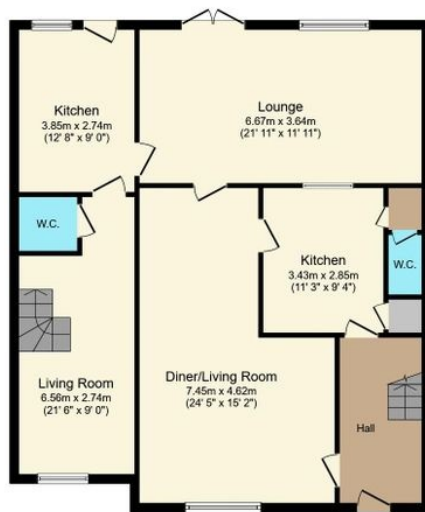
The property benefits from double glazing and gas central heating throughout.

The interior of this beautifully-presented property comprises a spacious living/dining room, additional lounge, fitted kitchen and WC on the ground floor. The first floor consists of four bedrooms and the family bathroom. There is an additional kitchen and living room on the ground floor with separate stairs to the first floor where one bedroom with an en suite can be found. The exterior boasts both front and rear gardens with ample lawn and patio areas in the rear garden, perfect for enjoying the summer months.

Situated in the sought after town of Highbridge, the property is close to a wide range of local amenities, including supermarkets, shops, restaurants and pubs. Transport connections can be found from Highbridge & Burham train station, the A38 and M5.

This exciting opportunity is not to be missed and all enquiries can be made through Bettermove on 0330 004 0050.





Ground Floor

104.0 sq. m. (1,119 sq. ft.)



First Floor

71.0 sq. m. (764 sq. ft.)

This floor plan is for illustrative purposes only. It is not drawn to scale. Any measurements, floor areas (including any total floor area), openings and orientation are approximate. No details are guaranteed, they cannot be relied upon for any purpose and they do not form part of any agreement. No liability is taken for any error, omission or misstatement. A party must rely upon its own inspection(s).



20-22 Bridge End, Leeds, LS1 4DJ
t: 0330 004 0050 e: hello@bettermove.co.uk
www.bettermove.co.uk