



St Johns Road  
Drifffield  
East Riding of Yorkshire  
YO25

Offers in Excess of £125,000

bettermove

# St Johns Road Driffield

Bettermove are proud to present this 3 bedroom terraced house in Driffield, available with no forward chain.

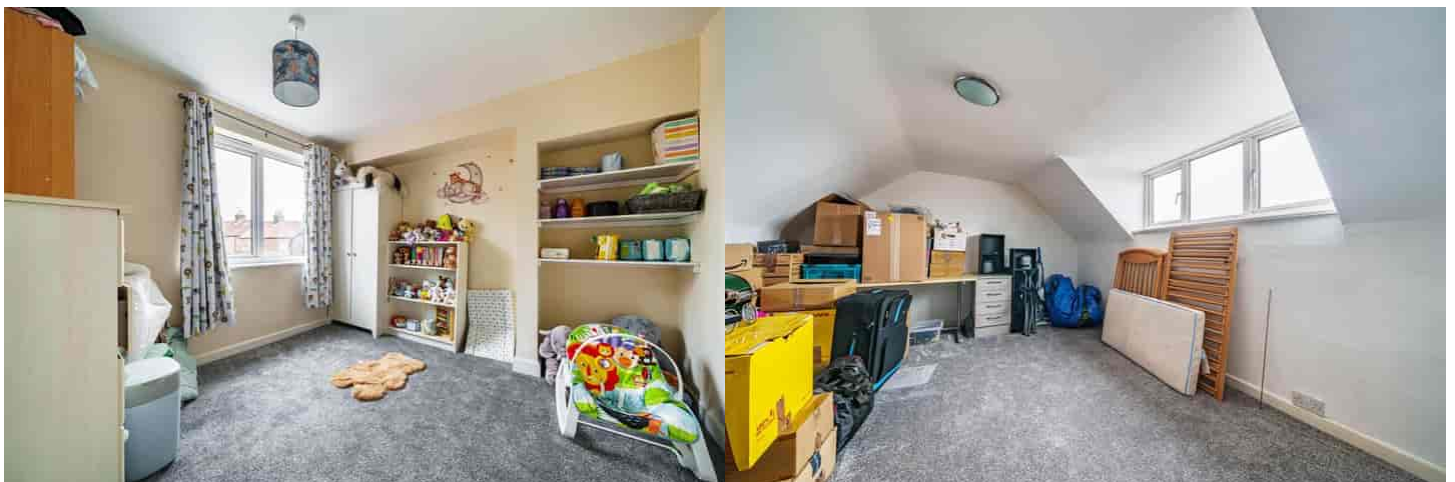
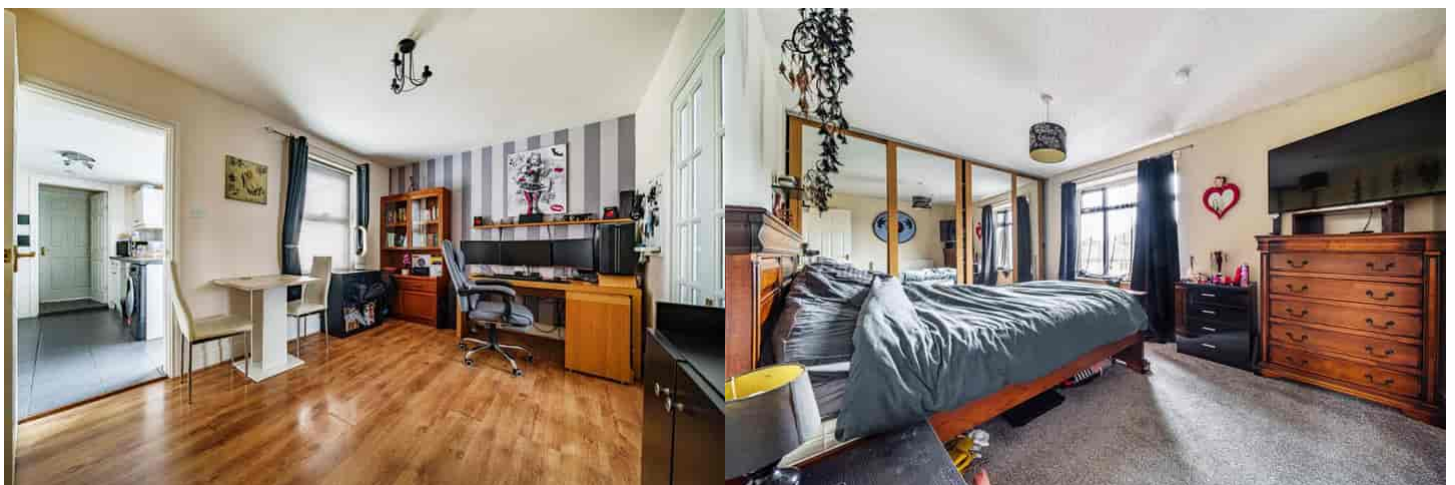
This property benefits from double glazing and gas central heating throughout, with on street parking available.

The council tax band is A.

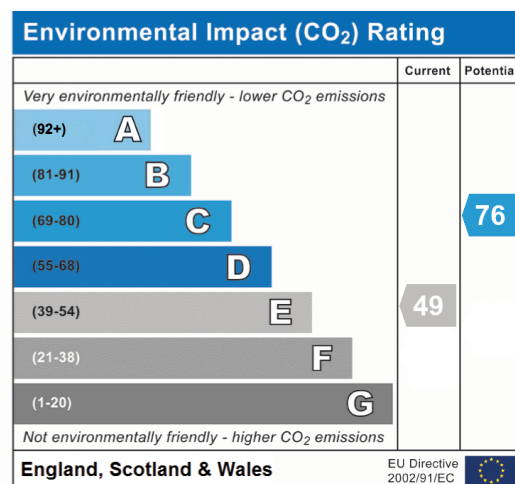
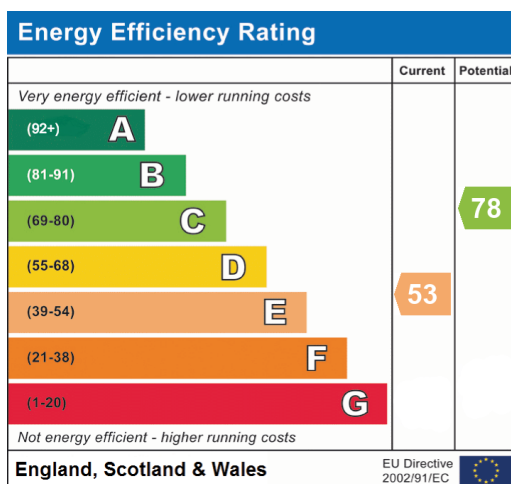
The interior of this beautifully presented property comprises a spacious living room, dining room, fitted kitchen and family bathroom on the ground floor, with access to the cellar. The first floor consists of two bedrooms, with the third bedroom located on the second floor. The exterior boasts a private courtyard, as well as access to a communal garden, mainly laid lawn, perfect for enjoying the summer months.

Located in the popular town of Driffield, which has been named as one of The Sunday Times' "Best Places to live in the North", the property is close to a range of amenities, including shops, supermarkets, restaurants, pubs and schools. Excellent transport links can be found from Driffield Railway Station, a variety of local bus routes, and quick access to the A614.

This exciting opportunity should not be missed! All enquiries can be made through Bettermove.









20-22 Bridge End, Leeds, LS1 4DJ  
 t: 0330 004 0050 e: [hello@bettermove.co.uk](mailto:hello@bettermove.co.uk)  
[www.bettermove.co.uk](http://www.bettermove.co.uk)