



Manifold Road
Scunthorpe
Lincolnshire
DN16

Offers in Excess of £68,000

bettermove

Manifold Road Scunthorpe

Bettermove are proud to present this 2 bedroom Park Home in Scunthorpe, welcoming over 45's only and available with no forward chain.

This property benefits from double glazing and LPG gas heating, with off road parking available next to the property.

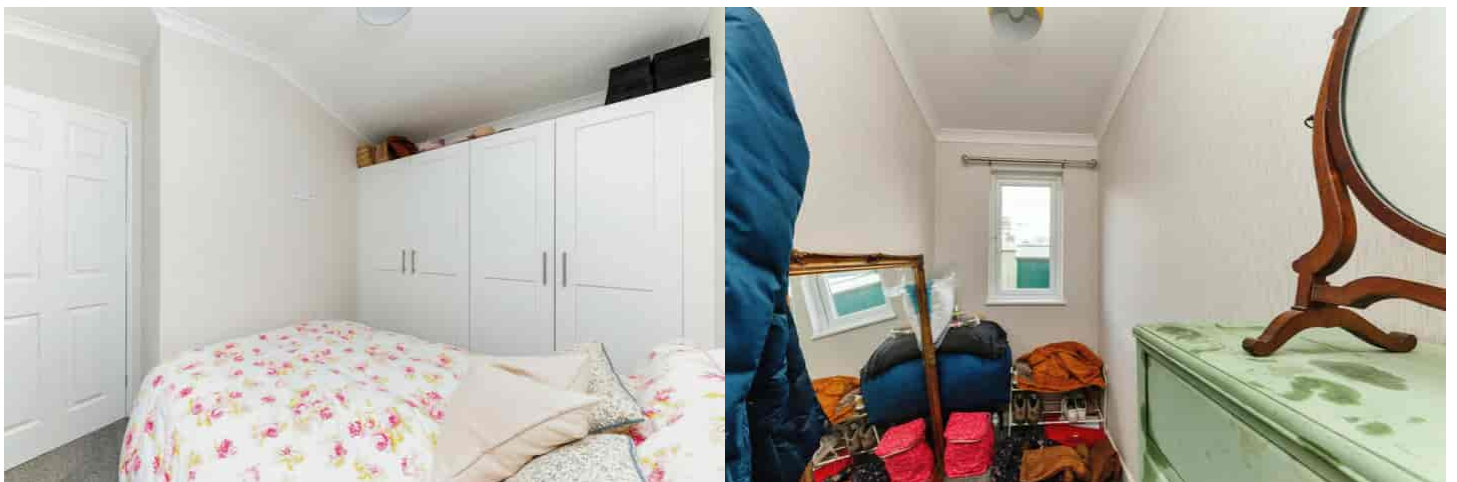
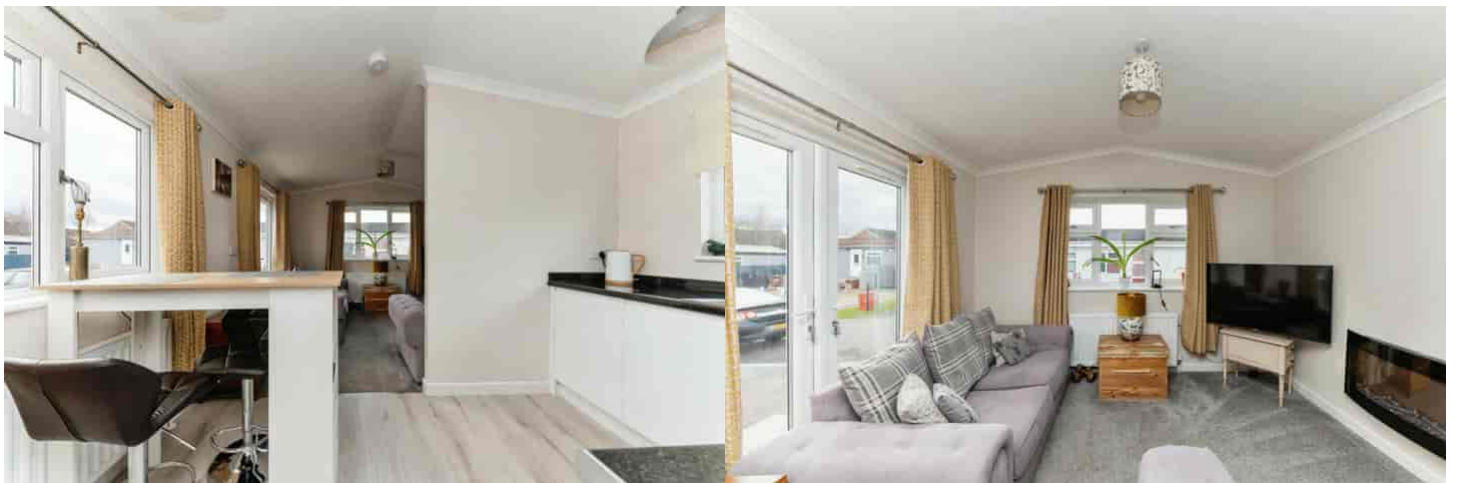
This council tax band is A.

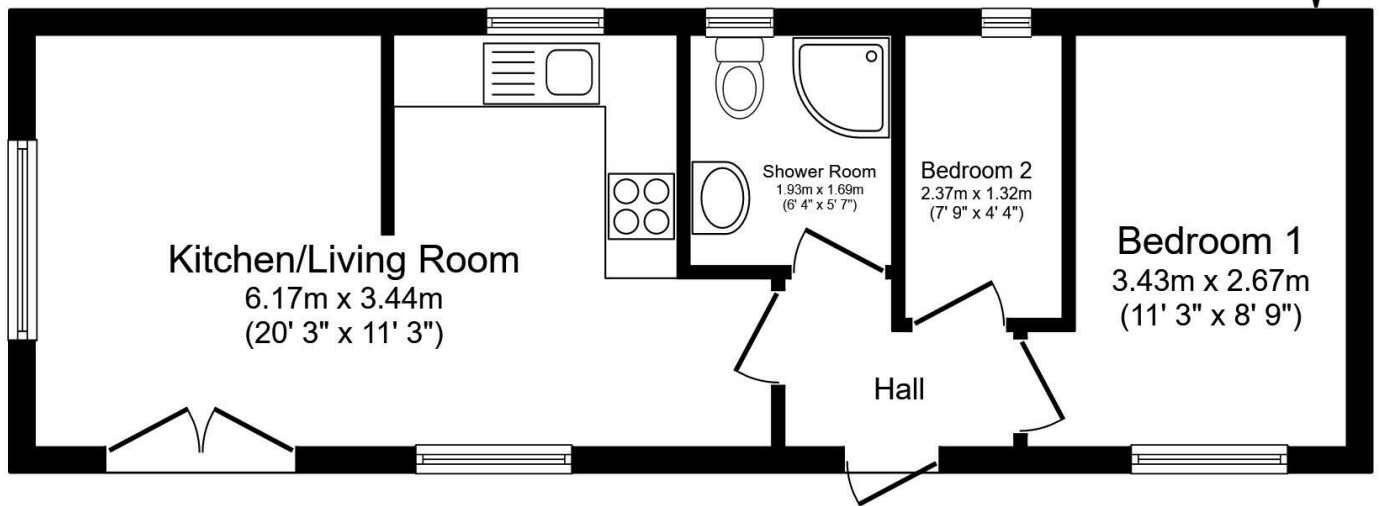
This is a Virtual Freehold property; with a monthly site fee of £189.00.

The interior of this beautifully presented property comprises a spacious, open plan living/kitchen area, shower room and two bedrooms. The exterior boasts a separate storage shed, and a small, raised patio, perfect for enjoying the summer months.

Located in the popular town of Scunthorpe, the property is close to a range of amenities, including shops, supermarkets, restaurants and pubs. Excellent transport links can be found from Scunthorpe Railway Station, a variety of local bus routes, and quick access to the M180.

This exciting opportunity should not be missed! All enquiries can be made through Bettermove.





Total floor area 37.6 sq.m. (405 sq.ft.) approx

This floor plan is for illustrative purposes only. It is not drawn to scale. Any measurements, floor areas (including any total floor area), openings and orientation are approximate. No details are guaranteed, they cannot be relied upon for any purpose and they do not form part of any agreement. No liability is taken for any error, omission or misstatement. A party must rely upon its own inspection(s). Powered by www.focalagent.com



20-22 Bridge End, Leeds, LS1 4DJ
t: 0330 004 0050 e: hello@bettermove.co.uk
www.bettermove.co.uk