



**Balmoral Road
Sutton At Hone
Dartford
Kent
DA4 9EY**

Offers in Excess of £440,000

bettermove

Balmoral Road

Dartford

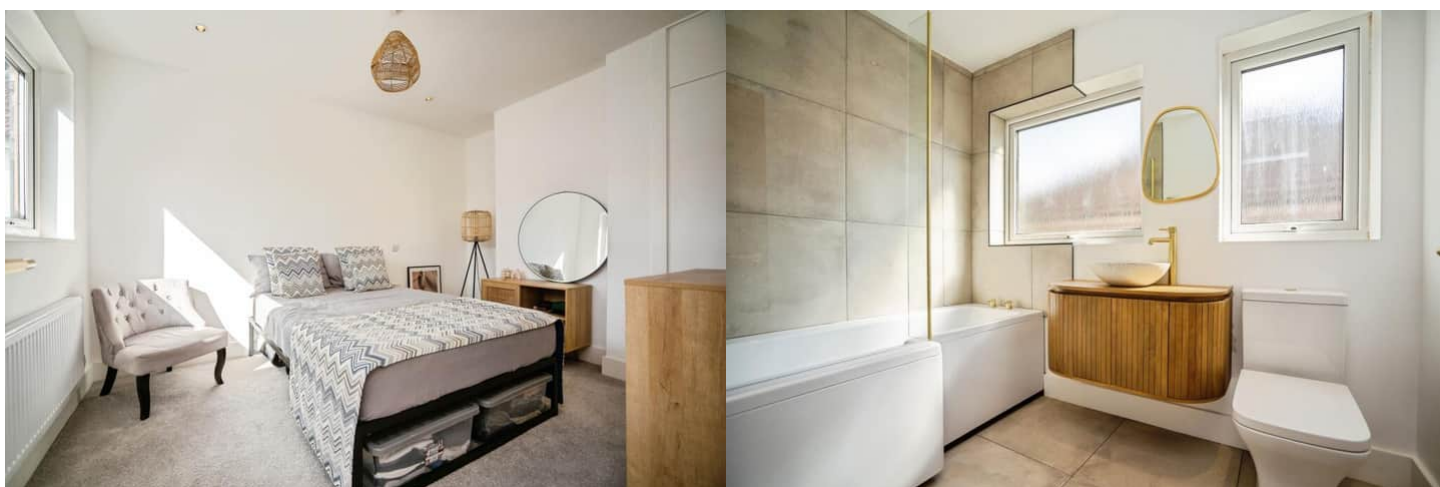
Bettermove are proud to present this impressive 3 bedroom semi-detached bungalow in Sutton At Hone.

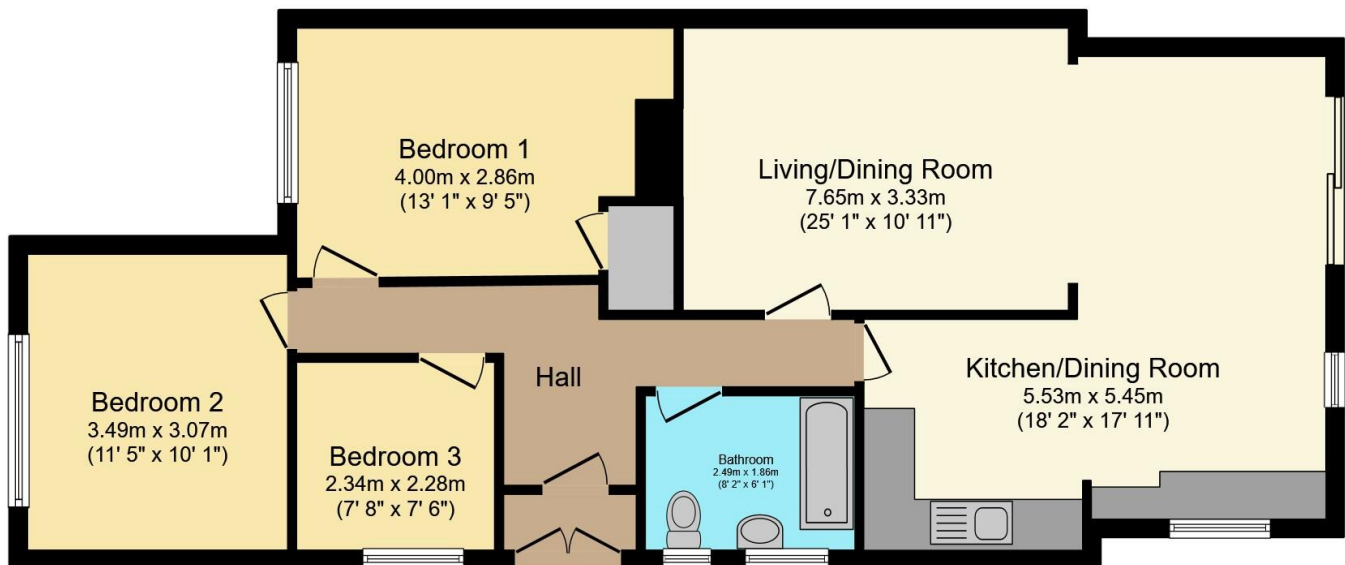
The property benefits from double glazing, gas central heating throughout and has ample off street parking available. The council tax band is D.

The interior of this beautifully presented property has been renovated from top to bottom which comprises a spacious and extended kitchen/ dining room and lounge area with bi-fold doors to the garden. There are three good sized bedrooms and the modern family bathroom. The exterior of the property boasts from a private rear garden, a garage and garden room for extra storage space.

Located within the rural and peaceful setting of Sutton At Hone, the property is close to a range of amenities, including shops, supermarkets, restaurants and pubs. Excellent transport connections can be found from Farningham Road Train Station which provides easy access to London and both the M25 and A2 are within a short drive.

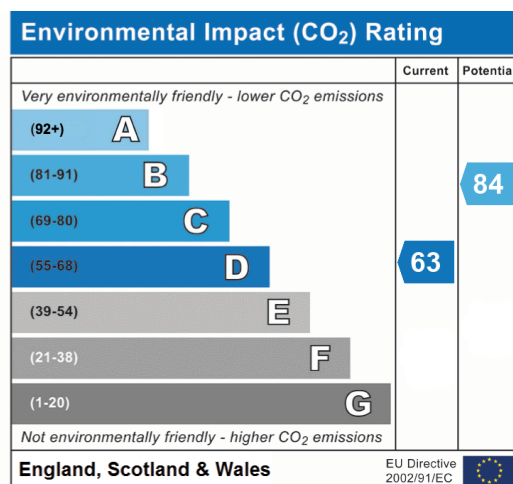
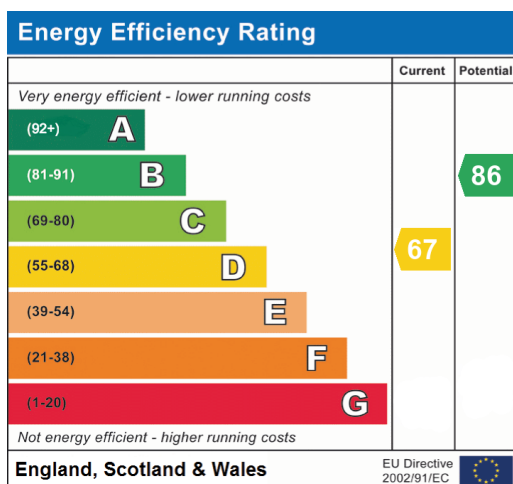
This exciting opportunity should not be missed! All enquiries can be made through Bettermove on 0330 004 0050.





Total floor area 83.7 sq.m. (901 sq.ft.) approx

This floor plan is for illustrative purposes only. It is not drawn to scale. Any measurements, floor areas (including any total floor area), openings and orientation are approximate. No details are guaranteed, they cannot be relied upon for any purpose and they do not form part of any agreement. No liability is taken for any error, omission or misstatement. A party must rely upon its own inspection(s). Plan produced for Purplebricks. Powered by www.focalagent.com





20-22 Bridge End, Leeds, LS1 4DJ
 t: 0330 004 0050 e: hello@bettermove.co.uk
www.bettermove.co.uk

Please Note: These particulars, whilst believed to be accurate are set out as a general outline only for guidance and do not constitute any part of an offer or contract. Intending purchasers should not rely on them as statements of representations of fact, but must satisfy themselves by inspection or otherwise as to their accuracy. No person in this firm's employment has the authority to make or give any representation or warranty in respect of the property.