



**Berwick Avenue
Chelmsford
Essex
CM1 4AW**

Offers in Excess of £555,000

bettermove

Berwick Avenue

Chelmsford

Bettermove are proud to present this 4 bedroom Detached House in Chelmsford occupying a generous corner plot position and offers the potential for further development.

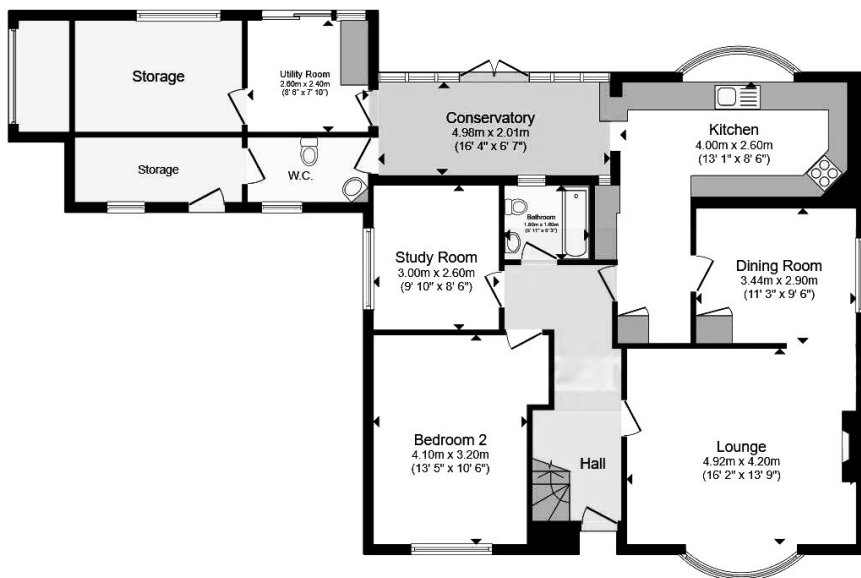
The property benefits from double glazing, gas central heating throughout and has ample off street parking available via the driveway. The council tax band is E.

The interior of this property comprises generously sized living areas, ideal for both unwinding and entertaining, along with two well-proportioned bathrooms. What truly distinguishes this home, however, is its exceptional scope for expansion. Planning permission has already been approved, and initial groundwork is underway—providing a head start for those looking to customise and grow the space. Perfectly suited for buyers eager to create a home that reflects their personal style, it's nestled in the quiet, sought-after area of Broomfield with convenient access to Chelmsford city centre, top-rated schools, and a range of local amenities. With generous space, significant development potential, and the rare opportunity to design a home exactly to your taste, this property is a standout choice for anyone looking to embark on a rewarding renovation project.

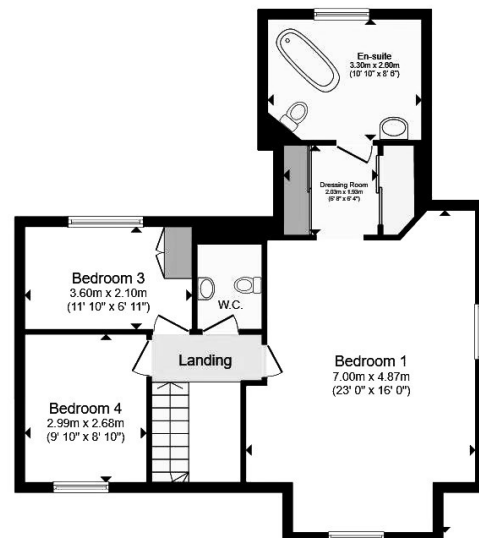
Located in the popular residential area of Broomfield, the property is close to a range of amenities, including shops, supermarkets, restaurants and pubs. Excellent transport connections can be found from many local bus routes providing easy access into Chelmsford City Centre and Chelmsford Train Station.

This exciting opportunity should not be missed! All enquiries can be made through Bettermove on 0330 004 0050.



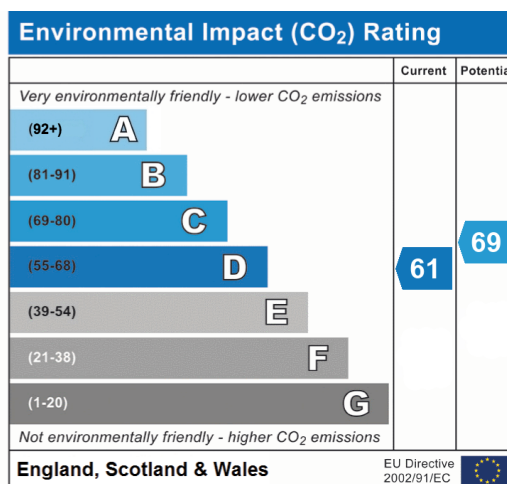
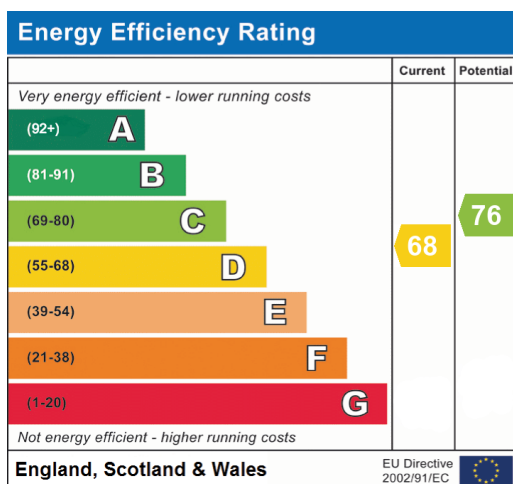


Ground Floor



First Floor

Total floor area 202.1 sq.m. (2,175 sq.ft.) approx





20-22 Bridge End, Leeds, LS1 4DJ
t: 0330 004 0050 e: hello@bettermove.co.uk
www.bettermove.co.uk