



**Capstone Place
Bournemouth
Dorset
BH8**

Offers In Excess Of £255,000

bettermove

Capstone Place

Bournemouth

Bettermove are proud to present this 3 bedroom semi-detached house in Bournemouth, available with no forward chain.

This property benefits from double glazing and gas central heating throughout, with on road parking available, permit free.

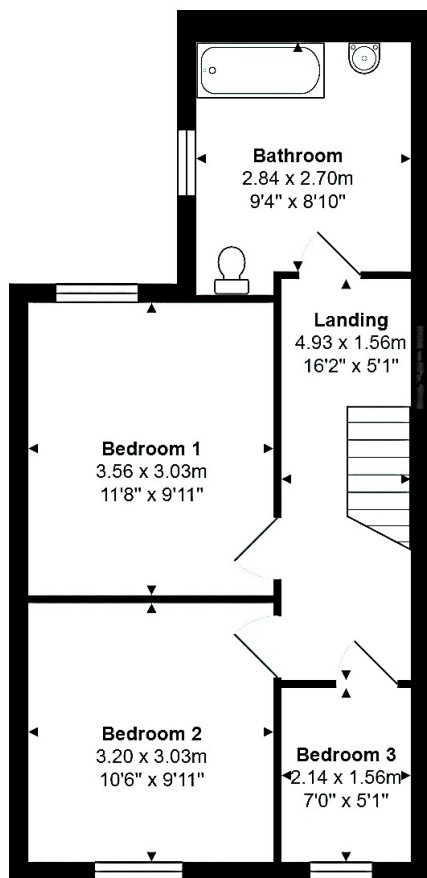
The council tax band is C.

The interior of this well presented property comprises a spacious living room, dining room and fitted kitchen on the ground floor. The first floor consists of two double bedrooms, one smaller bedrooms and the family bathroom. The exterior boasts a small, rear low maintenance yard.

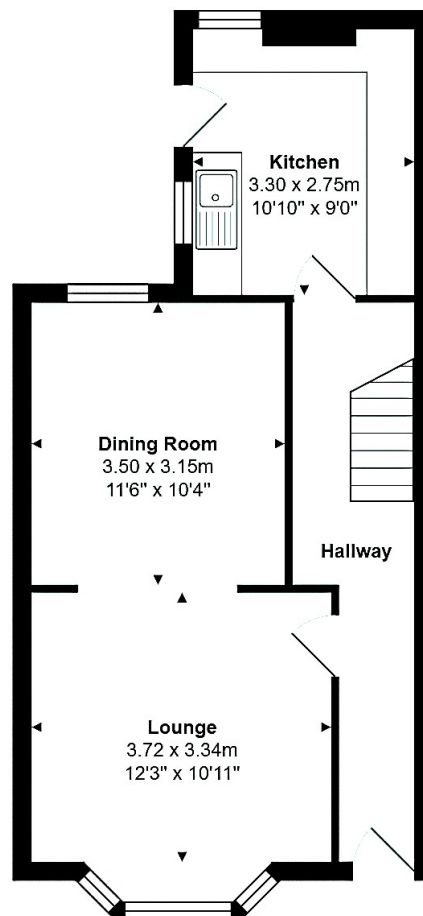
Located in the popular seaside town of Bournemouth, the property is close to a range of amenities, including shops, supermarkets, restaurants, pubs, schools and a short distance to the seafront. Excellent transport links can be found from Bournemouth Railway Station, a variety of local bus routes, and close access to the A338.

This exciting opportunity should not be missed! All enquiries can be made through Bettermove.





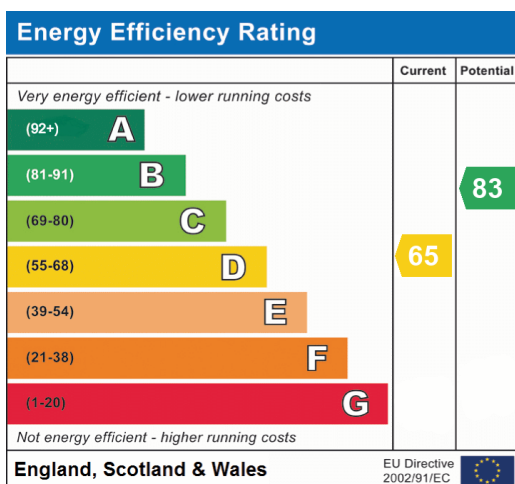
First Floor



Ground Floor

Total Area: 84.9 m² ... 914 ft²

All measurements are approximate and for display purposes only



20-22 Bridge End, Leeds, LS1 4DJ
t: 0330 004 0050 e: hello@bettermove.co.uk
www.bettermove.co.uk