



29 Thorpeville
Moulton
Northampton
NN3 7TS

Offers in Excess of £735,000

bettermove

Thorpeville Northampton

Bettermove are proud to present this 5 bedroom semi-detached house in Moulton, available with no forward chain.

This property benefits from double glazing and new gas central heating system throughout, with off road parking available to the front and side of the property.

The council tax band is D.

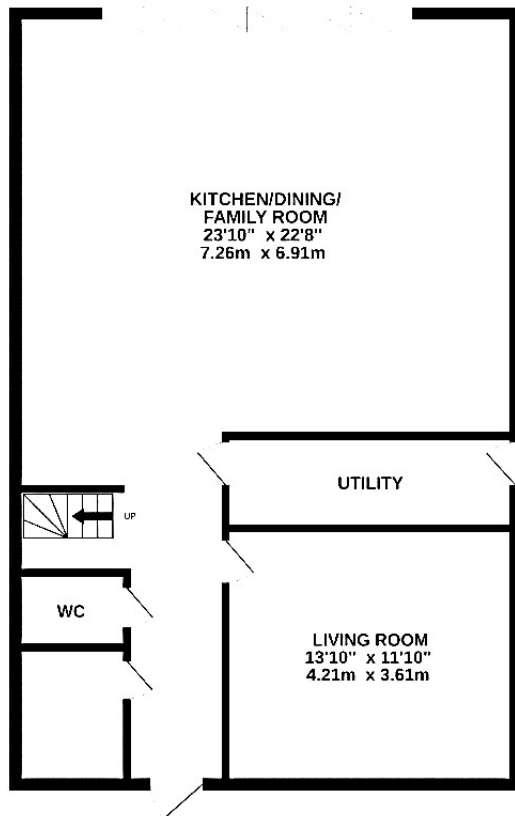
The interior of this newly renovated property features a spacious living room and a contemporary fitted kitchen/dining area, complete with an adjoining utility room and ground floor WC. The first floor offers four generously sized bedrooms, two of which benefit from en-suite facilities, along with a versatile fifth room ideal for use as a home office or nursery, and a well-appointed family bathroom. Externally, the property boasts a substantial, private rear garden with both lawn and paved areas, providing the perfect setting for outdoor entertaining and relaxation during the summer months.

Located in the quiet village of Moulton, the property is close to a range of amenities, including shops, supermarkets, restaurants, pubs and schools. Excellent transport links can be found from Northampton Railway Station, a variety of local bus routes, and quick access to the A43, leading to the M1.

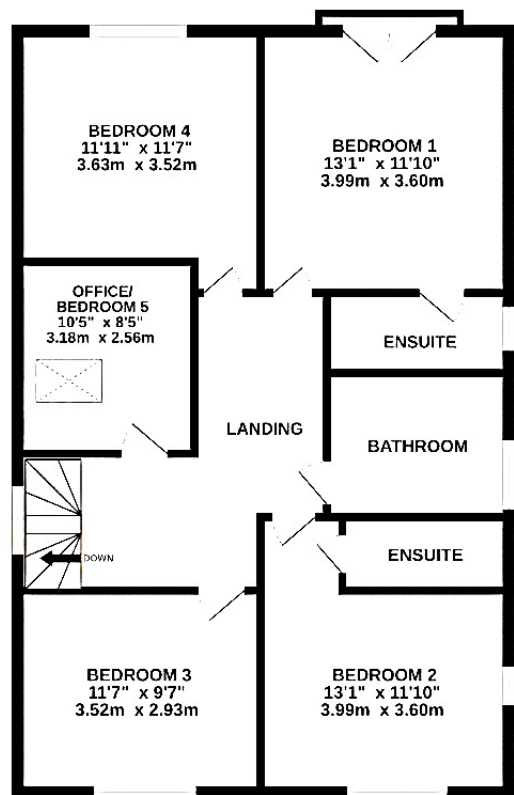
This exciting opportunity should not be missed! All enquires can be made through Bettermove.



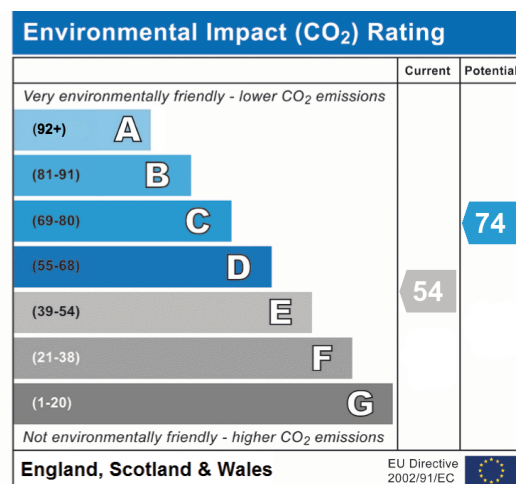
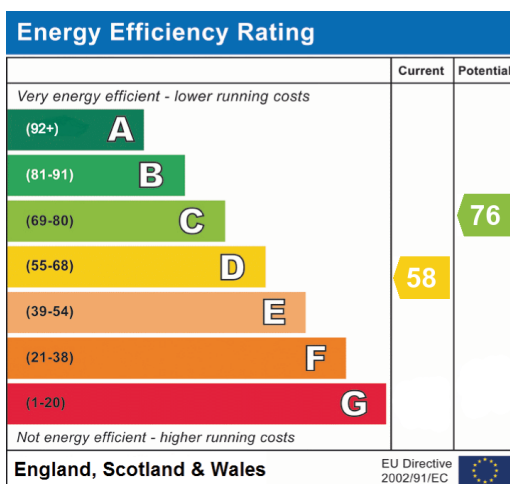
GROUND FLOOR
875 sq.ft. (81.3 sq.m.) approx.



1ST FLOOR
847 sq.ft. (78.7 sq.m.) approx.



TOTAL FLOOR AREA 1722 sq.ft. (160.0 sq.m.) approx.





20-22 Bridge End, Leeds, LS1 4DJ
t: 0330 004 0050 e: hello@bettermove.co.uk
www.bettermove.co.uk