



**Southend Lane  
Newent  
Gloucestershire  
GL18**

**Offers in Excess of £690,000**

**bettermove**

# Southend Lane

## Newent

Bettermove are proud to present this 4 bedroom detached house in Newent, available with no forward chain.

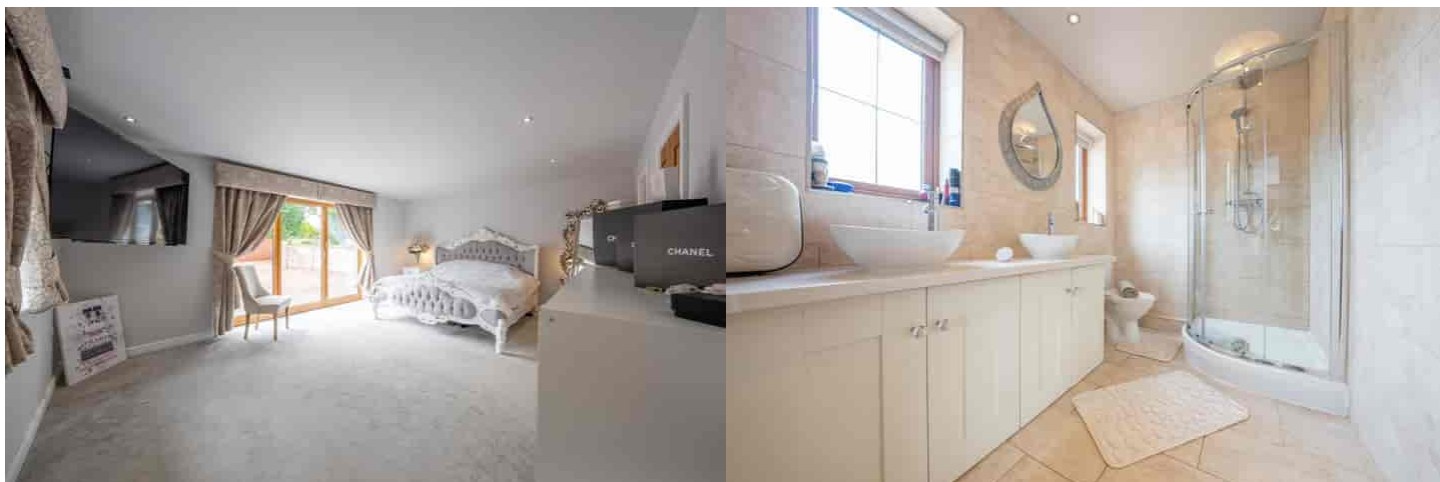
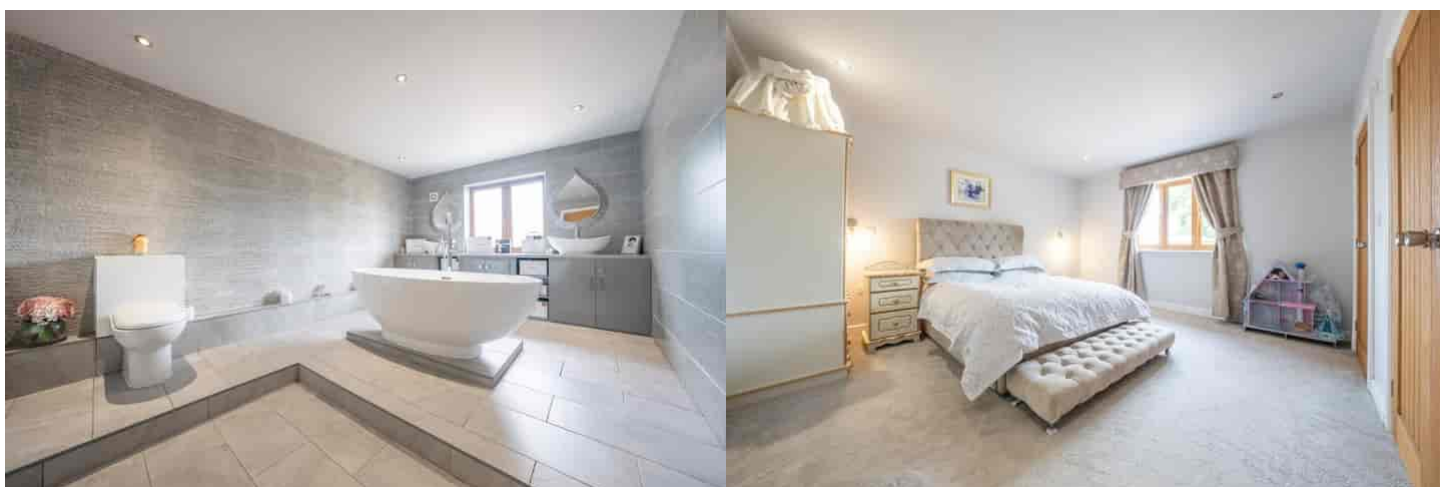
This property benefits from double glazing, oil central heating, solar panels and underfloor heating, with off road parking available for multiple vehicles.

The council tax band is E.

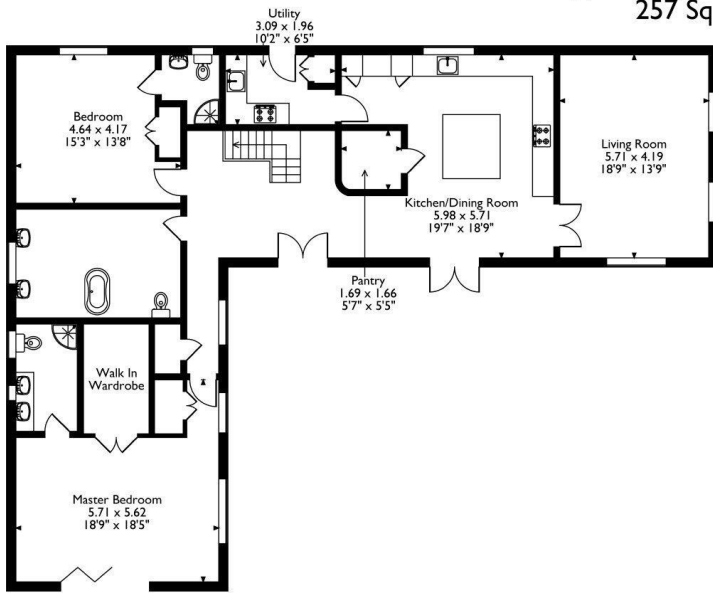
This beautifully presented home offers an exceptional blend of style, space, and functionality. The interior features a generously proportioned living room and a modern fitted kitchen/diner, complete with a central island, walk-in pantry, and adjoining utility room. The ground floor also comprises a spacious double bedroom with an en-suite shower room, a luxurious family bathroom with a freestanding bath, and a well-appointed master suite featuring a private en-suite and a walk-in wardrobe. Upstairs, you'll find two further double bedrooms, each benefiting from their own en-suite facilities. Externally, the property boasts an impressive outbuilding with a built-in bar—an ideal space for hosting, as well as expansive, private gardens featuring well-maintained lawns and patio areas, perfect for relaxing or entertaining during the summer months.

Located in the popular town of Newent, the property is close to a range of amenities, including shops, supermarkets, restaurants and pubs. Excellent transport links can be found from Gloucester, a variety of local bus routes, and quick access to the M50.

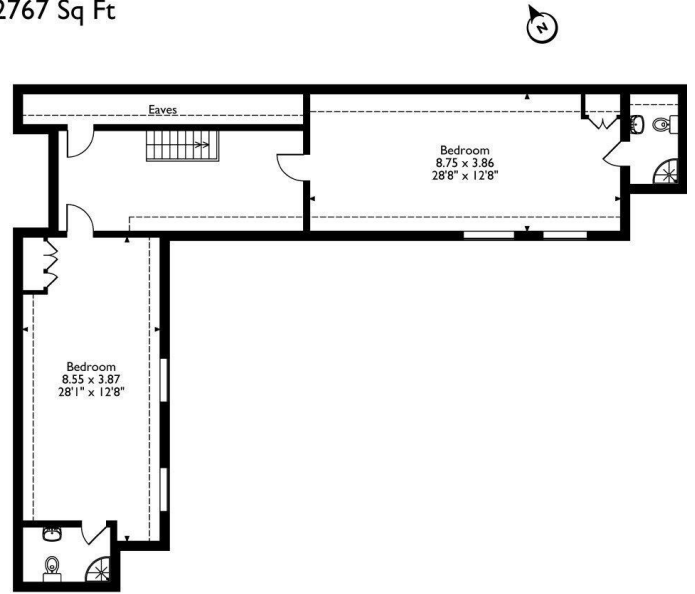
This exciting opportunity should not be missed! All enquiries can be made through Bettermove.



Approximate Gross Internal Area  
257 Sq M/2767 Sq Ft



Ground Floor



First Floor





20-22 Bridge End, Leeds, LS1 4DJ  
t: 0330 004 0050 e: [hello@bettermove.co.uk](mailto:hello@bettermove.co.uk)  
[www.bettermove.co.uk](http://www.bettermove.co.uk)