



**Plomer Green Avenue
Downley
High Wycombe
Buckinghamshire
HP13**

Offers In Excess Of £699,000

bettermove

Plomer Green Avenue

High Wycombe

Bettermove are proud to present this 3 bedroom detached house in Downley.

This property benefits from gas central heating throughout, and partial double glazing, with off road parking available to the front and side of the property.

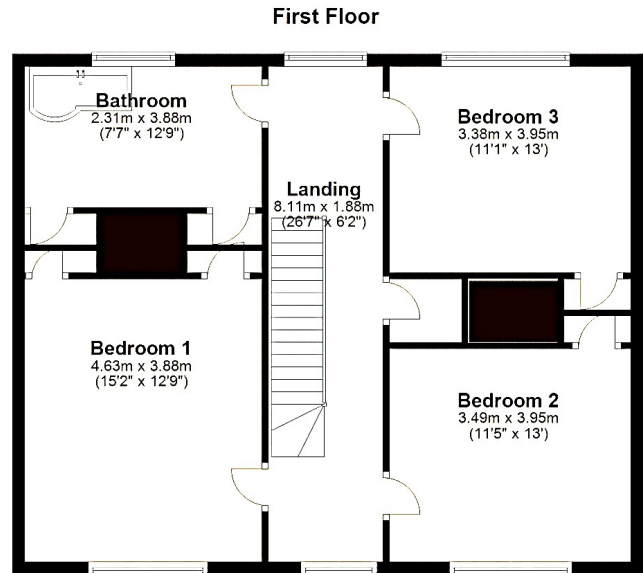
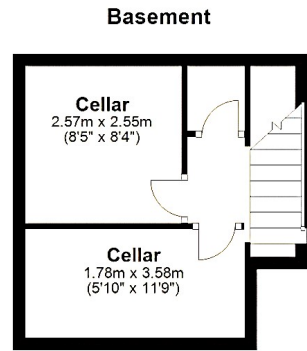
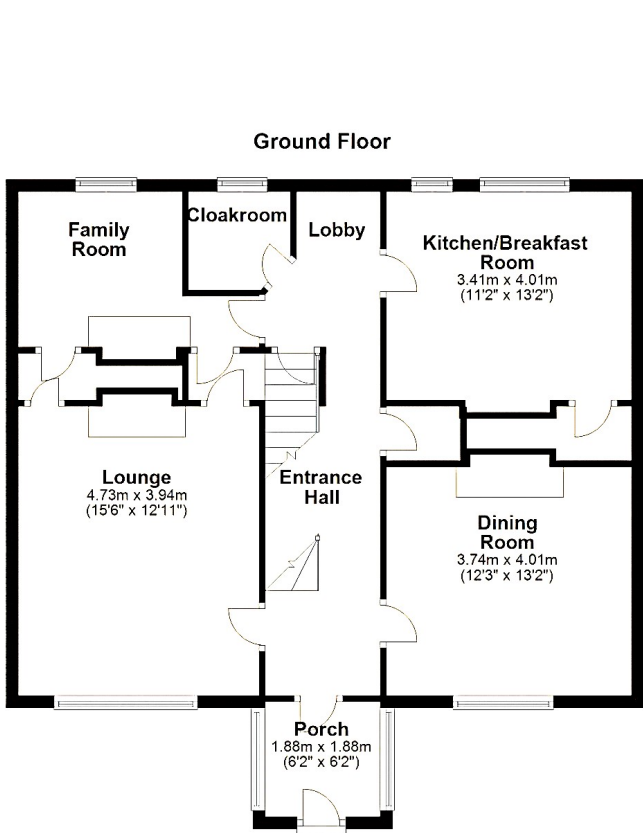
The council tax band is F.

The interior of this beautifully presented property comprises a spacious lounge, family room, dining room and kitchen/breakfast room on the ground floor, with access into the cellar. The first floor consists of three good sized bedrooms, and the family bathroom. The exterior boasts large, private gardens, perfect for enjoying the summer months. Additionally, there is an outhouse, currently being used as an office and storage area.

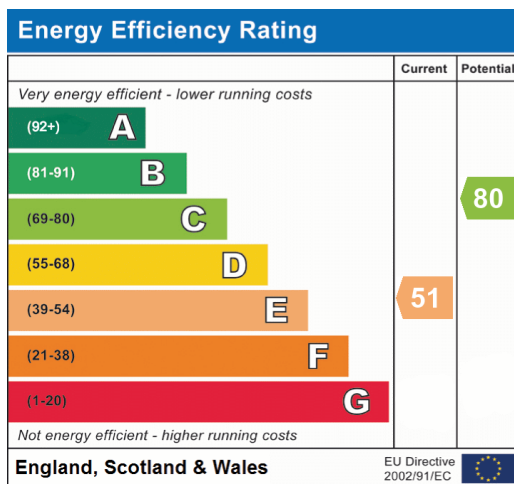
Located in the quiet village of Downley, High Wycombe, the property is close to a range of amenities, including shops, supermarkets, restaurants and pubs. Excellent transport links can be found from High Wycombe Railway Station, with direct links into London, a variety of local bus routes, and quick access to the M40.

This exciting opportunity should not be missed! All enquiries can be made through Bettermove on 0330 004 0050.





These measurements are not to an exact scale, more they are for guidelines and to give a rough estimate
Plan produced using PlanUp.





20-22 Bridge End, Leeds, LS1 4DJ
t: 0330 004 0050 e: hello@bettermove.co.uk
www.bettermove.co.uk