



Elmton Road  
Creswell  
Worksop  
Nottinghamshire  
S80

Offers In Excess Of £90,000

bettermove

# Elmton Road Worksop

Bettermove are proud to present this 3 bedroom Edwardian terrace house in Creswell, available with no forward chain.

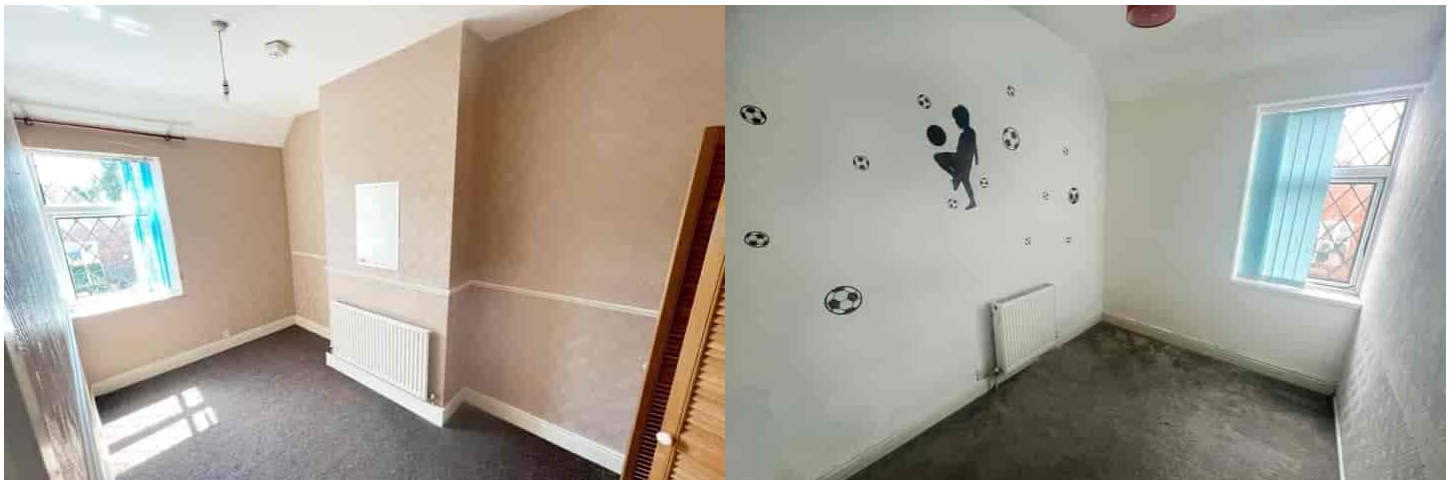
This property benefits from double glazing and gas central heating throughout, with off road parking available.

The council tax band is A.

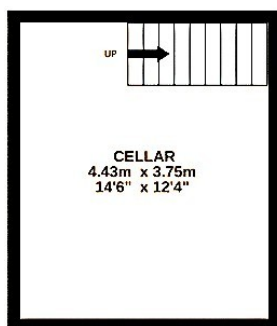
The interior of this beautifully presented property comprises a spacious living room, dining room and kitchen on the ground floor, with access to the cellar. The first floor consists of three good sized bedrooms and the family bathroom. The exterior boasts a low maintenance, private rear yard, partially used for parking, as well as three free standing storage sheds.

Located in quiet village of Creswell, Worksop, the property is close to a range of amenities, including shops, supermarkets, restaurants and pubs. Excellent transport links can be found from Creswell Railway Station, a variety of local bus routes, and close access to the M1.

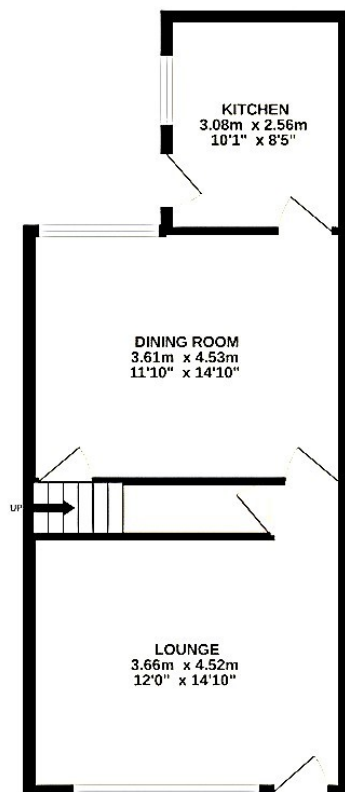
This exciting opportunity should not be missed! All enquiries can be made through Bettermove on 0330 004 0050.



BASEMENT  
16.6 sq.m. (179 sq.ft.) approx.



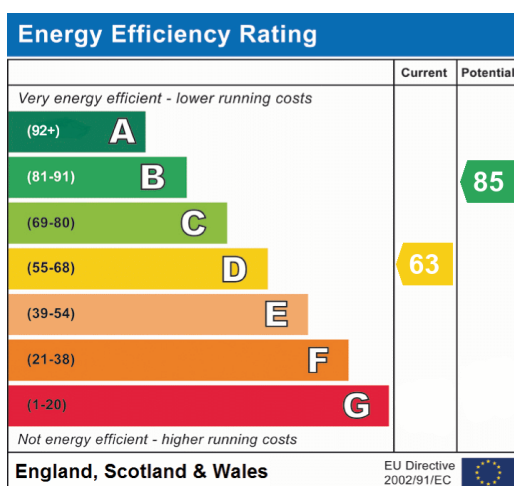
GROUND FLOOR  
44.4 sq.m. (478 sq.ft.) approx.



1ST FLOOR  
44.4 sq.m. (478 sq.ft.) approx.



TOTAL FLOOR AREA : 105.3 sq.m. (1134 sq.ft.) approx.







20-22 Bridge End, Leeds, LS1 4DJ  
t: 0330 004 0050 e: [hello@bettermove.co.uk](mailto:hello@bettermove.co.uk)  
[www.bettermove.co.uk](http://www.bettermove.co.uk)