



**Durban Avenue
Liverpool
Merseyside
L23**

Offers In Excess Of £170,000

bettermove

Durban Avenue

Liverpool

Bettermove are proud to present this 2 bedroom terraced house in Liverpool, available with no forward chain.

This property benefits from double glazing and gas central heating throughout, with on street parking available.

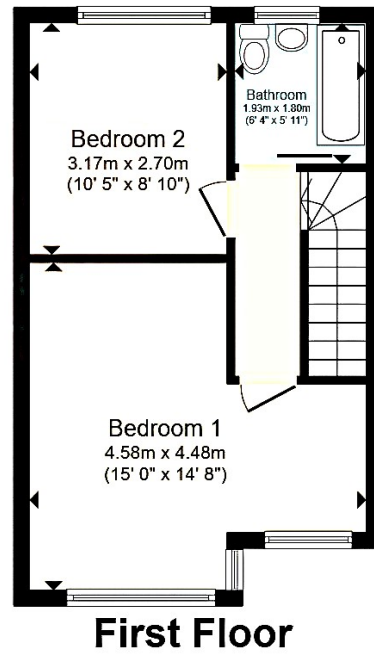
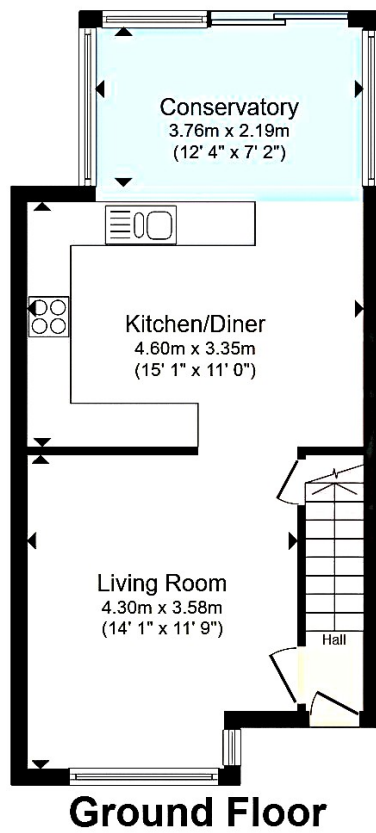
The council tax band is B.

The interior of this beautifully presented property comprises a spacious living room, fitted kitchen/diner and conservatory on the ground floor. The first floor consists of two bedrooms and the family bathroom. The exterior boasts a front garden with lawn and patio, and a private rear garden, perfect for enjoying the summer months.

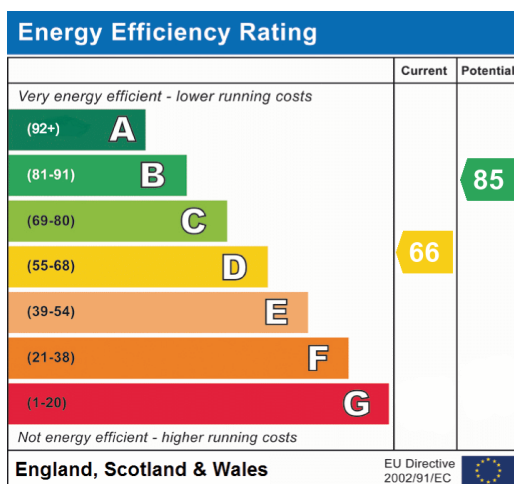
Located in the popular city of Liverpool, the property is close to a range of amenities, including shops, supermarkets, restaurants and pubs. Excellent transport links can be found from Blundellsands & Crosby Station, a variety of local bus routes, and close access to the M57 and M58.

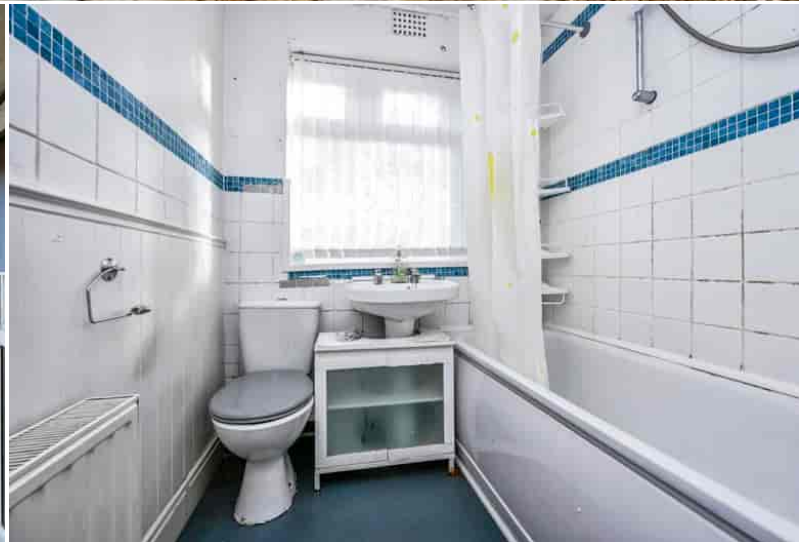
This exciting opportunity should not be missed! All enquiries can be made through Bettermove on 0330 004 0050.





Total floor area 77.1 m² (830 sq.ft.) approx





20-22 Bridge End, Leeds, LS1 4DJ
 t: 0330 004 0050 e: hello@bettermove.co.uk
www.bettermove.co.uk