



**Southtown Road
Great Yarmouth
Norfolk
NR31**

Offers in Excess of £198,000

bettermove

Southtown Road

Great Yarmouth

Bettermove are proud to present this 3 bedroom semi-detached house in Great Yarmouth.

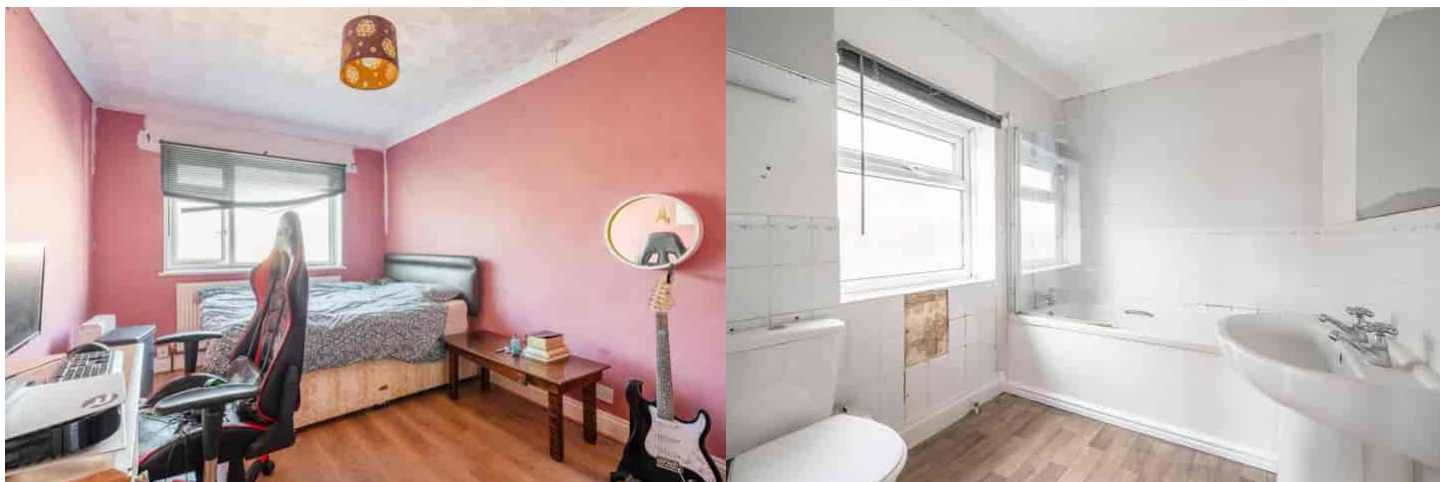
This property benefits from double glazing and gas central heating throughout, with off road parking available via the driveway.

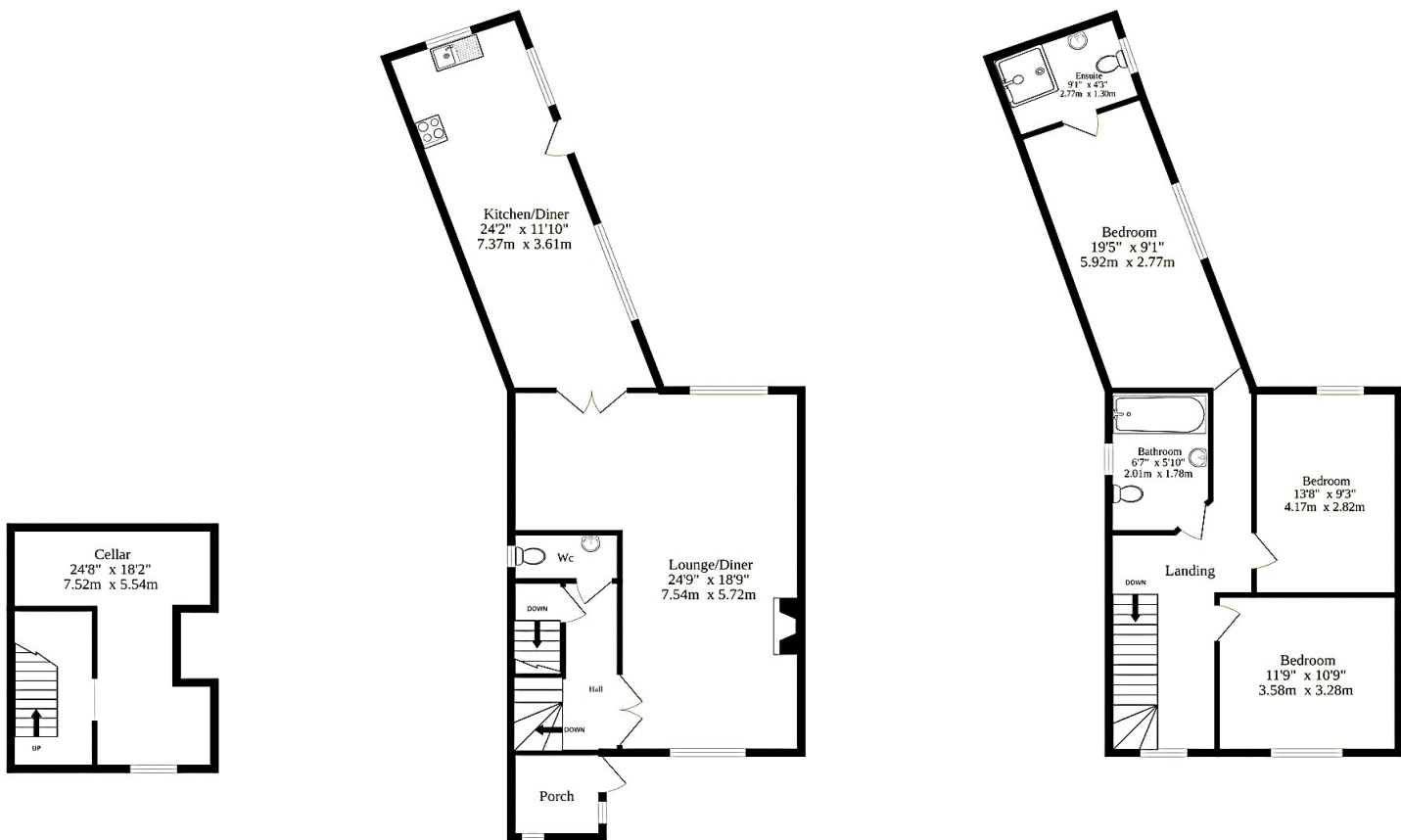
The council tax band is B.

The interior of this beautifully presented property comprises a spacious lounge/dining room, fitted kitchen and WC on the ground floor, with access to the cellar. The first floor consists of three good sized bedrooms, with one en-suite and the family bathroom. The exterior boasts a private rear garden, perfect for enjoying the summer months.

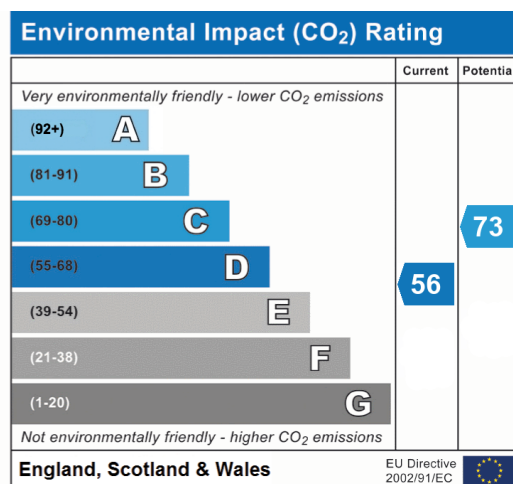
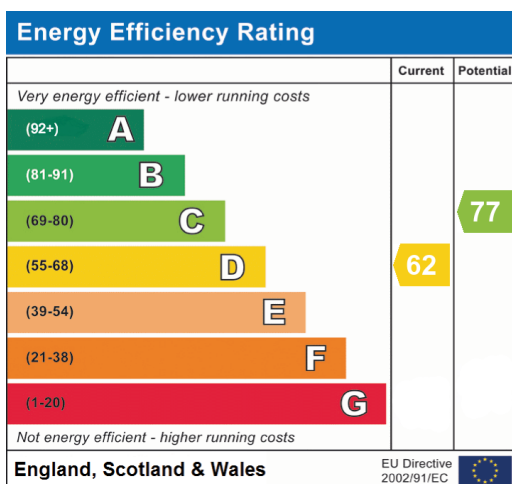
Located in the popular seaside town of Great Yarmouth, the property is close to a range of amenities, including shops, supermarkets, restaurants, pubs and a short walk to Great Yarmouth Beach. Excellent transport links can be found from Great Yarmouth Railway Station, a range of local bus routes, and quick access to the A47.

This exciting opportunity should not be missed! All enquiries can be made through Bettermove on 0330 004 0050.





TOTAL FLOOR AREA : 2235 sq.ft. (207.6 sq.m.) approx.





20-22 Bridge End, Leeds, LS1 4DJ
t: 0330 004 0050 e: hello@bettermove.co.uk
www.bettermove.co.uk