



**Greenfields Gardens
Shrewsbury
Shropshire
SY1**

Offers in Excess of £245,000

bettermove

Greenfields Gardens

Shrewsbury

Bettermove are proud to present this 3 bedroom terrace house in Shrewsbury, available with no forward chain.

The property benefits from double glazing and gas central heating throughout, with off road parking available via the driveway and garage.

The council tax band is C.

This is a leasehold property of 155 years, starting in 2007; the ground rent is £405.00 per annum.

The interior of this beautifully presented property comprises a garage, small bedroom/study room, utility and shower room on the ground floor. The first floor consists of a spacious lounge and fitted kitchen/diner, with the further two bedrooms located on the second floor, both with en-suites. The exterior boasts a private rear garden, perfect for enjoying the summer months.

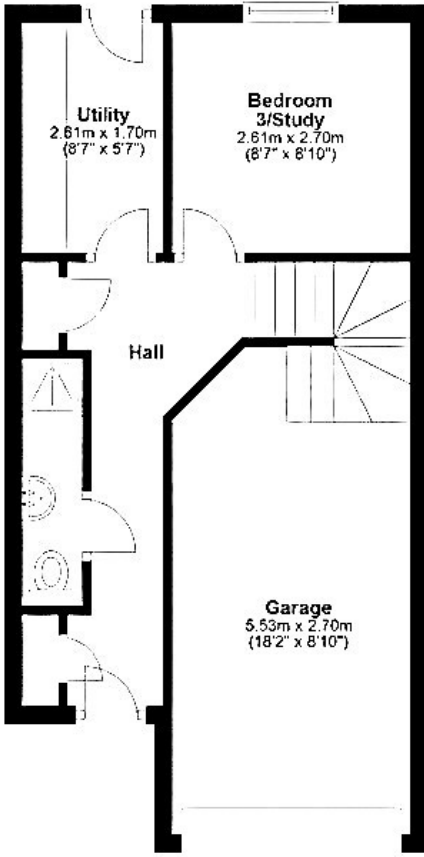
Located in the popular town of Shrewsbury, the property is close to a range of amenities, including shops, supermarkets, restaurants and pubs. Excellent transport links can be found from Shrewsbury Railway Station, a variety of local bus routes, and close access to the A5.

This exciting opportunity should not be missed! All enquiries can be made through Bettermove on 0330 004 0050.



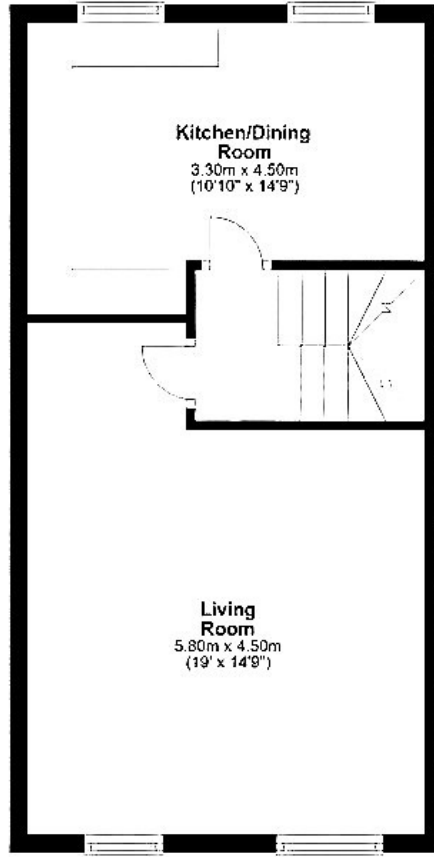
Ground Floor

Approx. 38.0 sq. metres (408.7 sq. feet)



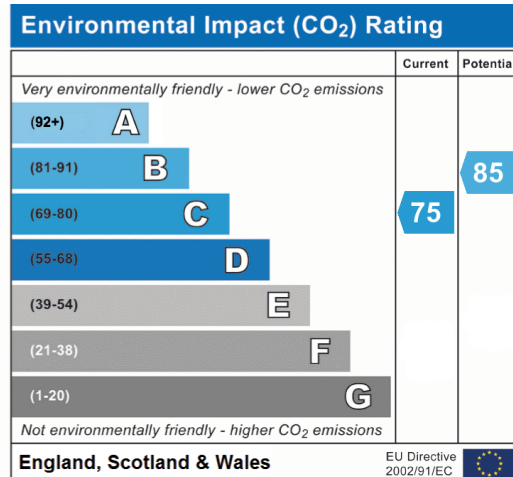
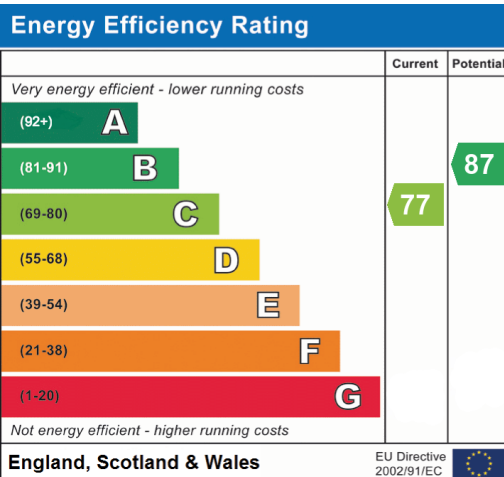
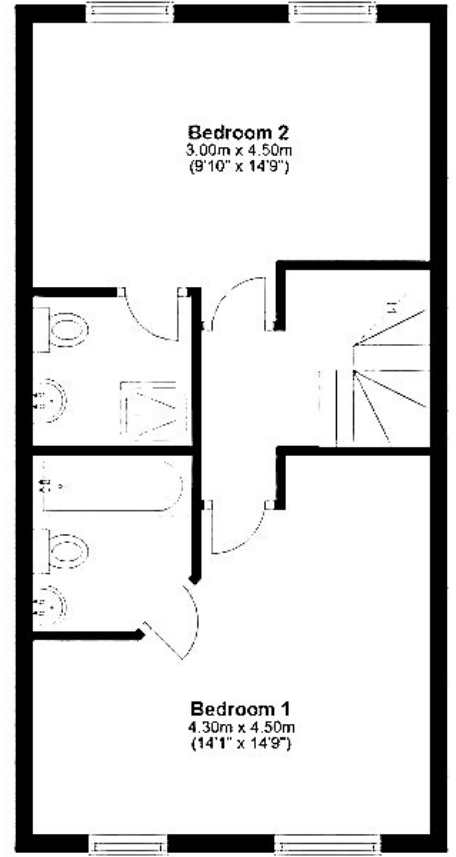
First Floor

Approx. 41.4 sq. metres (445.2 sq. feet)



Second Floor

Approx. 41.4 sq. metres (445.2 sq. feet)





20-22 Bridge End, Leeds, LS1 4DJ
t: 0330 004 0050 e: hello@bettermove.co.uk
www.bettermove.co.uk