



Church Lane  
Rudford  
Gloucester  
GL2

Offers in Excess of £450,000

bettermove

# Church Lane Gloucester

Bettermove are proud to present this 5 bedroom semi-detached house, situated in a converted mill, in Rudford, Gloucester.

This property benefits from double glazing and oil central heating throughout, with ample off road parking available via a private gated entrance.

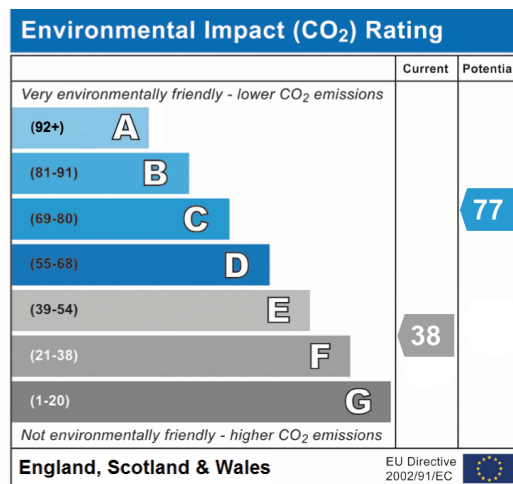
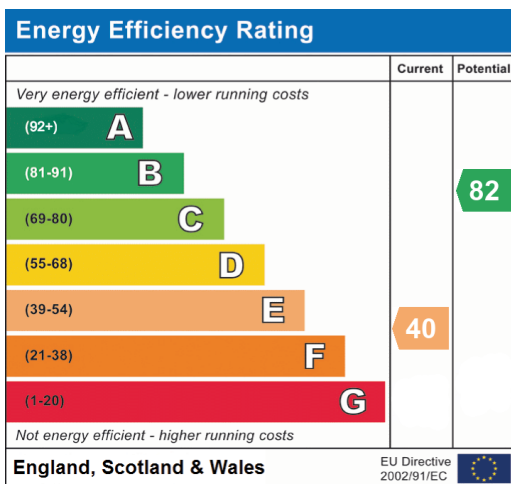
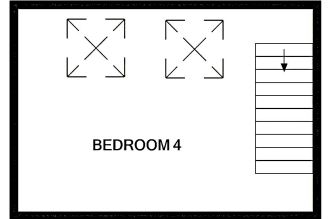
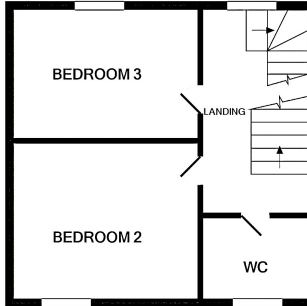
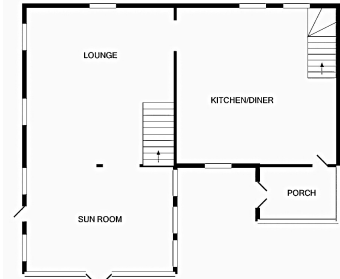
The council tax band is D.

The interior of this beautifully presented property comprises a spacious lounge, fitted kitchen/diner and sunroom on the ground floor. The first floor consists of one bedroom, a small bedroom/study and bathroom, the second floor houses a further two bedrooms and WC, with the fourth bedroom located on the third floor. The exterior boasts a large private garden, equating to 0.5 acres, perfect for enjoying the summer months.

Located in the quiet village of Rudford, Gloucester, the property is close to a range of amenities, including shops, supermarkets, restaurants and pubs. Excellent transport links can be found from Gloucester Railway Station, a variety of local bus routes, and close access to the A40.

This exciting opportunity should not be missed! All enquiries can be made through Bettermove on 0330 004 0050.









20-22 Bridge End, Leeds, LS1 4DJ  
t: 0330 004 0050 e: [hello@bettermove.co.uk](mailto:hello@bettermove.co.uk)  
[www.bettermove.co.uk](http://www.bettermove.co.uk)