



**Eastdean Close  
Birmingham  
West Midlands  
B23**

**Offers In Excess Of £125,000**

**bettermove**



# Eastdean Close

## Birmingham

Bettermove are proud to present this 2 bedroom maisonette in Birmingham, available with no forward chain.

The property benefits from double glazing and gas central heating throughout.

The council tax band is A.

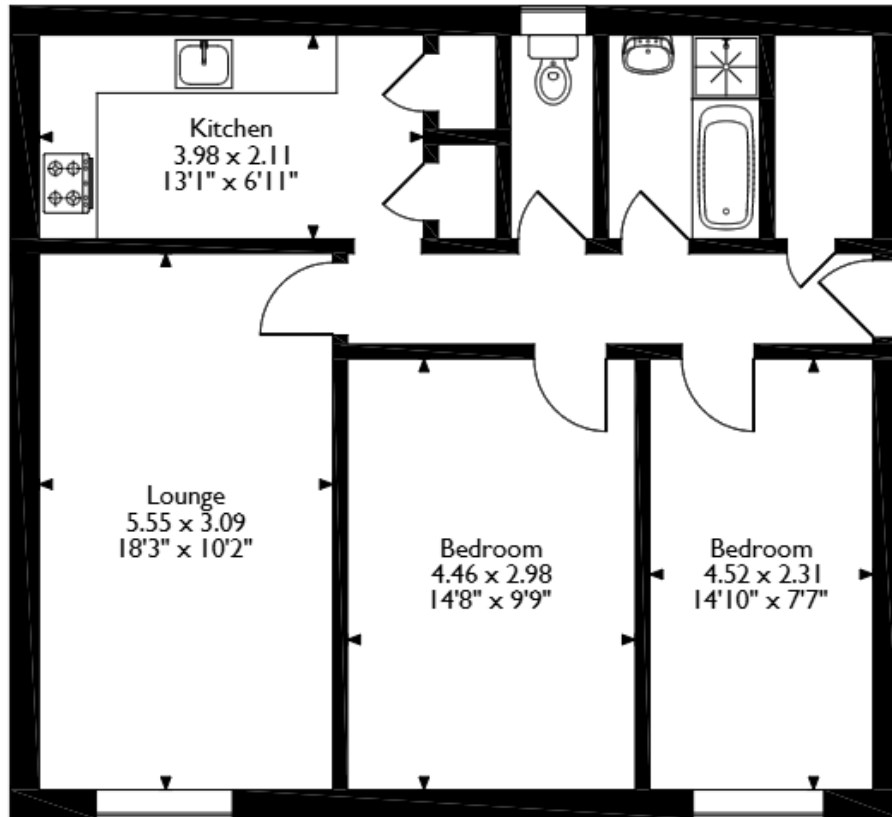
The interior of this beautifully presented, first floor property comprises a spacious living room, fitted kitchen, two bedrooms and the family bathroom, with a separate WC.

Located in Perry Common, in the popular city of Birmingham, the property is close to a range of amenities, including shops, supermarkets, restaurants and pubs. Excellent transport links can be found from Erdington Railway Station, a range of local bus routes and close access to the M6.


This exciting opportunity should not be missed! All enquiries can be made through Bettermove on 0330 004 0050.



Eastdean Close, Birmingham  
Approximate Gross Internal Area  
67 Sq M/721 Sq Ft



Please note that the location of doors, windows and other items are approximate and this floorplan is to be used for illustrative purposes only. Unauthorized reproduction is prohibited.

Energy Efficiency Rating		
	Current	Potential
Very energy efficient - lower running costs		
(92+) <b>A</b>		
(81-91) <b>B</b>		
(69-80) <b>C</b>	75	75
(55-68) <b>D</b>		
(39-54) <b>E</b>		
(21-38) <b>F</b>		
(1-20) <b>G</b>		
Not energy efficient - higher running costs		
<b>England, Scotland &amp; Wales</b> EU Directive 2002/91/EC 		



20-22 Bridge End, Leeds, LS1 4DJ  
t: 0330 004 0050 e: [hello@bettermove.co.uk](mailto:hello@bettermove.co.uk)  
[www.bettermove.co.uk](http://www.bettermove.co.uk)