



**New Kings Head Yard
Salford
Greater Manchester
M3**

Offers In Excess Of £250,000

bettermove

New Kings Head Yard Salford

Bettermove are proud to present this 2 bedroom apartment in Salford, available chain free, welcoming cash buyers only.

This property benefits from high performance glazing and electric heating throughout.

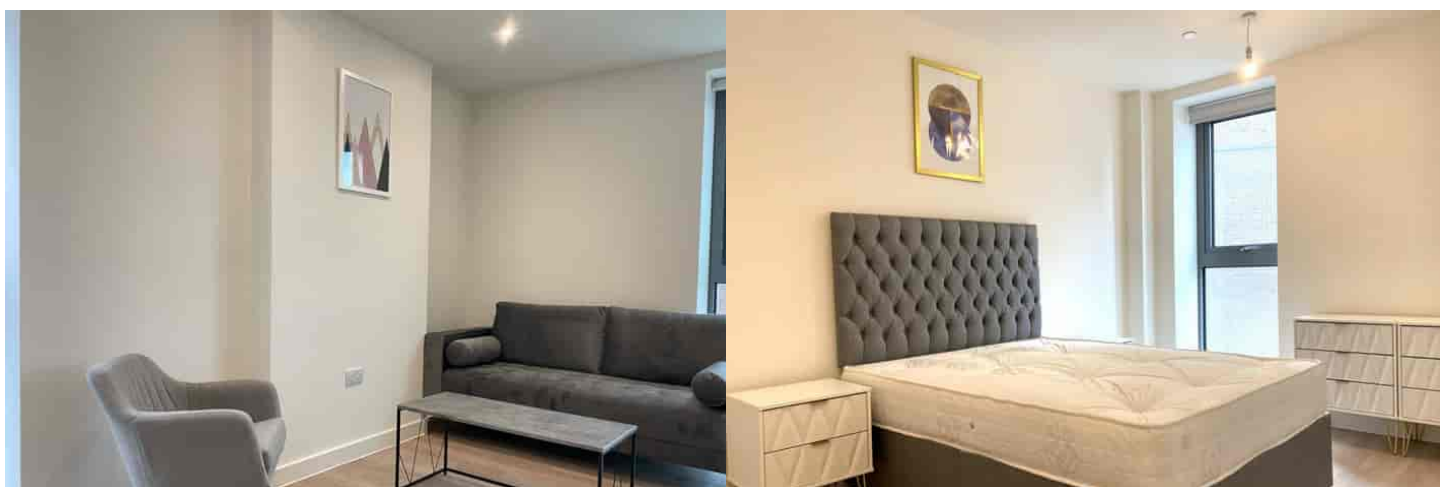
The council tax band is B.

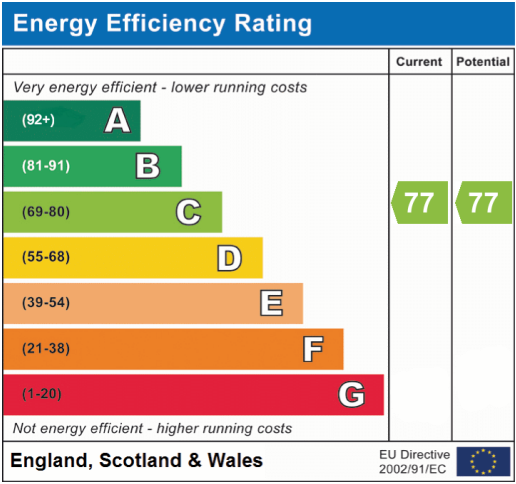
This is a leasehold property with 242 years remaining on the lease; the ground rent is £500.00 per annum and the service charge is £2,490.00 per annum.

The interior of this beautifully presented, twelfth floor property comprises a spacious, open plan living area with a fitted kitchen and dining area, two double bedrooms and the family bathroom. The development benefits from a concierge service, communal gym, meeting room, work spaces and soon to open a cafe.

Located in the popular city of Salford, the property is close to a range of amenities, including shops, supermarkets, restaurants and pubs. Excellent transport links can be found from Manchester Victoria and Salford Central Railway Stations, as well as a variety of local bus and tram routes.

This exciting opportunity should not be missed! All enquiries can be made through Bettermove on 0330 004 0050.







20-22 Bridge End, Leeds, LS1 4DJ
t: 0330 004 0050 e: hello@bettermove.co.uk
www.bettermove.co.uk