



**Burnsall Mews
Silsden
Keighley
West Yorkshire
BD20**

Offers in Excess of £262,000

bettermove

Burnsall Mews

Keighley

Bettermove are proud to present this 3 bedroom terraced house in Silsden, Keighley, available with no forward chain.

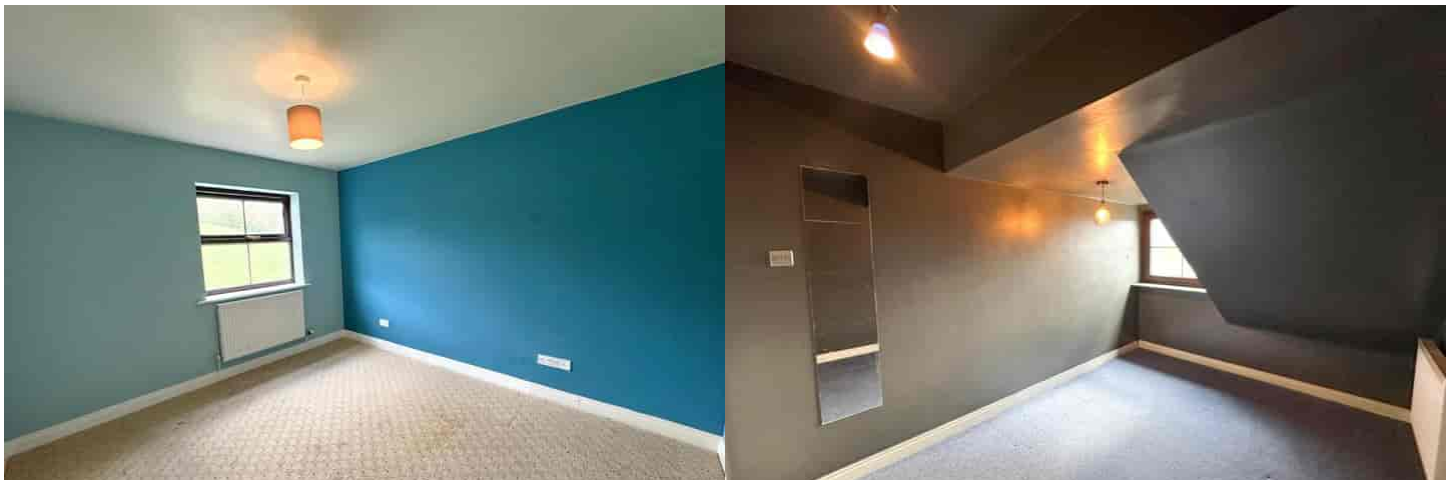
This property benefits from double glazing and gas central heating throughout, with off road parking available via a double driveway and garage.

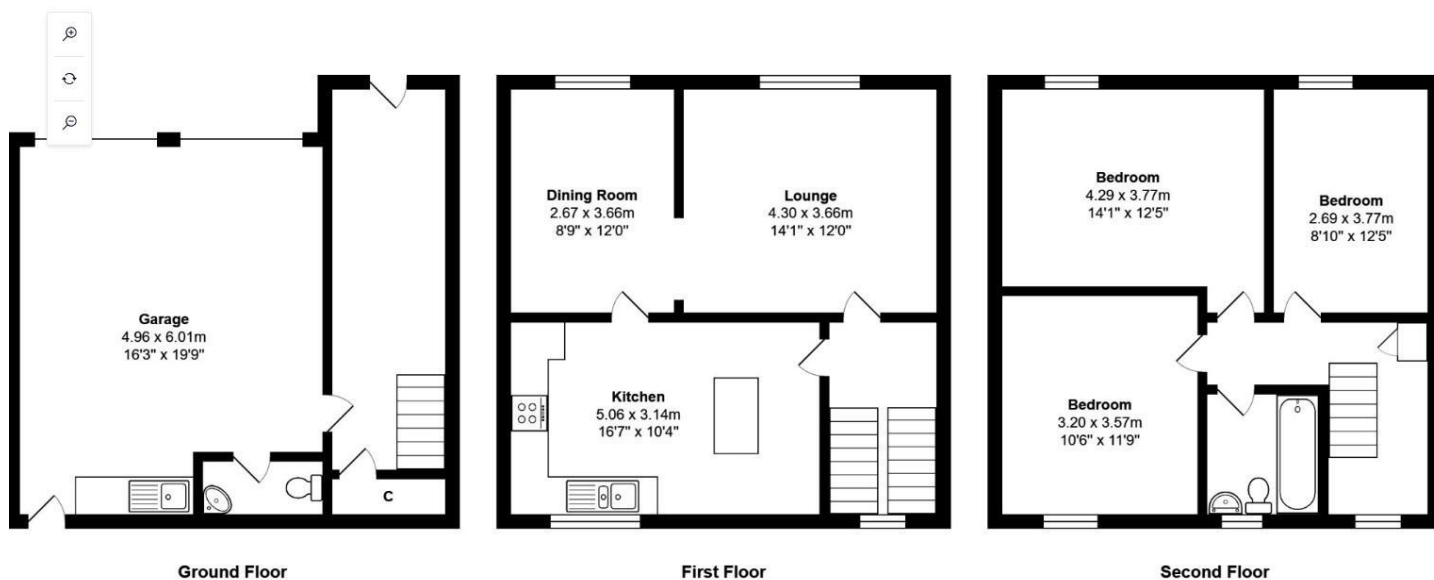
The council tax band is D.

The interior of this beautifully presented property comprises a large garage on the ground floor, with utility and WC. The first floor consists of a spacious living room, dining room and fitted kitchen, the three bedrooms and the family bathroom are located on the second floor. The exterior boasts a private rear garden, backing onto open fields, perfect for enjoying the summer months.

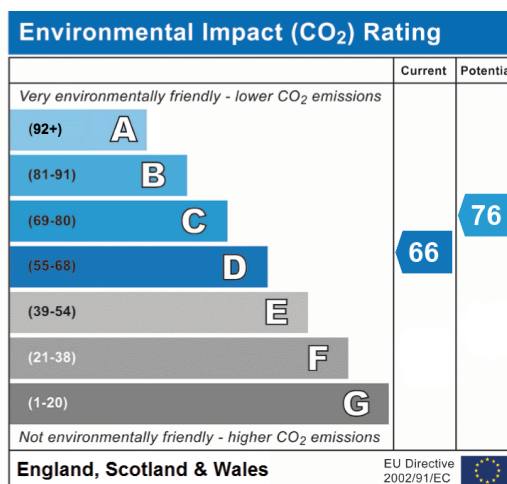
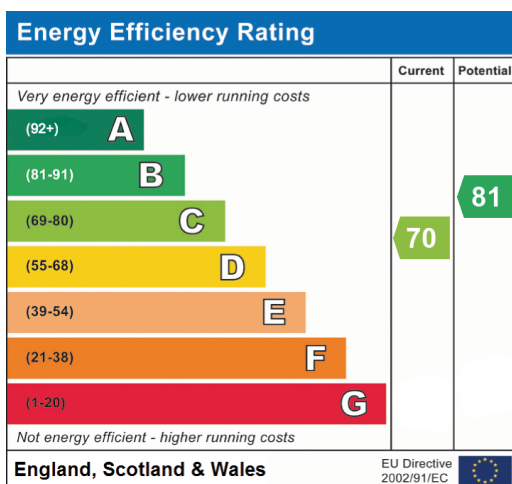
Located in the popular town of Silsden, Keighley, the property is close to a range of amenities, including shops, supermarkets, restaurants and pubs. Excellent transport links can be found from Steeton & Silsden Railway Station, a variety of local bus routes and close access to the A629, leading into Skipton and Bradford.

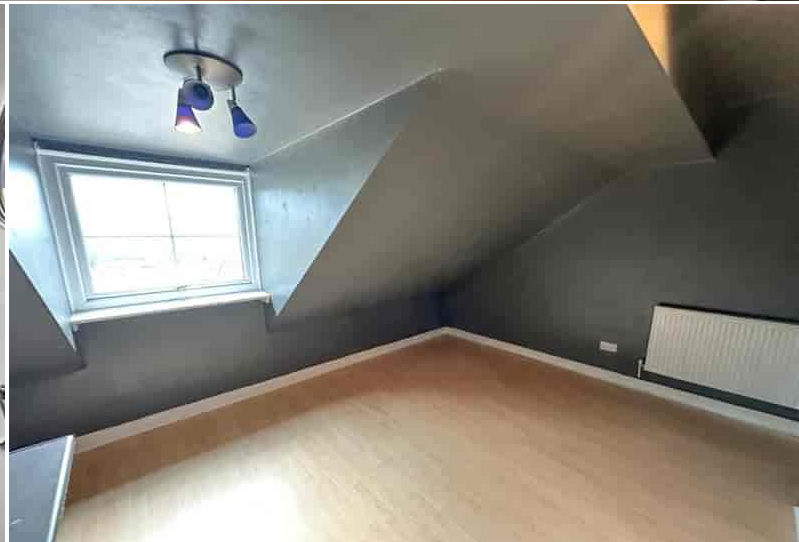
This exciting opportunity should not be missed! All enquiries can be made through Bettermove on 0330 004 0050.





Total Area: 111.2 m² ... 1197 ft² (excluding garage)
All measurements are approximate and for display purposes only





20-22 Bridge End, Leeds, LS1 4DJ
t: 0330 004 0050 e: hello@bettermove.co.uk
www.bettermove.co.uk