



Whittaker Avenue  
Blackpool  
Lancashire  
FY3 8RE

Offers in Excess of £82,000

bettermove



# Whittaker Avenue

## Blackpool

Bettermove are proud to present this 2 bedroom terraced house in Blackpool, available with no forward chain.

This is a tenanted property and will be sold with tenants in situ for immediate investment. Rental yields can be obtained through Bettermove.

This property benefits from double glazing and gas central heating throughout, with on road parking available.

The council tax band is A.

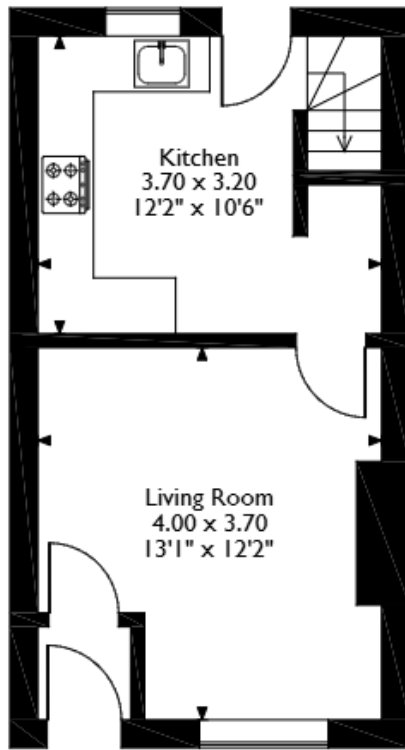
The interior of this beautifully presented property comprises a spacious living room and fitted kitchen on the ground floor. The first floor consists of two double bedrooms and the family bathroom. The exterior boasts a rear private yard, perfect for enjoying the summer months.

Located in the popular seaside town of Blackpool, the property is close to a range of amenities including shops, supermarkets, restaurants and pubs. Excellent transport links can be found from Layton and Blackpool North Railway Stations, a variety of local bus routes and close access to the M55.

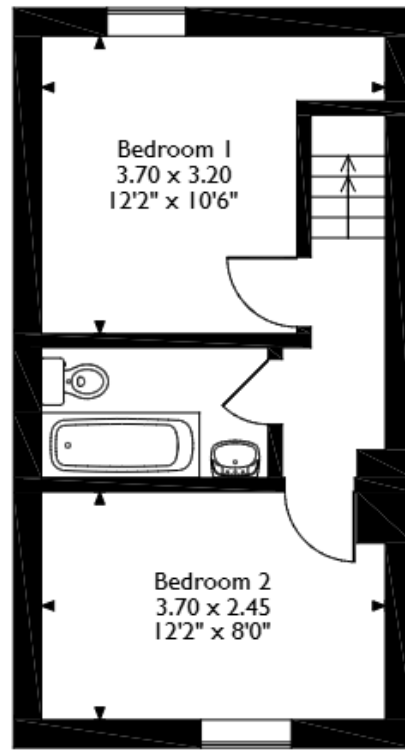
This exciting opportunity should not be missed! All enquiries can be made through Bettermove on 0330 004 0050.



Whittaker Avenue, Blackpool  
Approximate Gross Internal Area  
54 Sq M/582 Sq Ft





**Ground Floor**



**First Floor**

Please note that the location of doors, windows and other items are approximate and this floorplan is to be used for illustrative purposes only. Unauthorized reproduction is prohibited.

Energy Efficiency Rating		
	Current	Potential
Very energy efficient - lower running costs		
(92+) <b>A</b>		<b>80</b>
(81-91) <b>B</b>		
(69-80) <b>C</b>		
(55-68) <b>D</b>		
(39-54) <b>E</b>	<b>55</b>	
(21-38) <b>F</b>		
(1-20) <b>G</b>		
Not energy efficient - higher running costs		
England, Scotland & Wales		EU Directive 2002/91/EC 

Environmental Impact (CO <sub>2</sub> ) Rating		
	Current	Potential
Very environmentally friendly - lower CO <sub>2</sub> emissions		
(92+) <b>A</b>	<div>53</div>	<div>81</div>
(81-91) <b>B</b>		
(69-80) <b>C</b>		
(55-68) <b>D</b>		
(39-54) <b>E</b>		
(21-38) <b>F</b>		
(1-20) <b>G</b>		
Not environmentally friendly - higher CO <sub>2</sub> emissions		
England, Scotland & Wales		EU Directive 2002/91/EC 





20-22 Bridge End, Leeds, LS1 4DJ  
t: 0330 004 0050 e: [hello@bettermove.co.uk](mailto:hello@bettermove.co.uk)  
[www.bettermove.co.uk](http://www.bettermove.co.uk)