



Lovewell Road  
Lowestoft  
Suffolk  
NR33 0RQ

Offers in Excess of £122,000

bettermove 

# Lovewell Road

## Lowestoft

Bettermove are proud to present this 2 bedroom terrace house in Lowestoft.

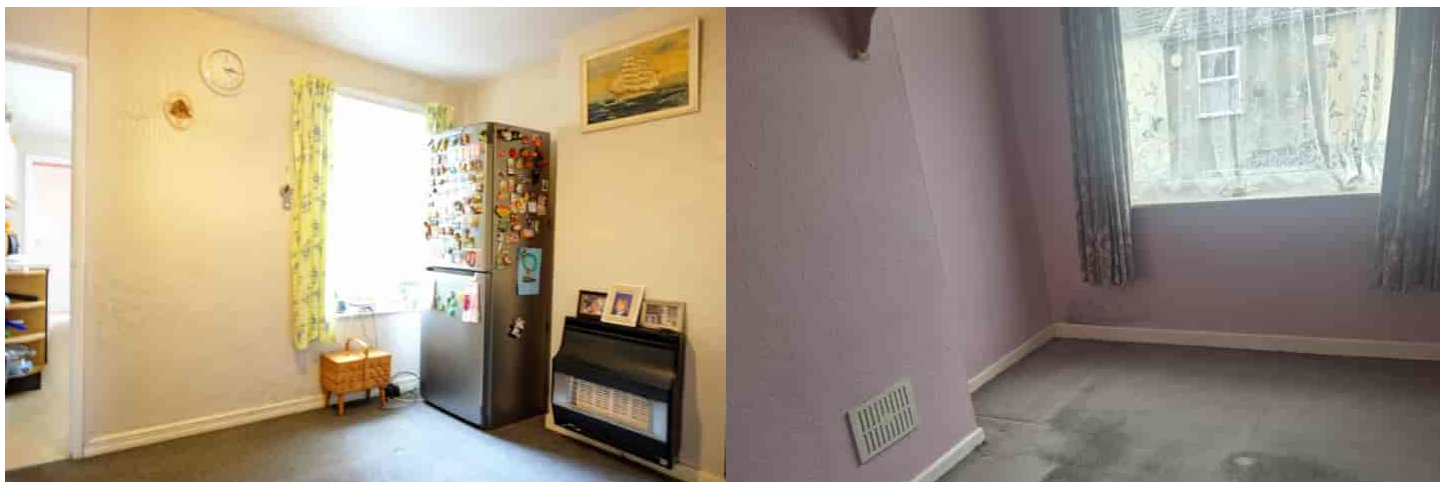
The property benefits from double glazing and gas heating throughout, with on street parking available.

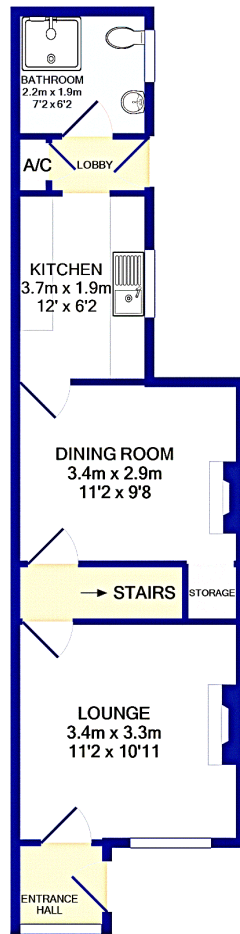
The council tax band is A.

The interior of this well presented property comprises a spacious living room, dining room, fitted kitchen and shower room on the ground floor. The first floor consists of two double bedrooms. The exterior boasts a private rear garden, perfect for enjoying the summer months.

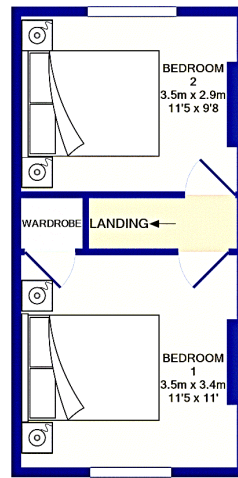
Located in the popular seaside town of Lowestoft, the property is close to a range of amenities, including shops, supermarkets, restaurants, pubs and a short walk to the seafront. Excellent transport links can be found from Lowestoft Railway Station, a variety of local bus routes and close access to the A12.

This exciting opportunity should not be missed! All enquiries can be made through Bettermove on 0330 004 0050.






GROUND FLOOR  
APPROX. FLOOR  
AREA 36.8 SQ.M.  
(396 SQ.FT.)



1ST FLOOR  
APPROX. FLOOR  
AREA 23.1 SQ.M.  
(248 SQ.FT.)

Energy Efficiency Rating		
	Current	Potential
Very energy efficient - lower running costs		
(92+) <b>A</b>		
(81-91) <b>B</b>		84
(69-80) <b>C</b>		
(55-68) <b>D</b>		
(39-54) <b>E</b>	44	
(21-38) <b>F</b>		
(1-20) <b>G</b>		
Not energy efficient - higher running costs		
England, Scotland & Wales		EU Directive 2002/91/EC 





20-22 Bridge End, Leeds, LS1 4DJ  
t: 0330 004 0050 e: [hello@bettermove.co.uk](mailto:hello@bettermove.co.uk)  
[www.bettermove.co.uk](http://www.bettermove.co.uk)