



9, Greystoke Court  
Clifton Drive  
Blackpool  
Lancashire  
FY4 1DQ

Offers In Excess Of £60,000

bettermove

# Clifton Drive

## Blackpool

Bettermove are proud to present this 1 bedroom flat in Blackpool, available with no forward chain.

The property benefits from double glazing and electric, underfloor heating throughout, with communal parking available.

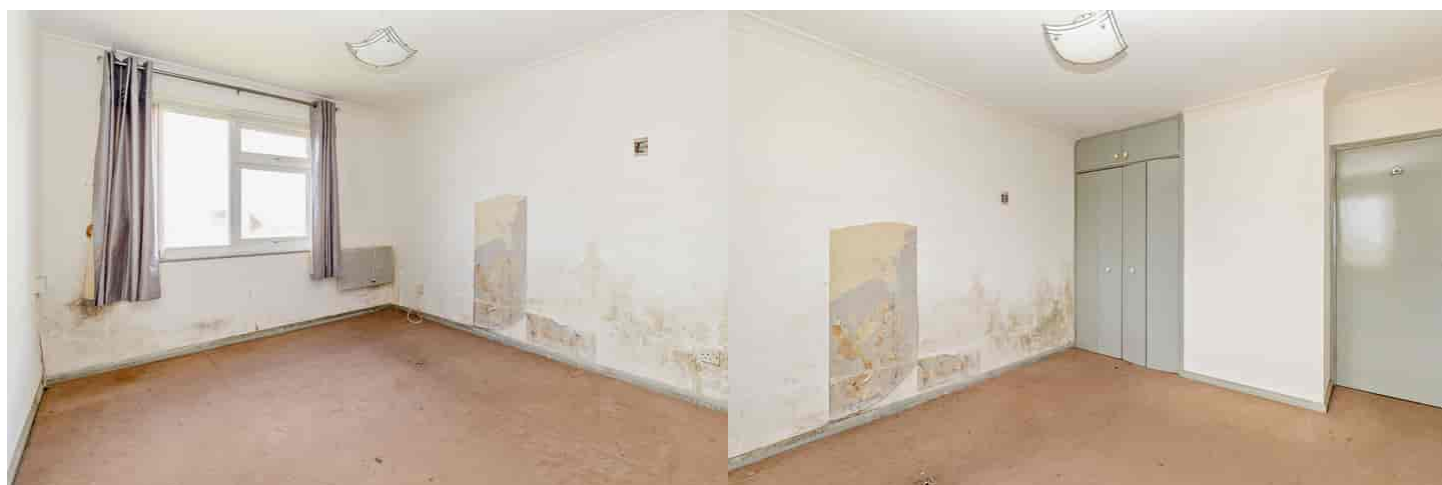
The council tax band is A.

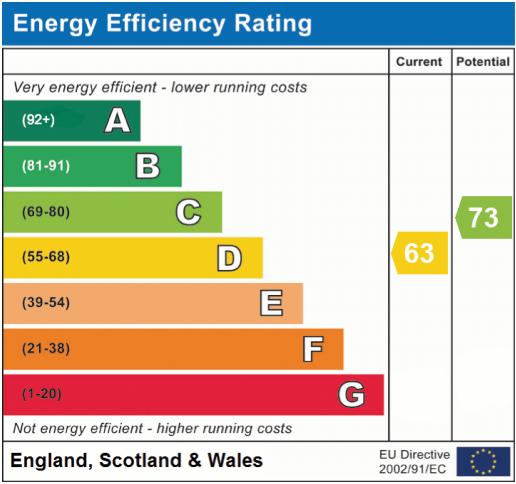
This is a leasehold property with 125 years remaining on the lease; the service charge is £65.00 per month.

The interior of this first floor flat comprises a spacious lounge, fitted kitchen, double bedroom and family bathroom. The exterior boasts communal gardens, perfect for enjoying the summer months.

Located in the popular seaside town of Blackpool, the property is close to a range of amenities, including shops, supermarkets, restaurants, pubs and close access to the Blackpool Promenade. Excellent transport links can be found from Blackpool Pleasure Beach Railway Station, a variety of local bus and tram routes and quick access to the M55.

This exciting opportunity should not be missed! All enquiries can be made through Bettermove on 0330 004 0050.









20-22 Bridge End, Leeds, LS1 4DJ  
t: 0330 004 0050 e: [hello@bettermove.co.uk](mailto:hello@bettermove.co.uk)  
[www.bettermove.co.uk](http://www.bettermove.co.uk)