



Station Road  
Dorking  
Surrey  
RH4 1HH

Offers In Excess Of £75,000

bettermove 



# Station Road

## Dorking

Bettermove are proud to present this 1 bedroom over 60's retirement flat in Dorking available with no forward chain welcoming cash buyers only.

The property benefits from double glazing, electric heating throughout and has off street parking available.

The council tax band is C.

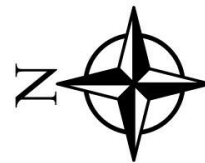
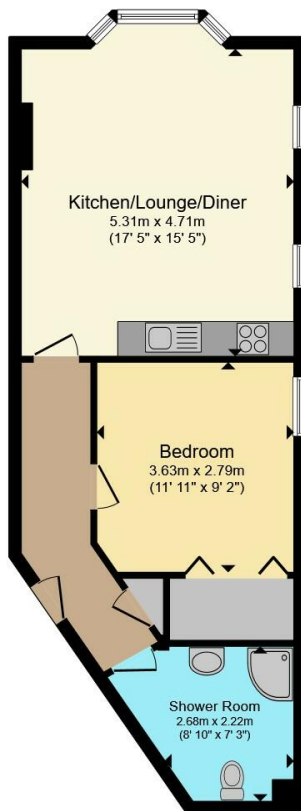
This is a leasehold property with 88 years remaining on the lease; the service charge is £350pcm.

The interior of this property comprises a spacious open plan living kitchen area, 1 bedroom and the shower room. The exterior boasts communal gardens, perfect for enjoying the summer months.

Located in the popular town of Dorking, the property is close to a range of amenities, including shops, supermarkets, restaurants and pubs. Excellent transport connections can be found from the A25, A24 and many local bus routes.

This exciting opportunity should not be missed! All enquiries can be made through Bettermove on 0330 004 0050.





Total floor area 55.7 m<sup>2</sup> (599 sq.ft.) approx

This floor plan is for illustrative purposes only. It is not drawn to scale. Any measurements, floor areas (including any total floor area), openings and orientation are approximate. No details are guaranteed, they cannot be relied upon for any purpose and they do not form part of any agreement. No liability is taken for any error, omission or misstatement. A party must rely upon its own inspection(s). Powered by [www.focalagent.com](http://www.focalagent.com)



20-22 Bridge End, Leeds, LS1 4DJ  
t: 0330 004 0050 e: [hello@bettermove.co.uk](mailto:hello@bettermove.co.uk)  
[www.bettermove.co.uk](http://www.bettermove.co.uk)