



Thurman Lodge  
Salisbury Avenue  
East Leake  
Loughborough  
Nottinghamshire  
LE12 6NW

Offers In Excess Of £128,000

bettermove

# Salisbury Avenue

## Loughborough

Bettermove are proud to present this 2 bedroom retirement flat in Loughborough available with no forward chain.

The property benefits from double glazing, gas central heating throughout and has off street parking available.

The council tax band is B.

This is a leasehold property with 125 years on the lease from 2006; the ground rent is £200pa and the service charge is £226.71pcm.

The interior of this beautifully presented property comprises a spacious living room, fitted kitchen, 2 bedrooms and the bathroom. The exterior boasts communal gardens, perfect for enjoying the summer months.

Located in the popular town of Loughborough, the property is close to a range of amenities, including shops, supermarkets, restaurants and pubs. Excellent transport connections can be found from the M1, A6 and local bus routes.

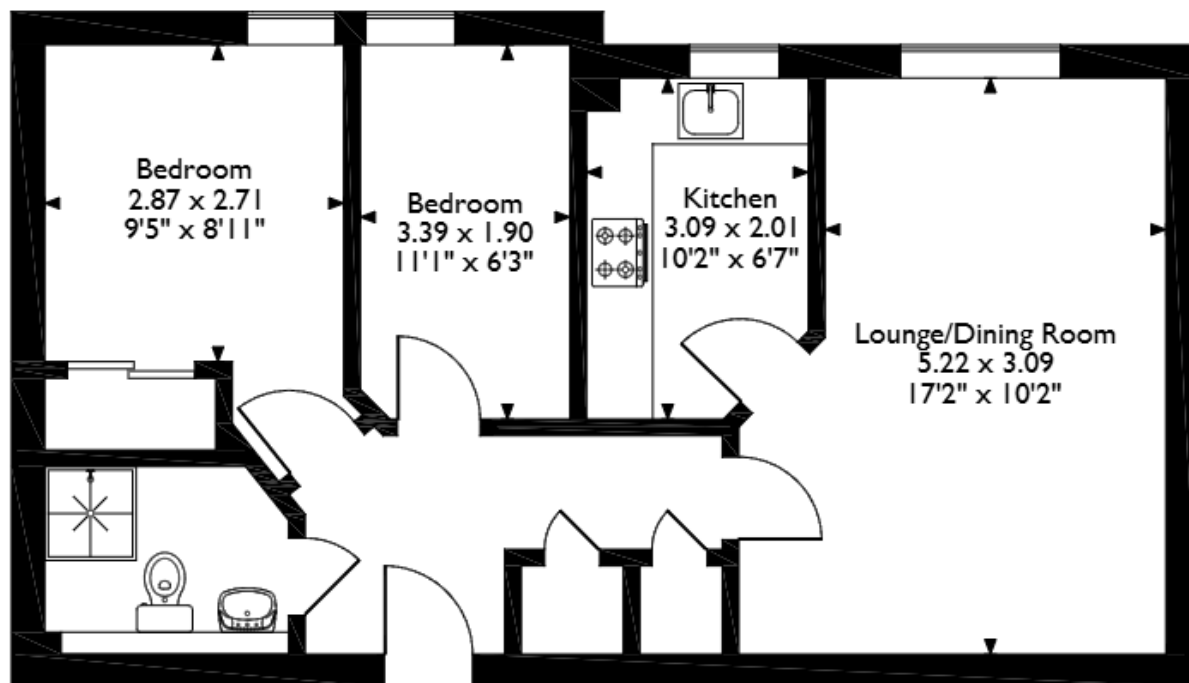
This exciting opportunity should not be missed! All enquiries can be made through Bettermove on 0330 004 0050.

-----





Thurman Lodge, Apartment Salisbury Avenue, Loughborough, Nottinghamshire  
Approximate Gross Internal Area  
54 Sq M/581 Sq Ft



Please note that the location of doors, windows and other items are approximate and this floorplan is to be used for illustrative purposes only. Unauthorized reproduction is prohibited.



20-22 Bridge End, Leeds, LS1 4DJ  
t: 0330 004 0050 e: [hello@bettermove.co.uk](mailto:hello@bettermove.co.uk)  
[www.bettermove.co.uk](http://www.bettermove.co.uk)

Please Note: These particulars, whilst believed to be accurate are set out as a general outline only for guidance and do not constitute any part of an offer or contract. Intending purchasers should not rely on them as statements of representations of fact, but must satisfy themselves by inspection or otherwise as to their accuracy. No person in this firm's employment has the authority to make or give any representation or warranty in respect of the property.